

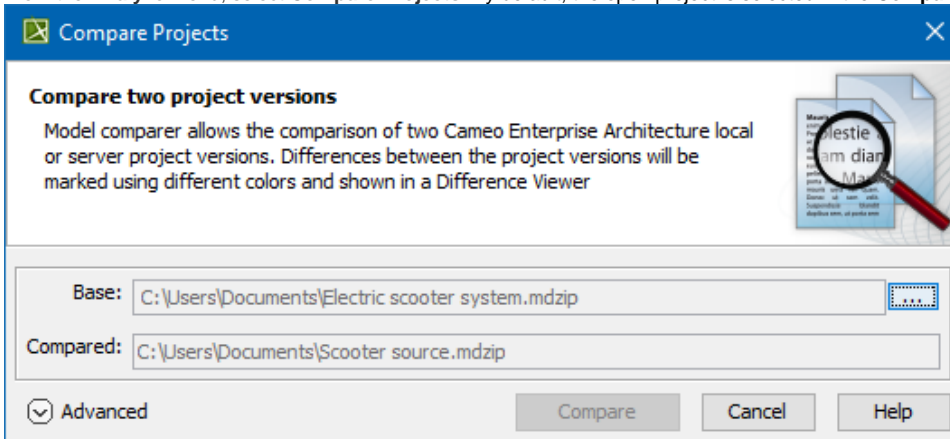
Starting Compare Projects

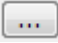

There are two methods to compare projects:


- To compare projects from the **Analyze** menu
- To start comparing projects from the **Collaborate** menu

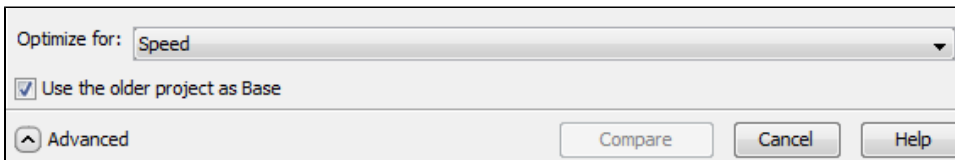
To compare projects from the **Analyze** menu

1. Open a project you want to compare.
2. From the **Analyze** menu, select **Compare Projects**. By default, the open project is selected in the **Compared** box.



3. In the **Base** box, choose a project you want to compare your open project to:
 - Click  and select a project from your file system you want to compare the current project to.
 - Click  and in the **Select Server Project** dialog, select a project version, trunk or branch you want to compare the current project to. If your compared project is also a server project, you can only choose a server project as a base.
4. Advanced **Compare projects** options:

In the same dialog, click the  **Advanced** button to see more compare options. The **Use the older project as Base** option is selected by default. This means that the project whose creation date is older is set as the Base project, while the one that was created later is set as the Compared one (i.e. the projects you indicated as the Compared and the Base might end up being swapped based on their creation date). In this case, all changes are marked as made in the Compared project. If you deselect the **Use the older project as Base** option, the Base and the Compared projects will remain as you selected them in the Compare Projects dialog.



In the **Optimize for** drop-down list, select

- **Speed**, to compare the projects faster. This is the default option and it is sufficient for most projects. Keep in mind that this option requires more memory.
- **Memory**, to compare bigger projects. Sometimes the memory required for the **Speed** compare mode exceeds the memory available for MagicDraw on your machine. In that case, switch to **Memory** mode, which conserves memory. However, this option slows the procedure down considerably.



You can also specify the **Optimize for** option in the **Environment Options** dialog. Find the option under the **Merge and Compare** category in the **General** options group.



5. Click **Compare**.

To start comparing projects from the **Collaborate** menu

1. Log in to Teamwork Cloud server.



To compare project versions in the Teamwork Cloud environment, you are required to have a **Read Resources** [permission](#) for every used project in compared versions.

2. On the main menu, click **Collaborate**, then select either:
 - **Projects** – the **Manage Projects** dialog opens
 - **Open Server Project** – the **Open Server Project** dialog opens
3. Select the project you want to compare, then click the **Project History** button  in the toolbar above project selection list.
4. While holding down Ctrl (or ) , select the two versions of the server project you want to compare.
5. Click **Compare**.