

Logging in to 3DEXPERIENCE platform

On this page

- [Switching platform/credentials](#)
- [Logging out](#)
- [Launching modeling tool from 3DEXPERIENCE platform](#)

The **3DEXPERIENCE** menu groups all available integrations with the **3DEXPERIENCE** platform. For some functionalities to work, you need to log in to the **3DEXPERIENCE** platform as described below. You can log in to the platform deployed either on-premises or on the cloud server.

Please note:

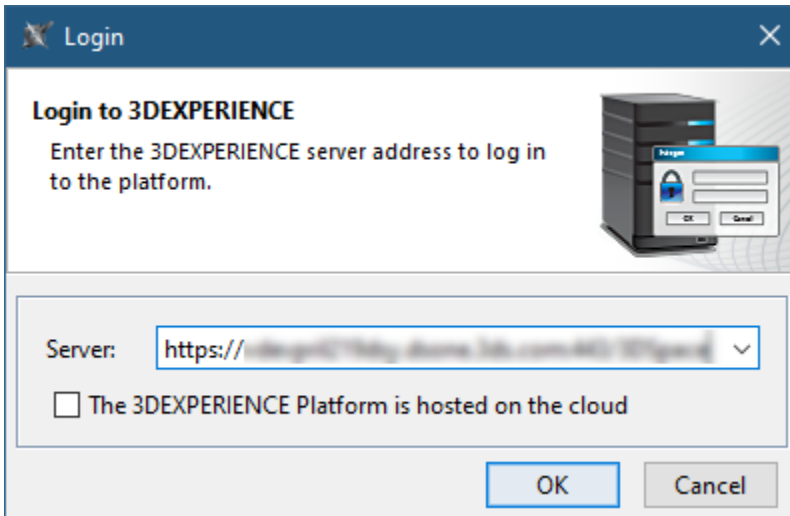
- To avoid connection issues related to the certificates that are not trusted, we recommend installing a self-signed certificate to JRE. For the

solution, refer to [Connection issues when the certificate is not trusted](#).

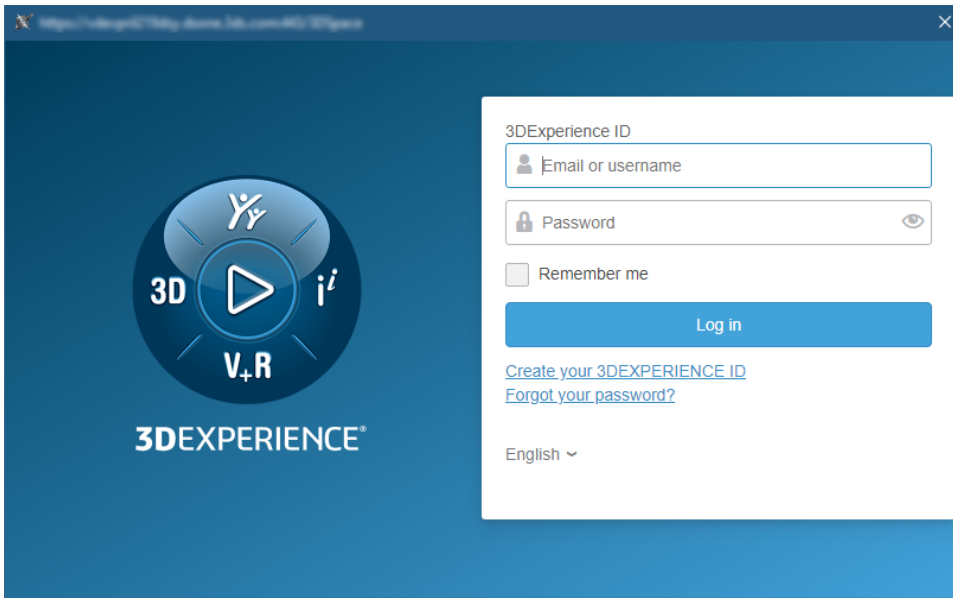
To log in to the **3DEXPERIENCE** platform from the modeling tool

- If you are launching a modeling tool from **3DEXPERIENCE** platform, you are logged in automatically.

1. In the main menu, select **3DEXPERIENCE > Login**.
2. In the **Server** box of the open dialog, enter the server address. If the **3DEXPERIENCE** platform is deployed on the cloud, select the **The 3DEXPERIENCE platform is hosted on the cloud** check box.



3. Click **OK**.
4. In the respective boxes of the open dialog, enter your **3DEXPERIENCE** username and password.



5. Click **Log in**.

Once you log in to the **3DEXPERIENCE** platform, you can use all the functionalities of the installed plugins without canceling the session.

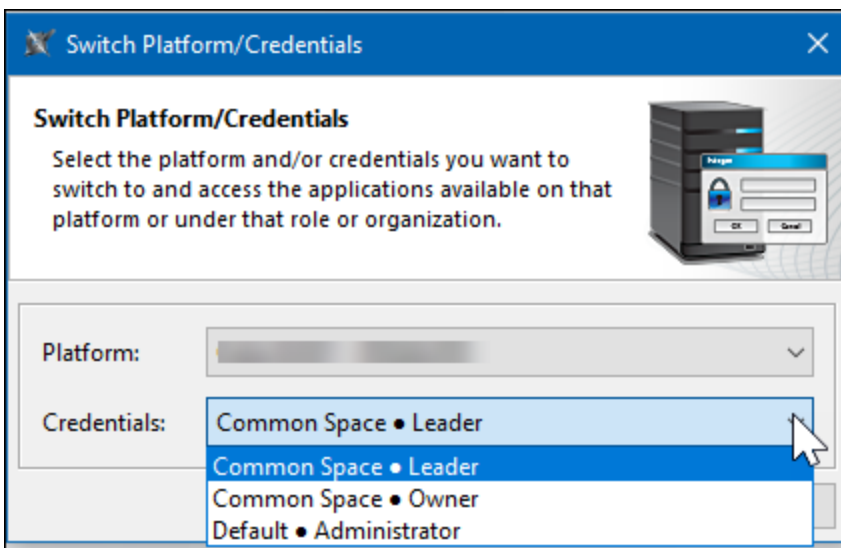
When logging in to the cloud-based **3DEXPERIENCE** platform, make sure you have all the required roles and/or licenses to use the platform and its applications. If you do not have the necessary roles and/or licenses, you will get the notification suggesting you to choose a different platform. If you still encounter login issues, contact the person responsible for the role and license configuration.

Switching platform/credentials

Once you log in to the **3DEXPERIENCE** platform, you can switch to a different platform, the platform's collaborative space, or a different access role without terminating your session.

To switch to a different **3DEXPERIENCE** platform/credentials

1. In the main menu, select **3DEXPERIENCE > Switch Platform/Credentials**.
2. In the **Switch Platform/Credentials** dialog, select the platform and/or credentials you want to switch to and click **OK**.




The **Switch Platform/Credentials** drop-down lists display only the platforms, collaborative spaces, and roles you can access. Platforms show **Logging out** in the first drop-down list, while the spaces and credentials are displayed in the following format: Collaborative Space • Access Role. When you finish working on a project in the **3DEXPERIENCE** platform, you can terminate your session by logging out of the platform.

To log out of the **3DEXPERIENCE** platform

- In the main menu, select **3DEXPERIENCE > Logout**.

Launching modeling tool from 3DEXPERIENCE platform

To launch a modeling tool from **3DEXPERIENCE** platform

1. Log in to **3DEXPERIENCE** platform with your **3DEXPERIENCE** username and password.
2. Click the **Compass** icon  in the upper left corner.
3. Select **Design with CATIA Magic**.
4. The tool launches and you are automatically logged in to the platform.