

# Adding standard profiles to server


We recommend adding standard profiles to a public collaborative space that everyone can access.

If you try to add a project that requires a standard profile that does not exist on the server yet, the standard profile will be automatically imported to the server as well. We highly recommend moving such standard profiles to a collaborative space dedicated to standard profiles.

## Creating public collaborative space

We recommend that administrators responsible for managing MBSE in the platform create a new public collaborative space. This space should be viewable by all users, but only editable by the administrator.

To create a public collaborative space

1. In the platform, click the **Compass** icon  and locate **Collaborative Spaces Control Center** under **My Apps**.
2. Click **Create Collaborative Space**.
3. In the dialog that opens, enter the owner's name (if it's different from the current user), the title (mandatory), and a description of the collaborative space.
4. Choose Family: **Design** and Visibility: **Public**.

### Create Collaborative Space

Main Owner

(Enter a name if different)

Title \*

MBSE Standard Profiles

Description

Enter description...

Family

Design - Collaborative storage to manage any kind of

▼

Visibility

Public - Content visible to all users

▼

Create

Cancel

5. Click **Create**.

## Importing profiles to server

Once the collaborative space is created, users can import profiles to the server.

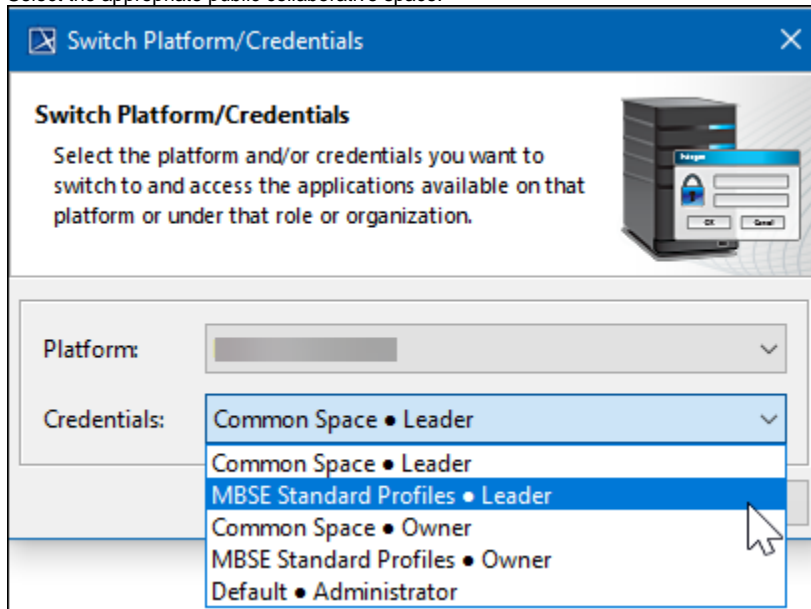
To import profiles to the server

1. [Enable 3DEXPERIENCE collaboration](#) in a modeling tool.



Members of the same team should use an installation of a modeling tool complete with the same plugins.

2. Log in to the same platform that the collaborative space was created in.
3. Change your credentials to the public collaborative space dedicated to standard profiles:
  - a. Select **3DEXPERIENCE > Switch Platform/Credentials**.
  - b. Select the appropriate public collaborative space:



- c. Click **OK**.
4. Import profiles by selecting **3DEXPERIENCE > Add Profiles to Server...**

Standard profiles are added to a public collaborative space that everyone can access. Every time a project is created, it will use standard profiles from the platform.

If a profile is not added, you can always add it as a standalone project.