

# Creating and displaying derived properties

You need to create derived properties to display the information indirectly related to an element. A property whose values are calculated is called a derived property.

You can [create](#), [edit](#), or [delete](#) derived properties in the:

- Element Specification window
- Table

You can manage derived properties using the **Expression** dialog.

To create a new derived property

1. Open the **Expression** dialog by doing one of the following:
  - In the selected element's Specification window, select the **Traceability** property group and click the **Create** button.
  - In the table toolbar, click **Show Columns** and select **New Derived Property**.
2. In the **Expression** dialog, specify the name and expression for the derived property.
3. Click **OK**.



If you want to create a derived property with a result other than an element, you must manually change the derived property type.

To edit a derived property

1. Do one of the following:
  - In the selected element Specification window, select the **Traceability** property group, select a derived property you want to edit, and click the **Edit** button.
  - In the active table, right-click the derived property column heading and select **Edit Derived Property**.
2. In the **Expression** dialog make changes and click **OK**.

To remove a derived property

1. Do one of the following:
  - In the selected element Specification window, select the **Traceability** property group, choose the derived property you want to remove, and click the **Delete** button.
  - In the active table, right-click the derived property column heading and select **Remove Derived Property**.

While working with your models, sometimes in the same diagram or table, you need to see information that is not directly related to an element. You can display that information in the following ways:

- [In the Note](#)
- [In the table](#) (as a new column)

To display derived properties on a Note shape

1. Create a Note for the selected element or select an existing one.
2. Do one of the following:
  - Select a Note and click the **Edit Element Properties** smart manipulator. The **Compartment Edit** dialog opens.
  - Right-click the Note shape and select **Edit Compartment**. The **Compartment Edit** dialog opens. Choose the **Element Properties** tab.
3. In the **Hidden** list, move the properties you want to display on a Note shape to the **Selected** list by doing one of the following:
  - Select one or more properties and click the **>** or **>>** button.
  - Double-click to select properties one by one.
4. Click **OK**.  
Selected derived properties are displayed in the Note.

To display derived properties in a table

1. On the table toolbar, click the **Show Columns** button and select **Select Columns**.
2. In the opened **Select Columns** dialog, select the properties you want to display.
3. Click **OK**, when you are done.

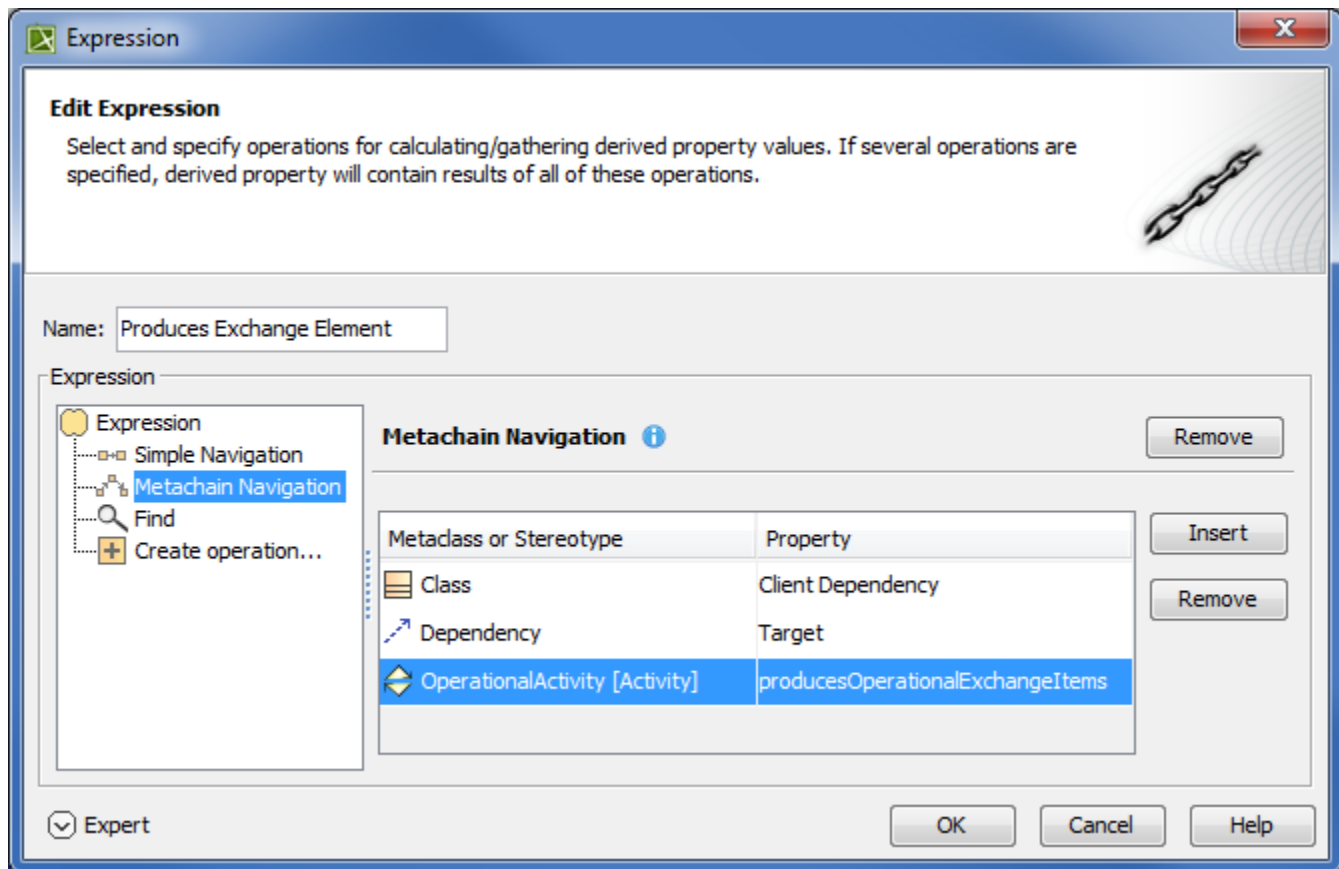
## Case Study

Let's say, we need to show *Warning Order* and *Medical Condition* exchange elements produced and consumed by the performer *Search Node*. Exchange elements are information indirectly related to the *Search Node* element.

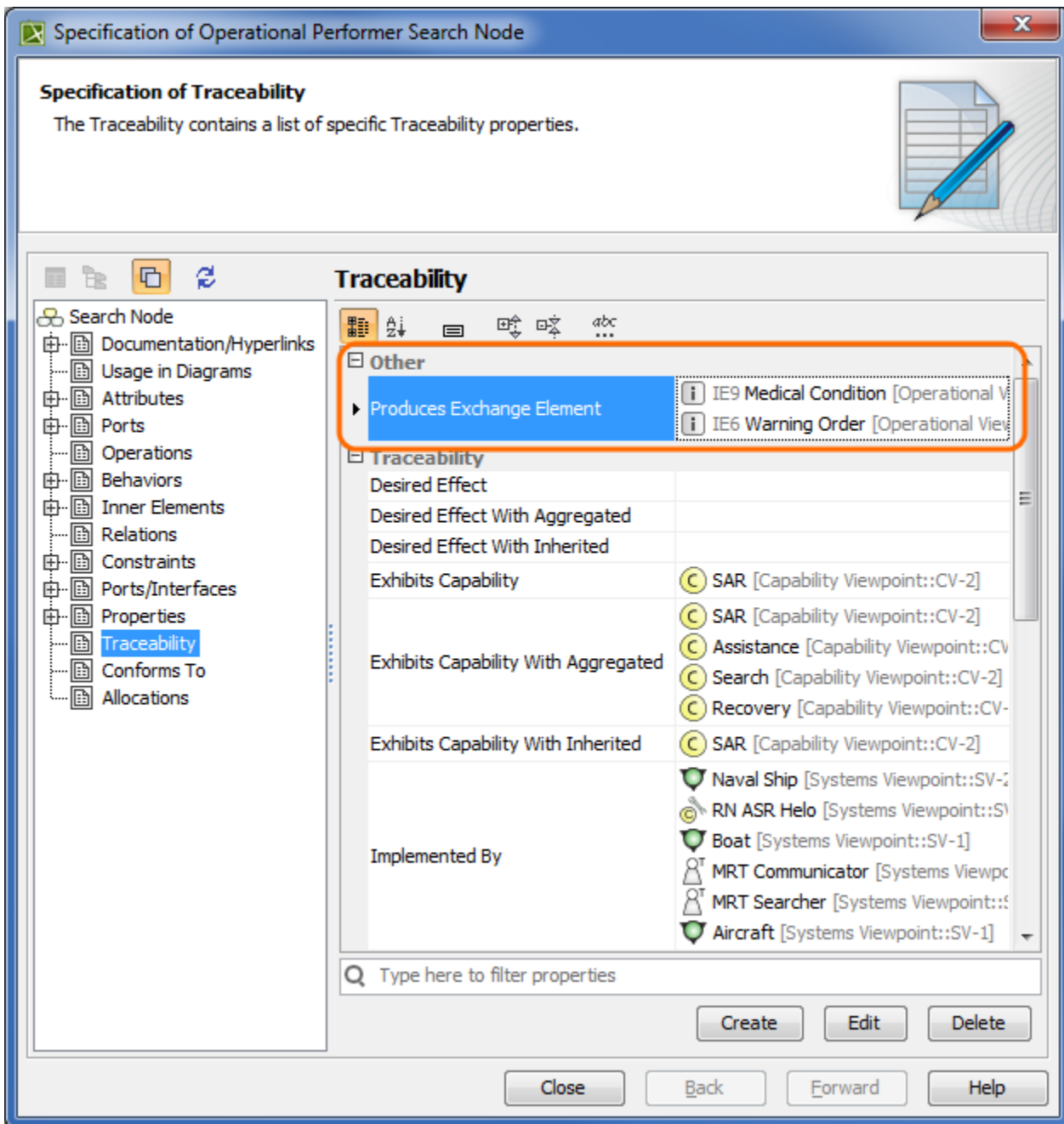
We will analyze the OV-2 diagram from the DoDAF sample project.

First, we will show the exchange elements produced by the *Search Node*.

Let's create the **Produces Exchange Element** derived property for the Operational Performer *Search Node*. Open the *Search Node* Specification window, and in the **Traceability** property group, click the **Create** button. In the **Expression** dialog, select the **Metachain Navigation** property group. Then specify the derived property name and the meta chain expression as shown in the following figure.



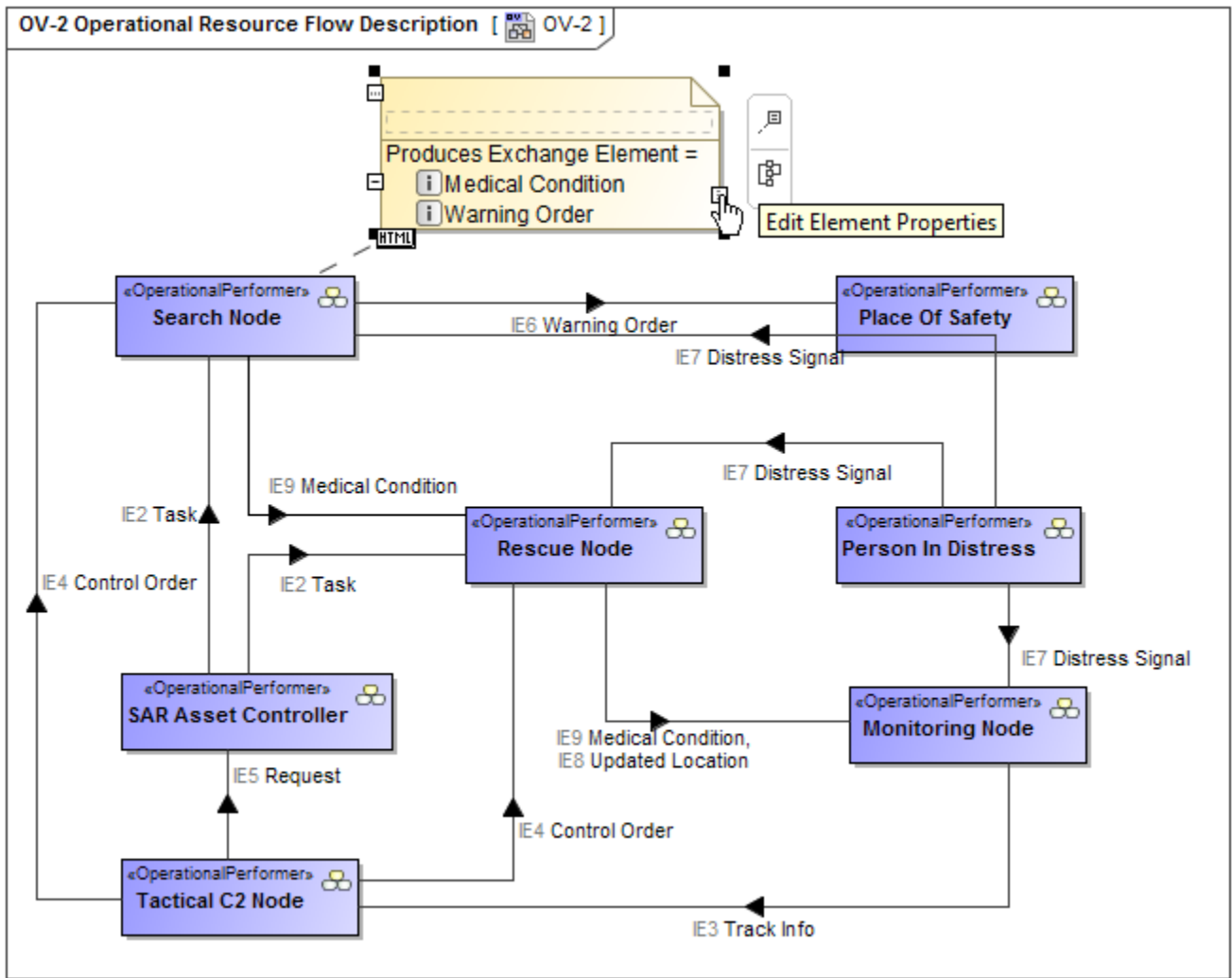
The following figure shows that a new subgroup named **Other** is created in the Operational Performer Specification window. Our created **Produces Exchange Element** derived property is placed under this subgroup. The **Produces Exchange Element** derived property has *Warning Order* and *Medical Condition* exchange elements as its values.



Next, we need to display values of the **Produces Exchange Element** derived property for the *Operational Performer Search Node* in the OV-2 diagram.

**i** A derived property is applicable to an element type, not the specific element. In this particular example, our created derived properties are applicable to all Operational Performers, not only to *Search Node*.

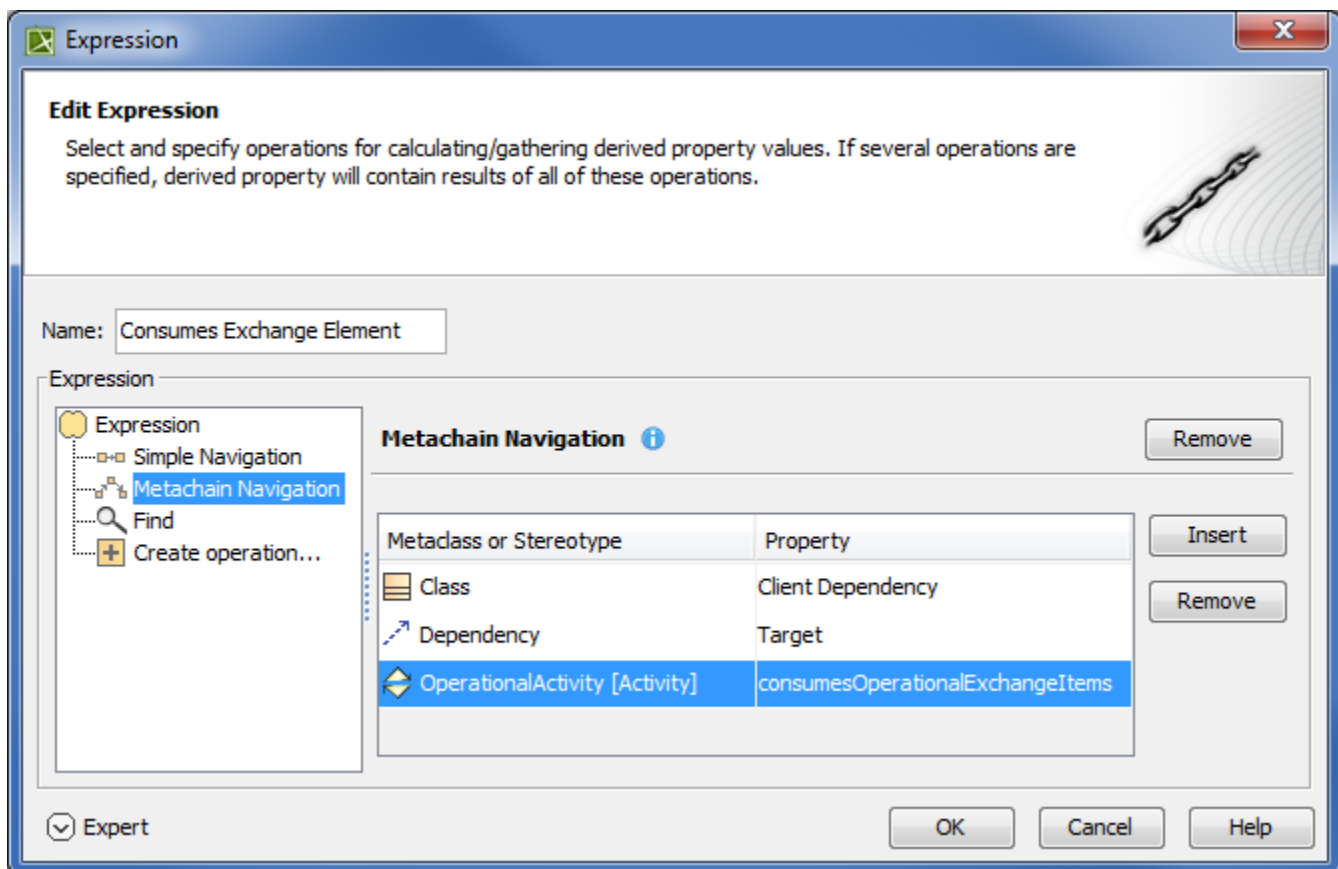
We can use a Note element wherein we can display information indirectly related to the Search Node. Let's create a Note and connect it to the Operational Performer *Search Node*. Then click **Edit Element Properties**. In the **Compartment Edit** dialog, select the **Element Properties** tab. From the properties list, select to display the Produces Exchange Element property. After clicking the **OK** button, Warning Order and Medical Condition exchange elements are displayed in the Note.



Now, let's create a generic table wherein we can also display information indirectly related to the *Search Node* as well as to other Operational Performers. For that purpose, we select Operational Performer as an **Element Type** and add existing Operational Performers to the table. Then we select which information to display as new columns. Previously created **Produces Exchange Element** derived property can be added as a new column through the **Show Columns** menu.

#	Name	Performs Operational Activity	Produces Exchange Element
1	Search Node	Find Victim Receive Distress Signal Monitor Health Send Warning Order Search	IE9 Medical Condition IE6 Warning Order
2	SAR Concept		
3	Person In Distress	Send Distress Signal	IE7 Distress Signal
4	Rescue Node	Receive Distress Signal Provide Medical Assistance Recover Victim Rescue	IE9 Medical Condition IE8 Updated Location

Now, let's create a new derived property directly in the generic table. This property will show which exchange elements are consumed by the performer element. We can do that using the same **Expression** dialog and doing the same actions as described previously. The following figure is an example of the **Consumes Exchange Element** derived property expression.



When the expression is specified, the newly created derived property is displayed as a new column.

#	Name	Performs Operational Activity	Produces Exchange Element	Consumes Exchange Element
1	Search Node	Find Victim Receive Distress Signal Monitor Health Send Warning Order Search	IE9 Medical Condition IE6 Warning Order	IE7 Distress Signal
2	SAR Concept			
3	Person In Distress	Send Distress Signal	IE7 Distress Signal	
4	Rescue Node	Receive Distress Signal Provide Medical Assistance Recover Victim Rescue	IE9 Medical Condition IE8 Updated Location	IE7 Distress Signal IE9 Medical Condition