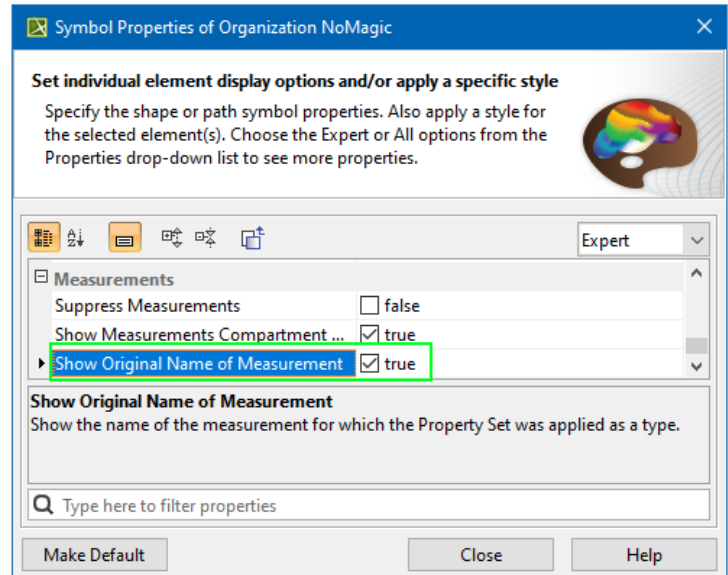
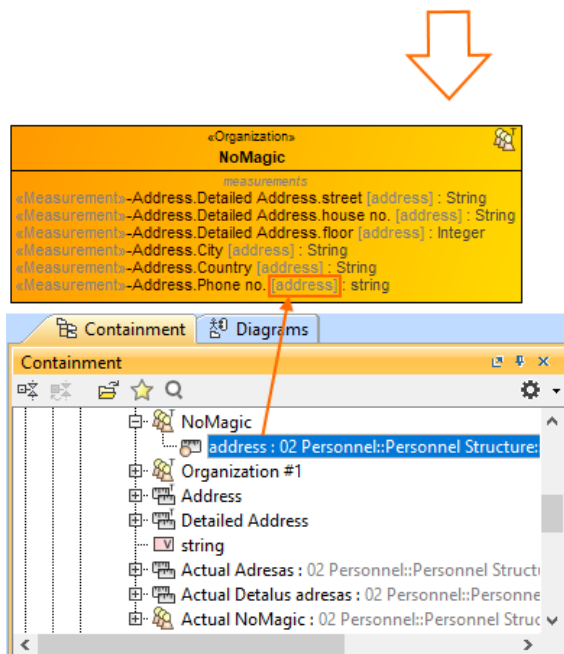
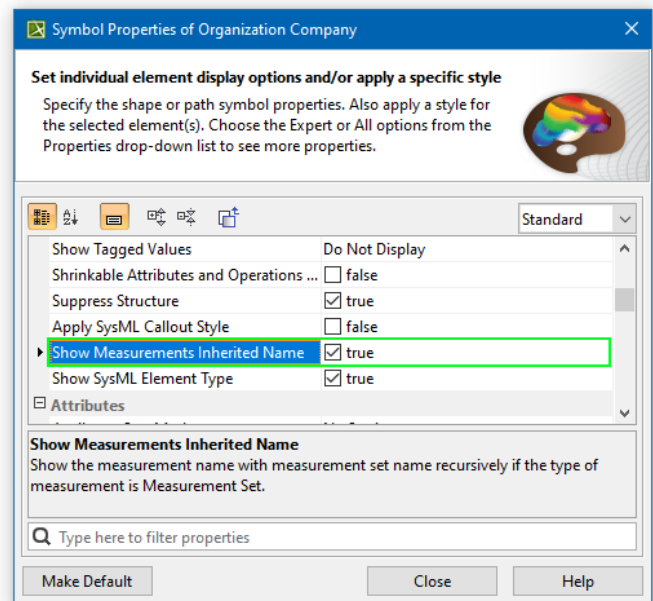
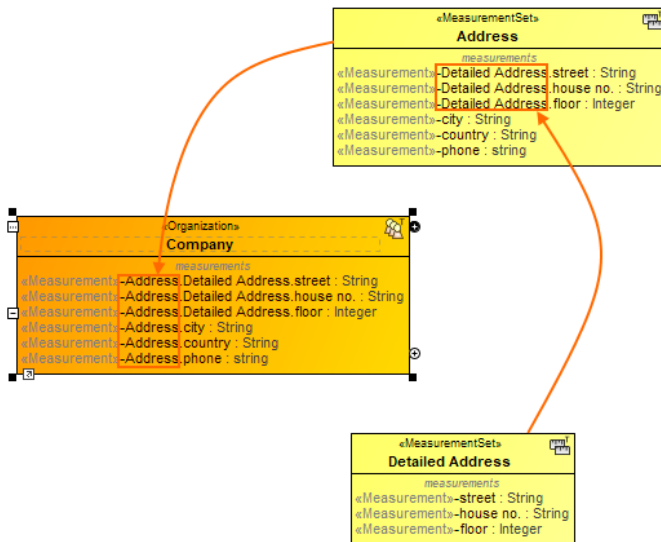


# Measurements

A measurement is a property of an element representing something in the physical world, expressed in amounts of a unit of measure. You can create measurements either in the measurements table or on the element shape in the diagram.

Note, that when you display the measurements in the measurements compartment, you can choose to show the inherited names through the dot notation when the Property Set is applied as a type. In this case, the original name of the measurements will no longer be shown. However, if you need to see the original name, set the **Show Original Name of Measurement** symbol property to true. The original name will be displayed in brackets and in gray font (see the image below).



Learn more about working with measurements:

- [Managing Measurement Sets and Actual Measurements](#)
- [Working with Typical Measurements table](#)
- [Working with hierarchical Typical Measurements table](#)
- [Working with hierarchical Actual Measurements table](#)
- [Creating Actual Measurements table](#)
- [Generating an Actual Measurements table from a Typical Measurements table](#)
- [Property Set elements for measurement tables](#)

