

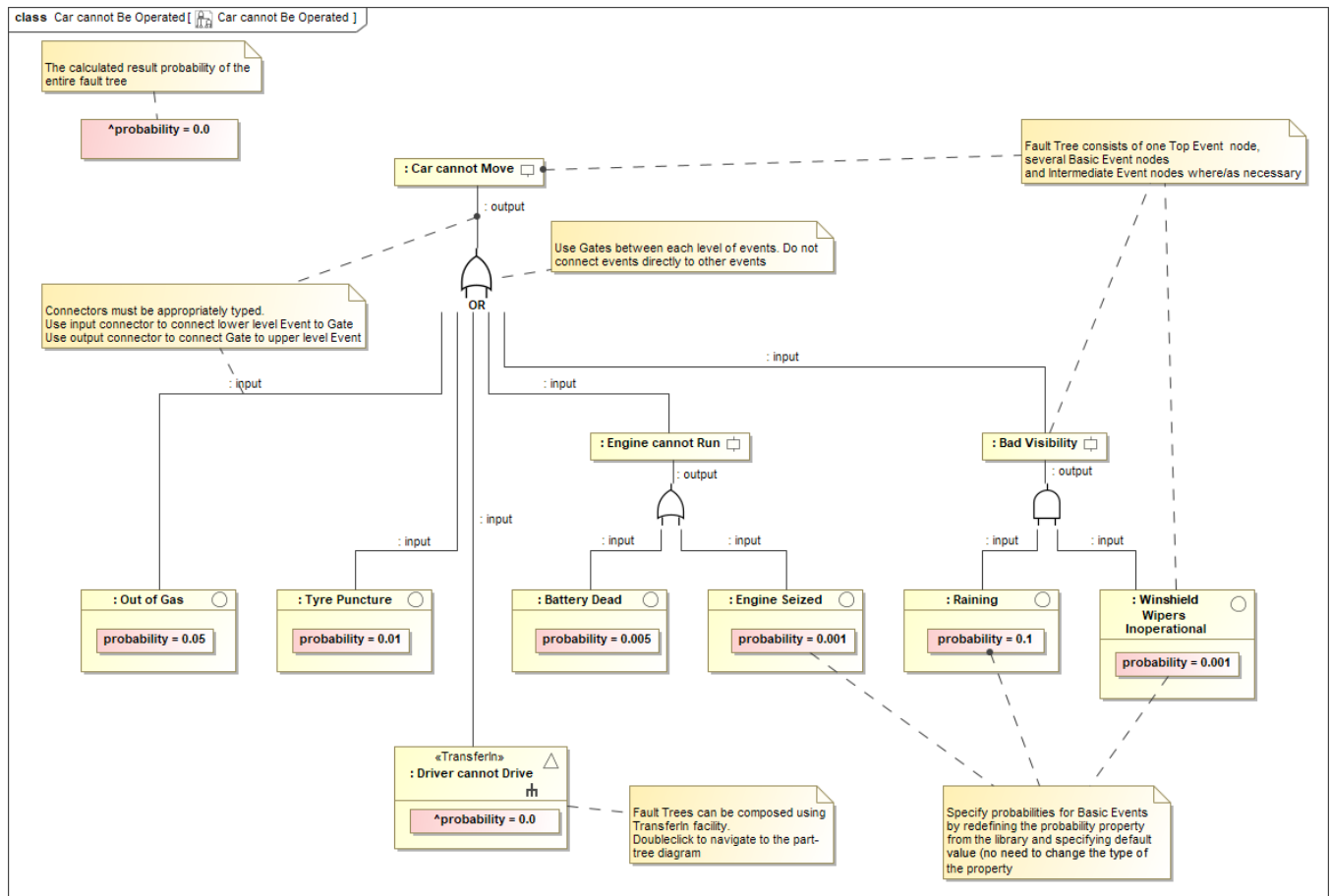
# 2022x Refresh2 Version News

## Cameo Safety and Reliability Analyzer

Released on: July 7, 2023

### Fault Tree Analysis

A new plugin has been introduced which is used in safety and reliability engineering to understand how systems can fail or what is the cause of system failure. The Fault Tree Analysis plugin lets you create a Fault Tree Analysis diagram with the help of different types of events and gates. The Fault Tree Analysis diagram is based on the UML Composite Structure Diagram and follows the Risk Analysis and Assessment Modeling Language (RAAML) methods. You can also interconnect the Fault Tree Analysis diagram with the System Model.



Fault Tree Analysis diagram.

### Documentation

- [Cameo Safety and Reliability Analyzer Documentation](#)

### News of earlier versions

- [Cameo Safety and Reliability Analyzer 2022x Refresh1](#)
- [Cameo Safety and Reliability Analyzer 2022x](#)
- [Cameo Safety and Reliability Analyzer 2021x Refresh2](#)
- [Cameo Safety and Reliability Analyzer 2021x Refresh1](#)
- [Cameo Safety and Reliability Analyzer 2021x](#)
- [Cameo Safety and Reliability Analyzer 19.0 SP4](#)
- [Cameo Safety and Reliability Analyzer 19.0 SP3](#)
- [Cameo Safety and Reliability Analyzer 19.0 LTR SP2](#)
- [Cameo Safety and Reliability Analyzer 19.0 LTR SP1](#)
- [Cameo Safety and Reliability Analyzer 19.0 LTR](#)