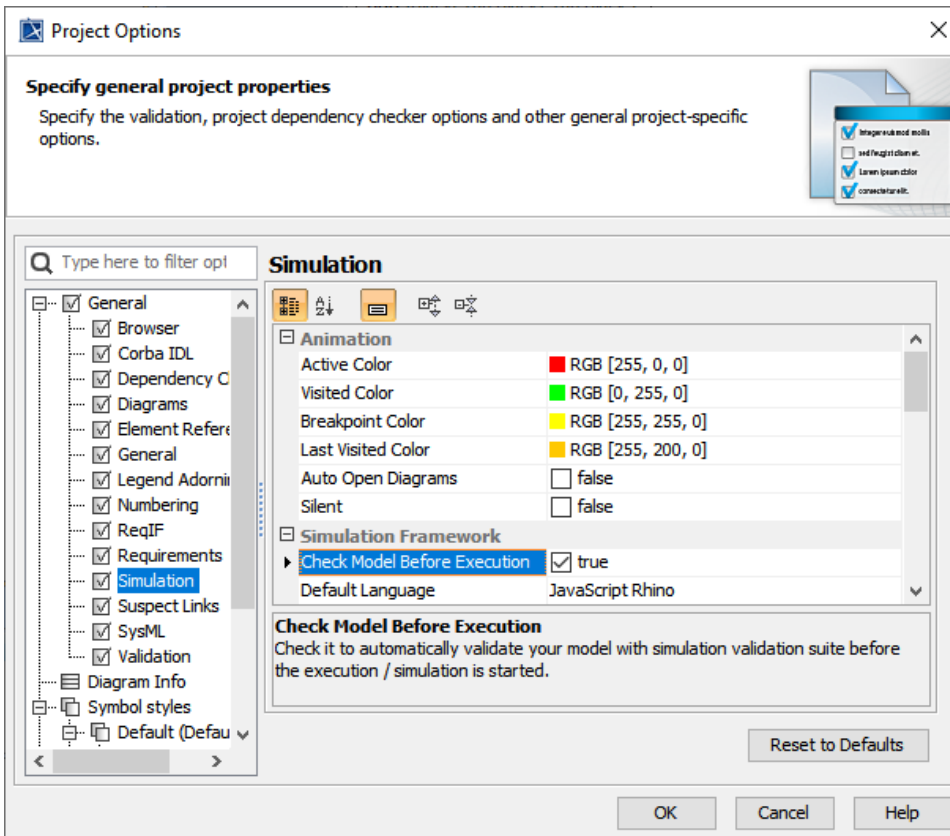


# Validation and verification

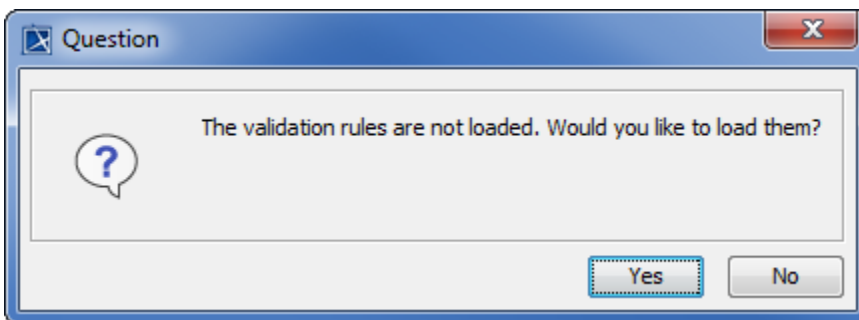
Before executing UML or SysML model, you need to make sure that it has been correctly modeled, or you can use the Cameo Simulation Toolkit's validation feature to help you validate the model against a set of validation rules before executing it.

To validate a model

1. From the main menu, click **Project > Options** to open the model validation option in the [Project Options](#) dialog.
2. On the left pane, click **General > Simulation**.
3. In the **Simulation Framework** group, select the **Check Model Before Execution** option.



4. Click **OK**.
5. Simulate your model. A dialog will open, asking whether you want to load the required profiles that contain the validation rules to validate your model (if your project does not contain the required validation rules).



6. Click **Yes** to load the validation rules and validate the model before the simulation or **No** to simulate the model without validating it.

## Related page

- [Project options](#)