

Timeline chart

On this page

- [Properties of the Timeline Chart](#)
- [Using a Timeline Chart](#)
- [Reordering Timeline Chart values](#)
- [Showing the duration of empty/dummy Actions as duration constraints](#)
- [Exporting a Timeline Chart](#)
- [Representing Time Series Charts in a Timeline Chart](#)
- [Glossary](#)
- [Sample model](#)

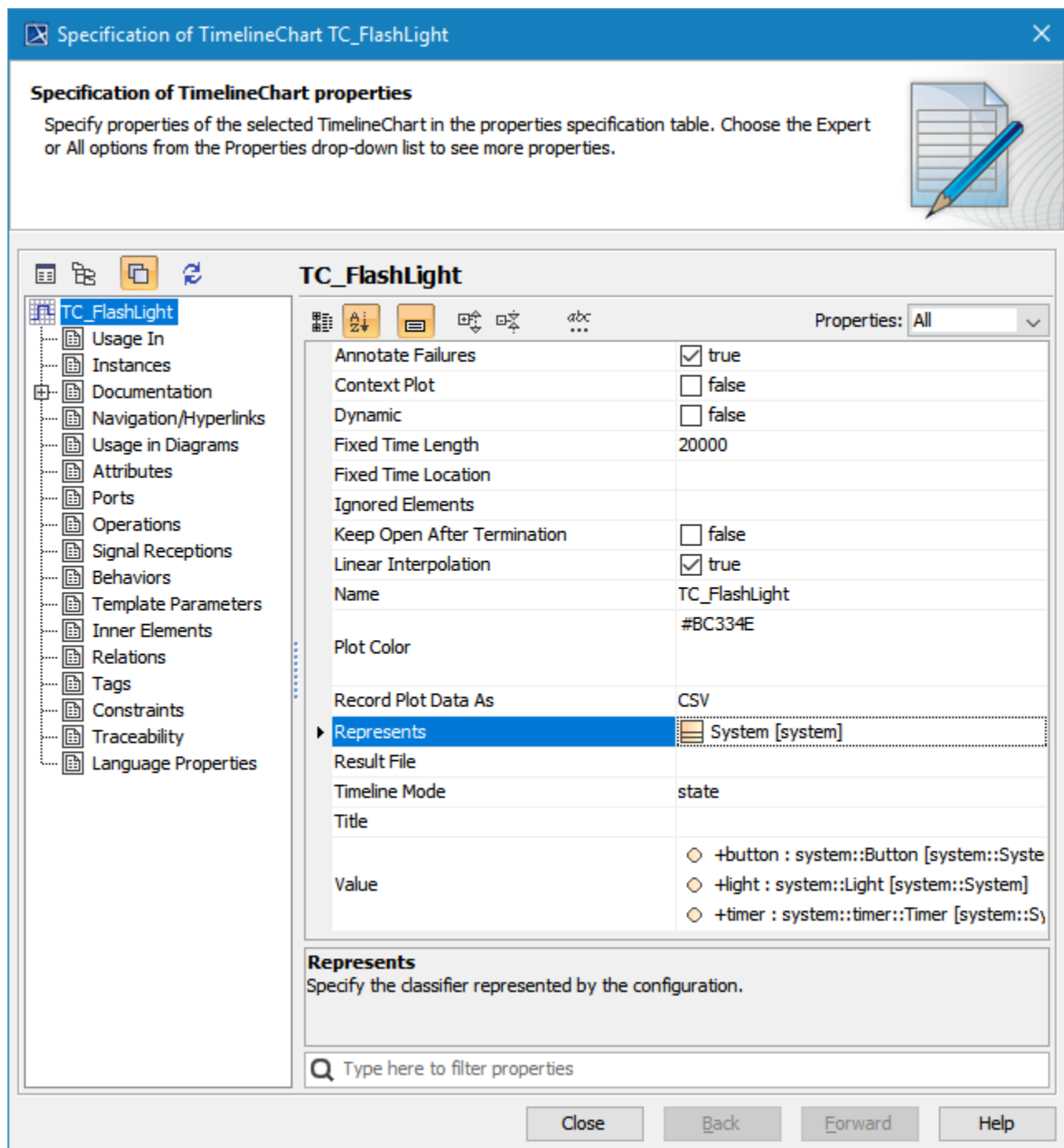
Unlike a [Time Series chart](#), a Timeline chart allows you to see the active States of an object or a property during simulation or the Activities simulated in an object. The Timeline plot allows you to see the animation of all active States while a model simulation is running, as well as which objects are active in each State or when a State starts and ends.

Similar to the Time series chart, the Timeline chart also shows the x-axis and y-axis. If a Timeline chart represents an Activity, the x-axis of the chart shows time and the y-axis shows Call Behavior Action, Activity, Call Operation Action, and Operation names. If a Timeline chart represents a State, the x-axis of the chart shows time and the y-axis shows object State names in different values. Timeline charts identify the changes in object States or executed Activities and plot them along a timeline. The States are grouped by region. Magic Model Analyst records changes in the active States or Activities and allows you to export them to a CSV or TSV file. You can then import the CSV file into an Excel file and analyze the exported Timeline chart, e.g., calculate the simulation duration, see what object is in a particular State, and how long it is busy or idle.

We use the sample project [FlashingLight.mdzip](#) throughout this section to demonstrate how to use a Timeline chart in your model.

Properties of the Timeline Chart

The Magic Model Analyst's Timeline chart can also serve as a predefined subtype of a [UI Config](#). You can use it as a UI mockup of the SimulationConfig element just like an ImageSwitcher. The Specification window of the Timeline chart is shown below:



The properties of Timeline chart in the Specification window.

You can change the Timeline chart's display by modifying its properties, as shown in the following table.

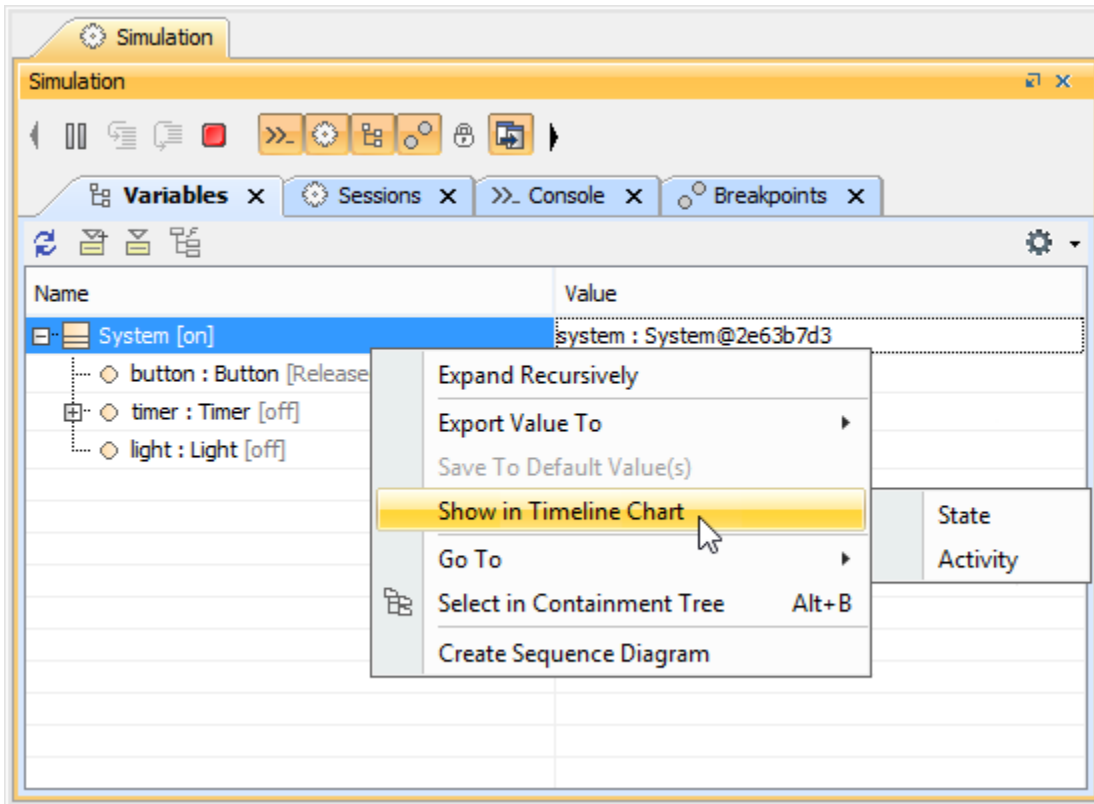
Property	Function
Annotate Failures	To annotate a Requirement and constraint failures as the chart plot area in red (true by default).
Context Plot	To show or hide a context plot.
Dynamic	If true, the chart shows only States or Actions actually used and sorted by occurrence. Otherwise, the list of static Behaviors is shown, and the chart contains information when open.

Fixed Time Length	To specify a fixed range of the time axis in a Timeline chart in milliseconds. If you specify a value, the time axis range will be fixed to that particular value. If you do not specify the value of the Fixed Time Location, the plot(s) will move to the left if the time range is greater than the maximum value of the time axis. A fixed time length unit is specified by a time unit tag definition of the Simulation Config. If you do not specify the time unit, Magic Model Analyst uses 20,000 milliseconds as the default unit.
Fixed Time Location	To specify the start time of the time axis in a Timeline chart. If you specify a value for the Fixed Time Length but leave the Fixed Time Location value empty, the Timeline chart will work like an oscilloscope. The plot(s) will move to the left. A fixed time location unit is specified by a time unit tag definition of the Simulation Config. If you do not specify the time unit, Magic Model Analyst uses the millisecond as the default unit.
Ignored Elements	A list of elements (States, Actions, and Activities) which will be ignored and not displayed in the Timeline chart. This list takes priority over the Value list.
Keep Open After Termination	To keep the Timeline chart open after the termination of the simulation.
Linear Interpolation	If true, the plot will connect 2 dots in a non-rectangular line at a time.
Plot Color	To specify a plot color.
Record Plot Data As	To specify the selected format of the file to be saved if Result File is specified.
Result File	To specify the file name to be saved from the results in the selected file format specified in the Record Plot Data As property. Otherwise, the results will be saved into model elements.
Timeline Mode	To select whether to show the Timeline of a State or an Activity.
Title	To specify the title of a Timeline Chart.


Using a Timeline Chart

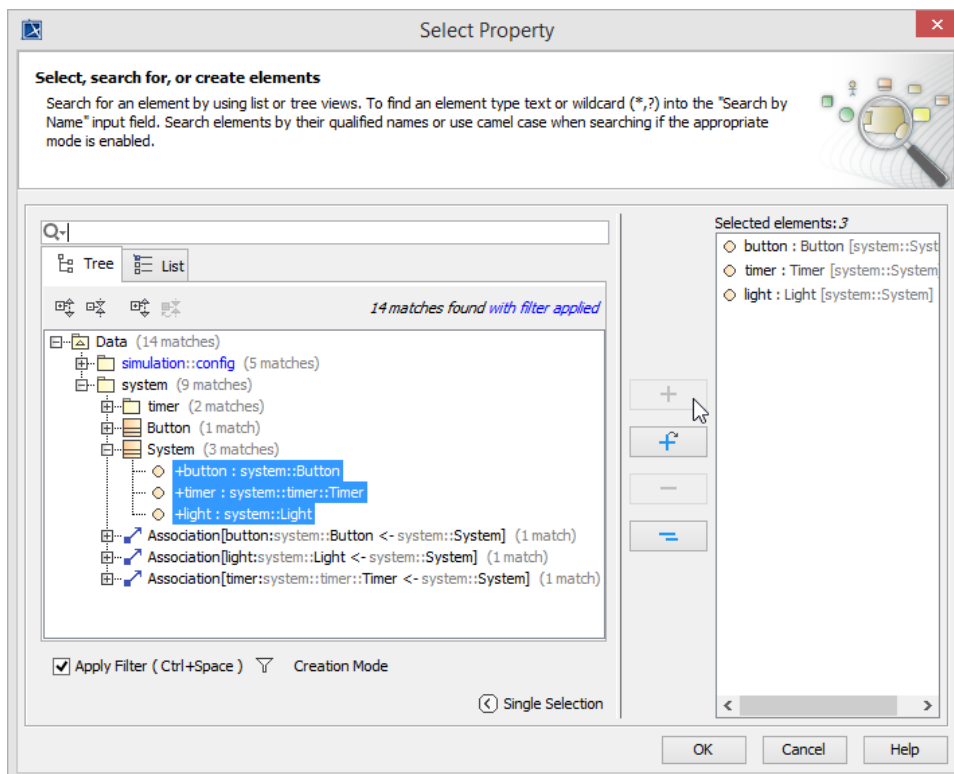
To display a Timeline chart

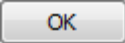
1. Open the shortcut menu of the **Variables** pane in the Simulation window.
2. Right-click the row of a runtime value you want to show on the Timeline chart and select **Show in Timeline Chart > State** or **Activity**. This example uses **State**.

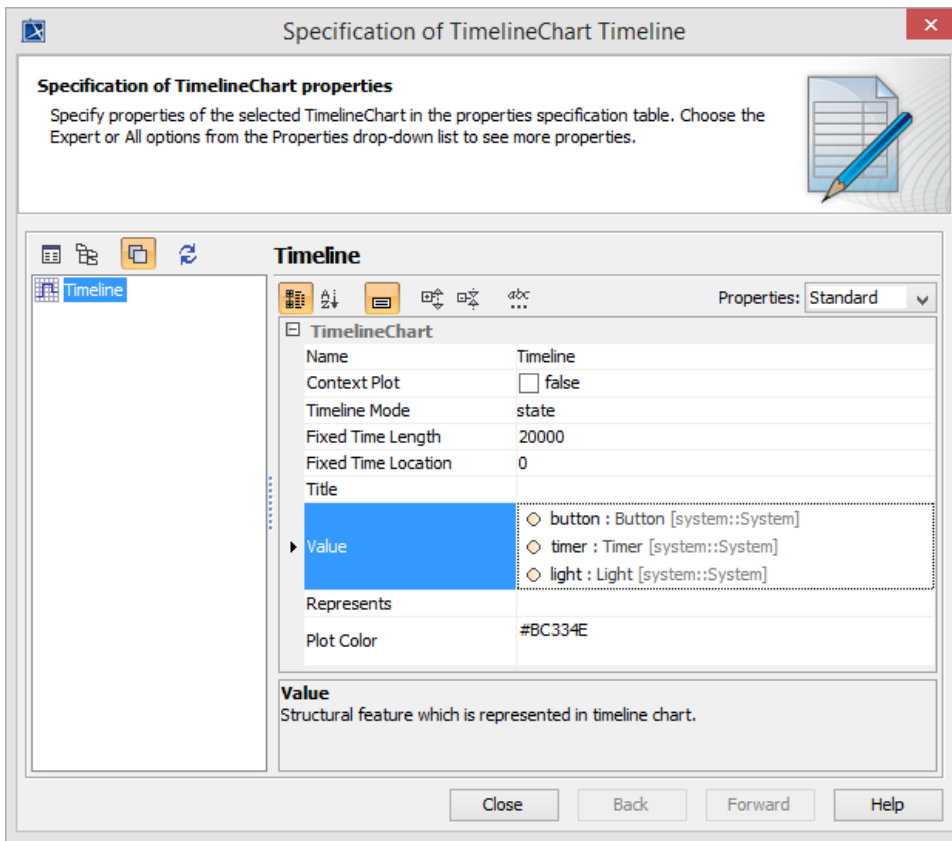




To use a Timeline chart

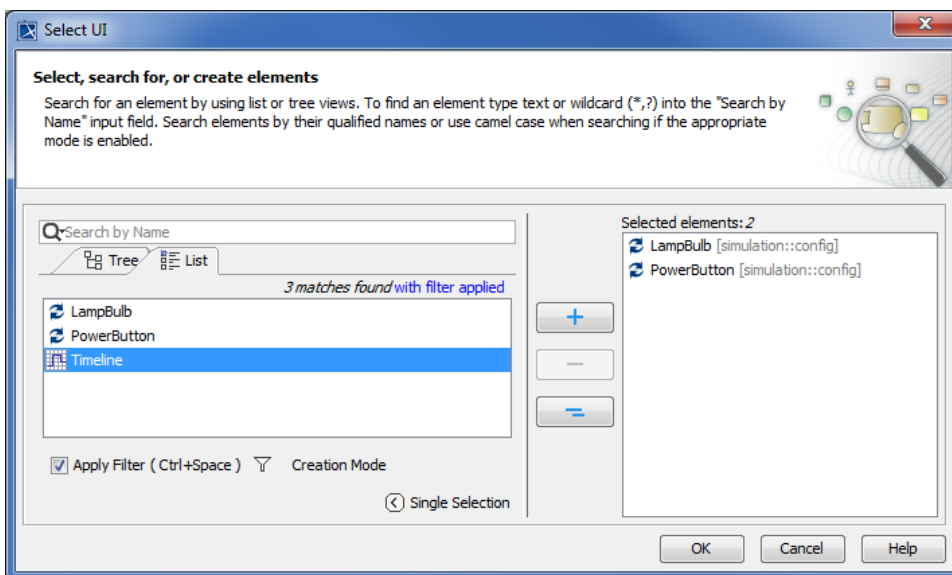
1. Create a Timeline chart element to represent a Classifier.
2. Open its Specification window and click  next to the **Value** property to select the elements/values to be monitored in the Timeline Chart. The **Select Nested Properties** dialog opens.

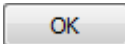


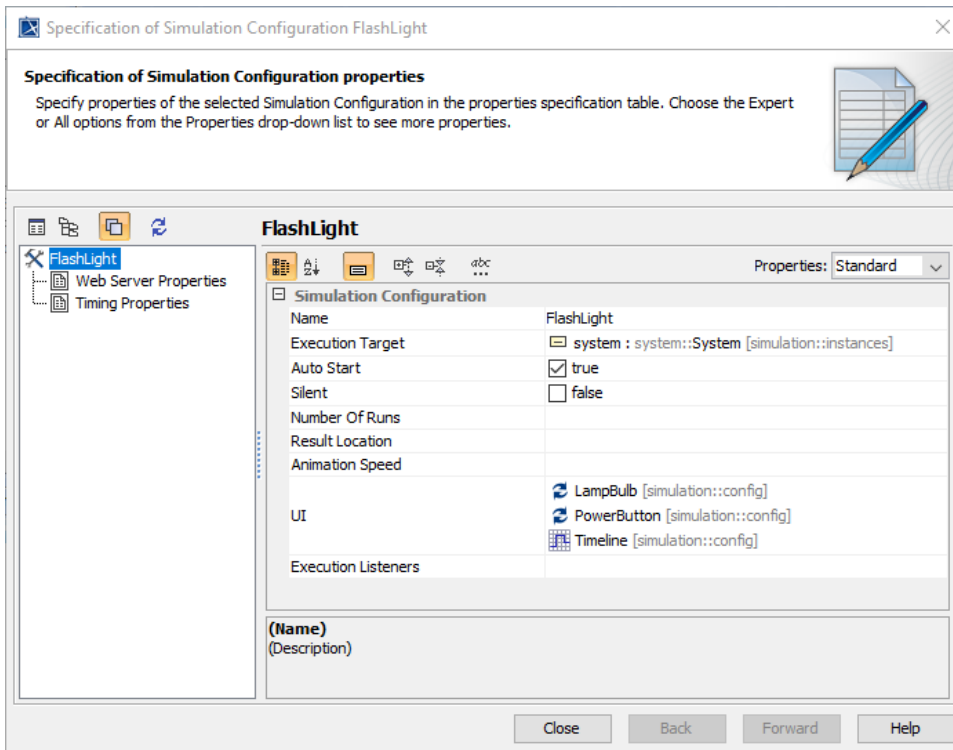
3. Select the values and click . The selected values of the Timeline chart appear in the **Value** tag property of the Specification window.



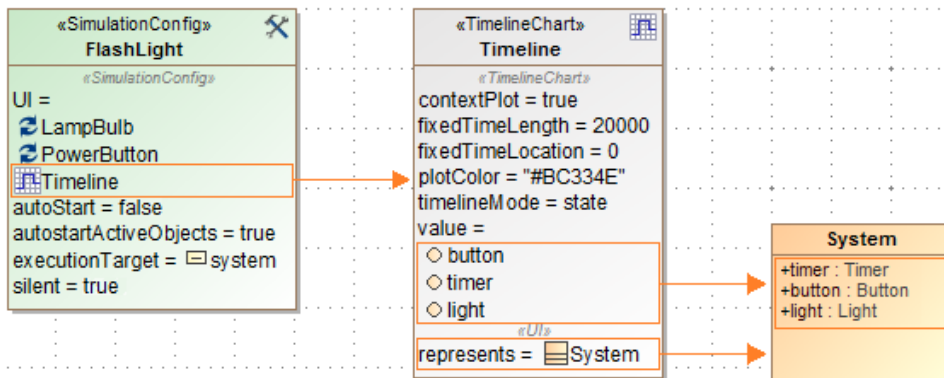
4. Double-click **Simulation Config Flashlight** on the diagram pane to open its Specification window.
5. Click  next to the UI property field. The **Select UI** dialog opens.
6. Select the **Timeline** component and click  to add it to the UI of the Simulation Config.



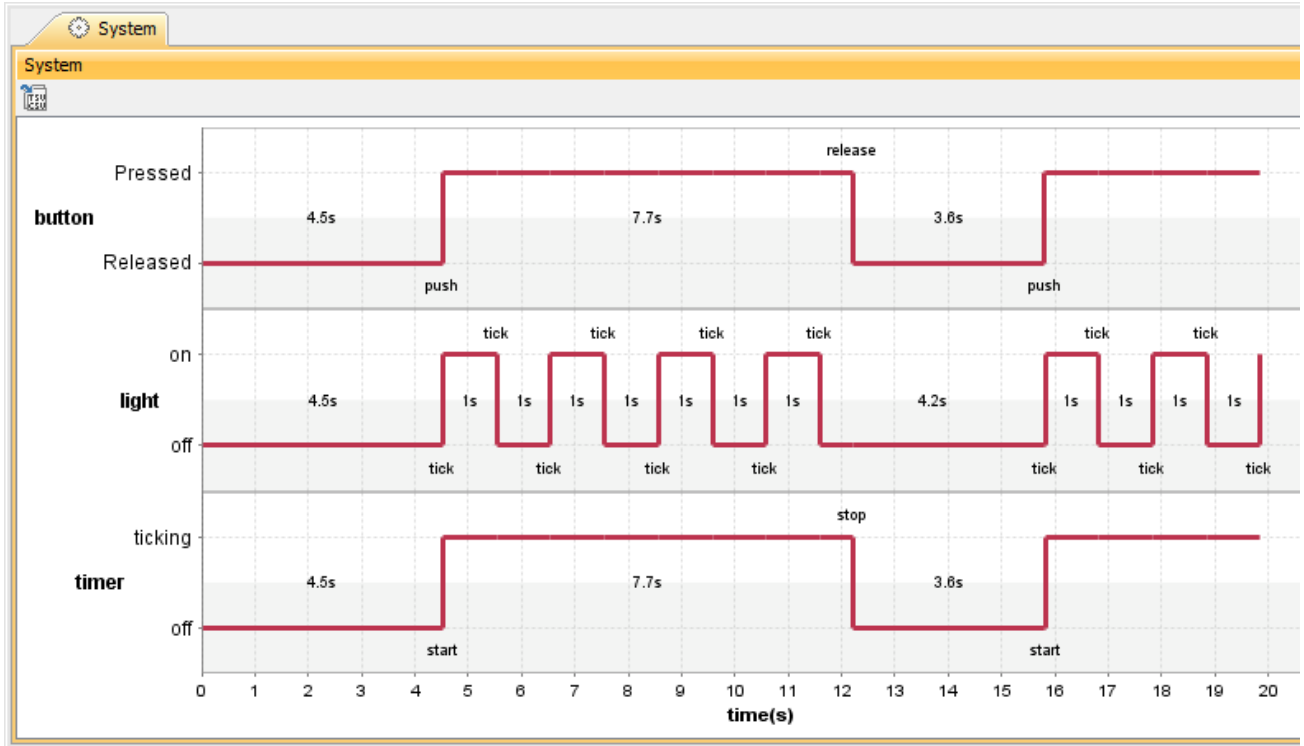
7. Click . The added Timeline component appears as one of the Simulation Config UI properties in the Specification window.



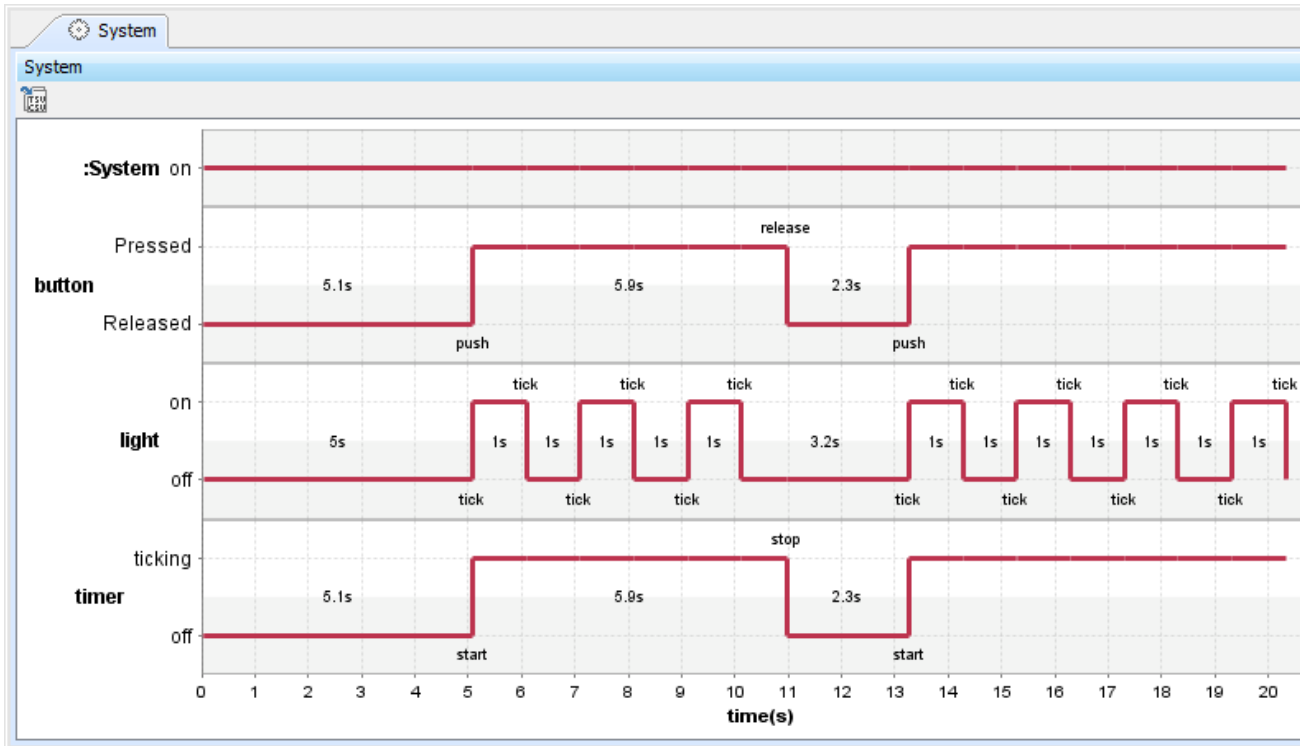
8. Once you specify all of the values, the Simulation Config in the diagram pane shows the Timeline chart, along with the values that represent systems.



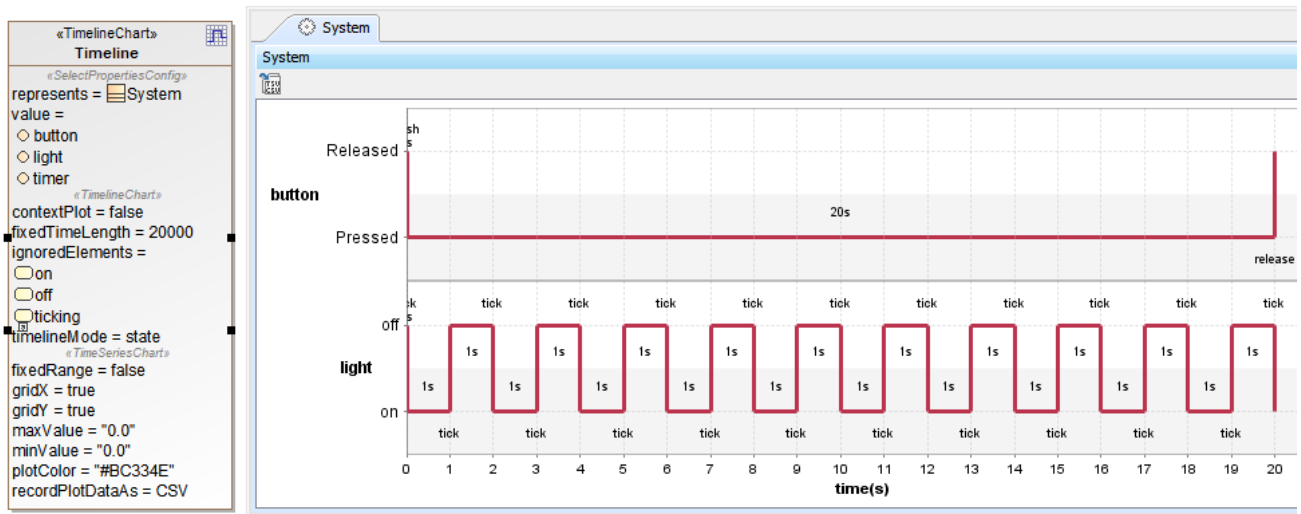
9. Run the Timeline Chart. You can see the animation of the active States in the Timeline Chart when the **Context Plot** option is set to **False** and **True**. The following figure shows the Timeline chart output when the **Context Plot** option in the Specification window is set to **False**.



The following figure shows the Timeline chart output when the **Context Plot** option in the Specification window is set to **True**.



10. Optionally, you can specify in the **Ignored Elements** property what State will be ignored and not be recorded in the Timeline chart if the user does not want to see them. The following figure shows the Timeline chart output when the Ignored Elements property is set to ignore the ticking State and the off State of the timer, and the on State of the system.



The Ignored Elements property set to ignore the ticking State and the off State of timer, and the on State of system.




Important

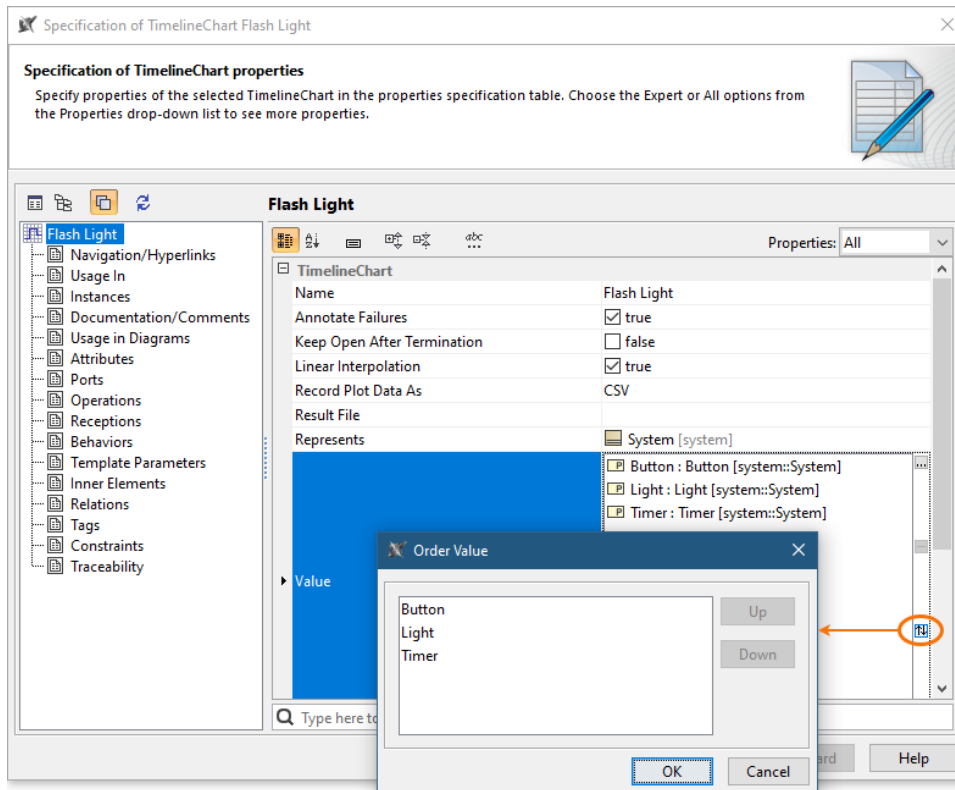
A Timeline chart shows only States and Actions that are actually used, e.g., Actions with duration constraints and signaled States. The used elements will be displayed in the chart and sorted in time order.

Reordering Timeline Chart values

You can reorder the values monitored on a Timeline Chart as described below.

To reorder Timeline Chart values

1. Open the Specification window of a Timeline Chart.
2. Click the property specification cell of the **Value** property and click .

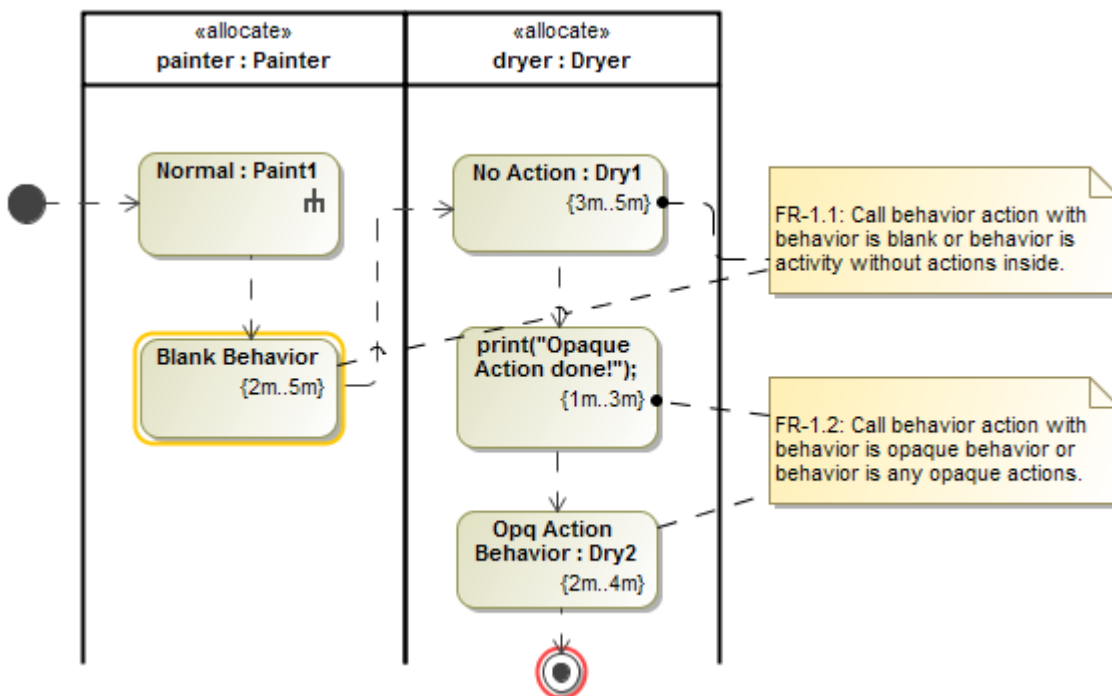


3. In the **Order Value** dialog, select the value whose position you want to change.
4. Click the **Up** button to move the value up or the **Down** button to move the value down.
5. When you are done, click **OK** and close the Specification window.

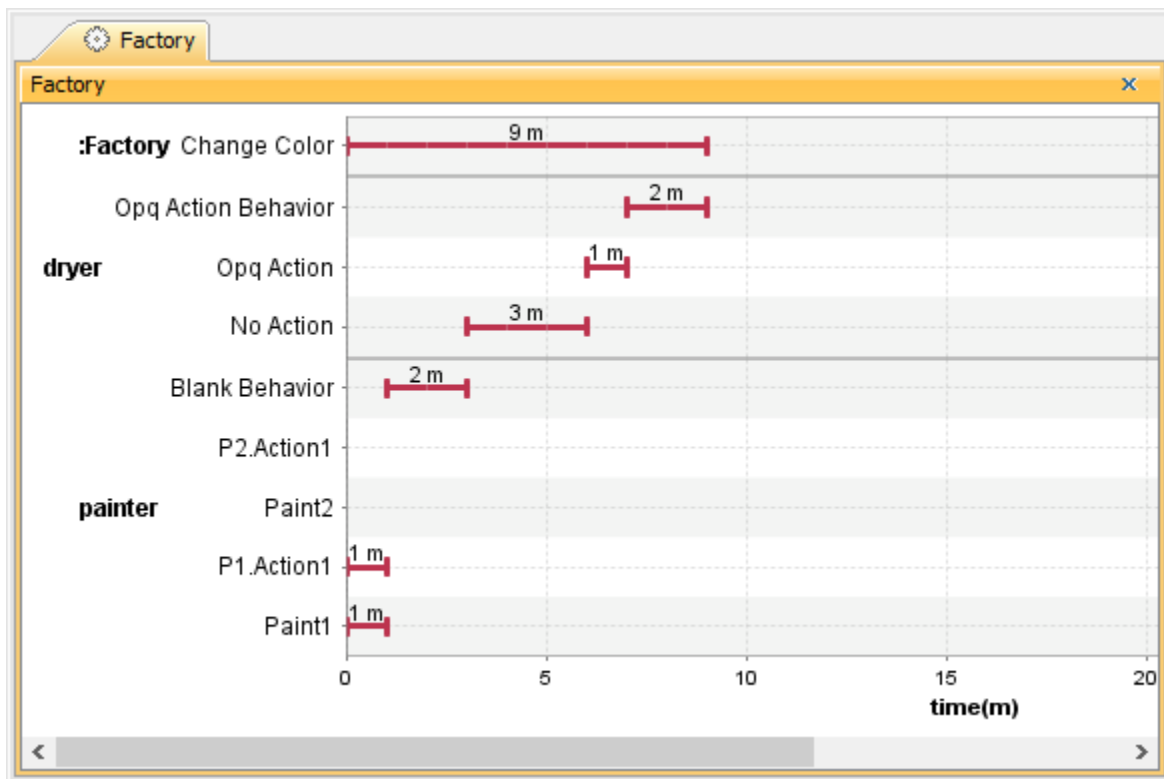
Showing the duration of empty/dummy Actions as duration constraints

To show the duration of empty/dummy Actions as duration constraints

- The Timeline Chart can show empty or dummy actions with duration constraints. The dummy action can be either an empty call Behavior Action with no behavior assigned or an Opaque Action with duration constraints, as shown in the following example.



The Timeline Chart shows the Action names on the left-hand side and the duration simulation performed on the Actions (not the Activities) on the right-hand side. The same thing applies to an Action that has Behaviors assigned, but it is empty and has no diagram. The following figure shows the Timeline chart of the empty/dummy actions from the above example.

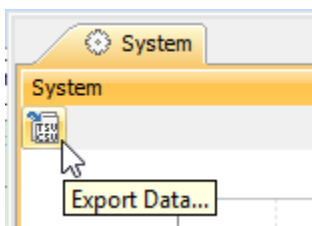


The Timeline chart of the empty/dummy actions.

Exporting a Timeline Chart

To export a Timeline chart

1. On the Timeline chart pane (e.g., System), click the **Export Data** button on the **Timeline Chart** dialog.



2. The Timeline chart will be exported as a CSV format file. The exported Timeline chart in an Excel file is shown in the figure below.

```

Name,Start time,End time,Duration(s)
button.Released,0,0,0
timer.off,0,0,0
light.off,0,0,0
button.Pressed,0,2,2
timer.ticking,0,2,2
light.on,0,1,1
light.off,1,1,0
light.on,1,2,1
light.off,2,2,0
timer.off,2,2,0
button.Released,2,2,0
button.Pressed,2,,
timer.ticking,2,,
light.on,2,2,0
light.off,2,3,1
light.on,3,4,1

```

Timeline chart exported as a CSV format file

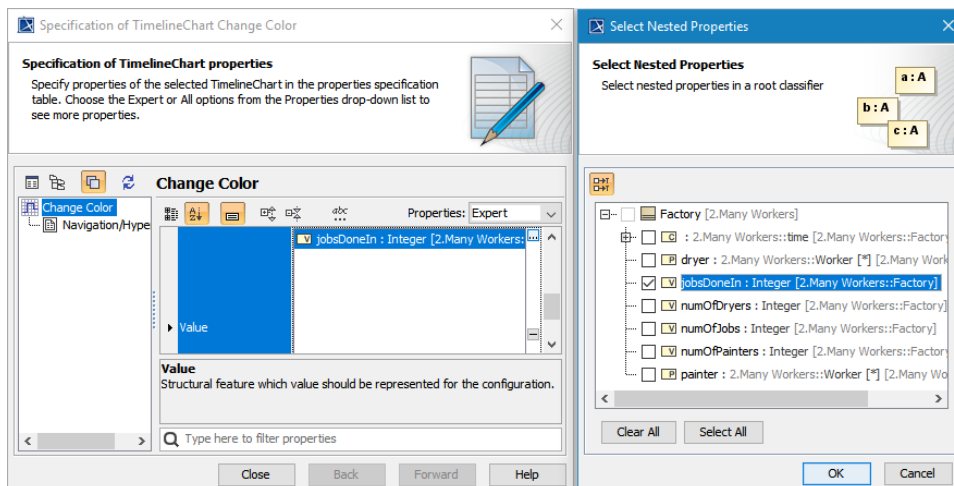
	A	B	C	D
1	Name	Start time	End time	Duration(s)
2	button.Released	0	0	0
3	timer.off	0	0	0
4	light.off	0	0	0
5	button.Pressed	0	2	2
6	timer.ticking	0	2	2
7	light.on	0	1	1
8	light.off	1	1	0
9	light.on	1	2	1
10	light.off	2	2	0
11	timer.off	2	2	0
12	button.Released	2	2	0
13	button.Pressed	2		
14	timer.ticking	2		
15	light.on	2	2	0
16	light.off	2	3	1
17	light.on	3	4	1

Timeline chart exported as an Excel file

Representing Time Series Charts in a Timeline Chart

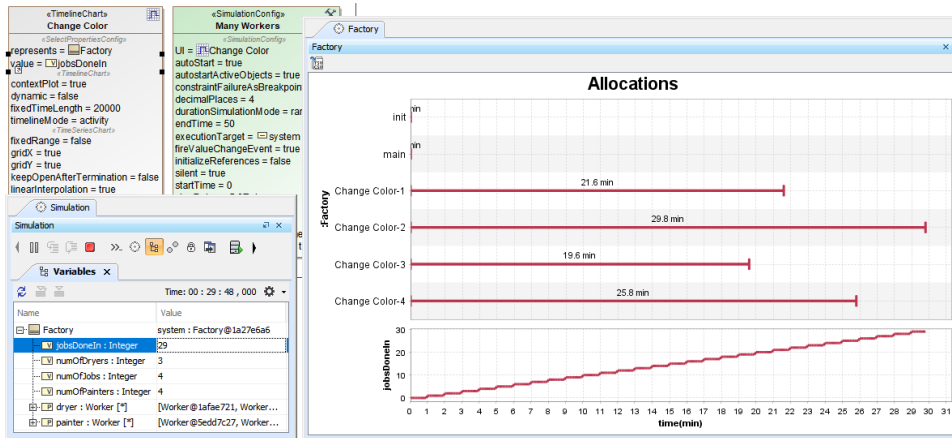
To represent value properties as separated Time series charts in a Timeline chart

1. Open the Specification window of a Timeline chart and click the **Value** tag. Boolean, Enumeration, and Numeric primitive value types (e.g., Number, Real, or Integer), are supported as shown in the following figure.



Selecting numeric primitive value types in Value of a Timeline chart.

2. Run the simulation with the Timeline chart. The selected value properties will be included in the Timeline chart and represented as the Time series chart with fixed height, as separate bars for individual properties (shown in the figure below).



The selected jobsDoneIn value property is represented as the Time series chart in form of separated bars in the Timeline chart.

Glossary

- Context plot**
 A Context plot is a Timeline chart property that enables the plot of the context. It appears on top of the chart as a horizontal line.
- CSV**
 A CSV is a comma-separated values file that stores tabular data (text and number) in plain text. Each line in the file is a record and each record consists of one or more fields, separated by commas.
- Oscilloscope**
 A piece of equipment showing oscillations in an electric current as waves on the screen.
- Timeline chart**
 A Timeline chart is used to describe the Behaviors of both individual Classifiers and Interactions of the Classifiers, focusing attention on the time of events triggering a State change.
- TSV**
 A TSV is a tab-separated values file that stores data in a tabular structure (e.g. database or spreadsheet data). Each line in the file is a record and each record consists of one or more fields, separated by tabs.

Sample model

The models used in the figures on this page are the **FlashingLight** and **OntologicalBehaviorModeling** sample models that come with your modeling tool.

To open the sample, do either of the following

- Download [FlashingLight.mdzip](#) or [OntologicalBehaviorModeling.mdzip](#).
- Find it in the modeling tool `<install_root>\samples\simulation\`.