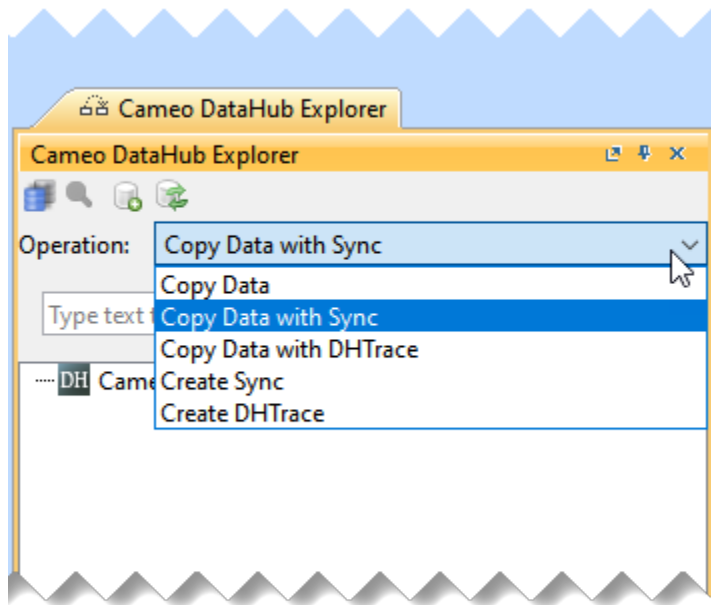


# Operations in DataHub Explorer


The **Operation** list in the **Cameo DataHub Explorer** panel provides several options for you to work with your data.



Operation drop-down list

The table below briefly explains the functions of the DataHub operations.

Operation	Function
Copy Data	Only copies the data with child nodes.
Copy Data with Sync	Copies data and creates synchronization (DHLinks) between the source and target nodes. Nodes in the modeling tool are updated or deleted whenever their corresponding nodes in associated tools are updated or deleted. The newly created nodes can be transferred to other associated tools as well.
Copy Data with DHTrace	Copies data and creates DHTrace links between the source and target nodes. DHLinks are used to trace the changes.
Create Sync	Recreates synchronization (DHLinks) if you lose or delete the DHLinks without replicating the data.
Create DHTrace (with OSLC links)	Creates DHLinks between the source and target nodes without copying any data. Creates an OSLC link from an IBM® Rational® DOORS® Next Generation Data Source to a MagicDraw® element.



- The parent-and-child relationships are transferred from the source to the target items.

**Related Pages** • The dependency relationships from MagicDraw® are also transferred if both the source and target nodes are selected.

- By default, **Copy Data with Sync** is selected in the operations list.
- [Copy Data operation](#)
- [Copy Data with Sync operation](#)
- [Copy Data with DHTrace operation](#)
- [Create Sync operation](#)
- [Create DHTrace operation with OSLC links](#)
- [Compatible data sources](#)