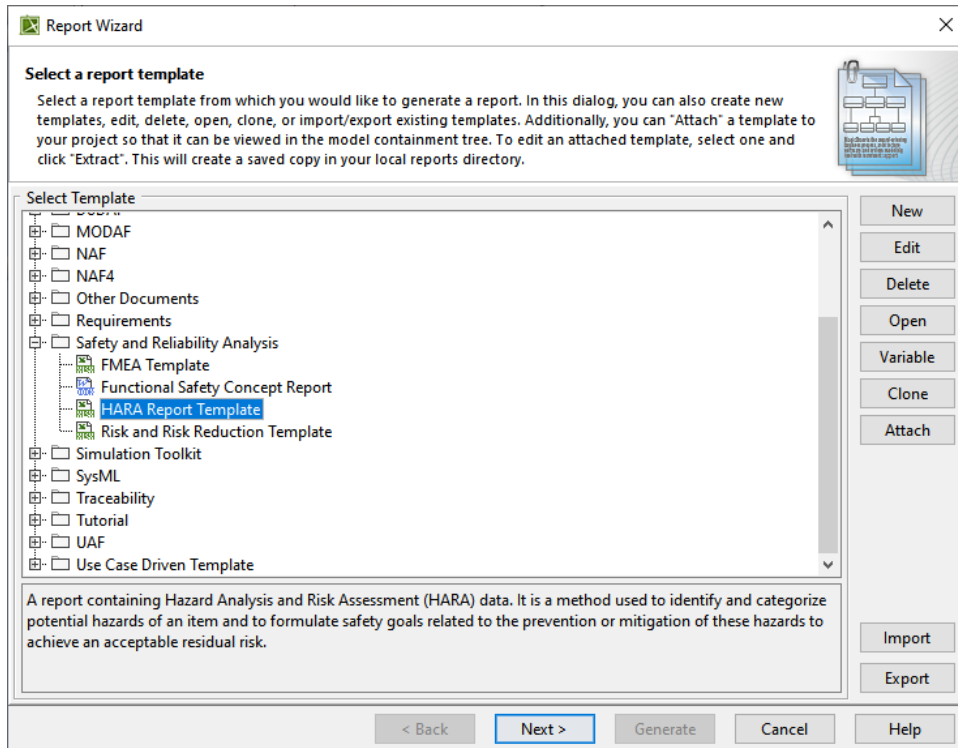


Reports

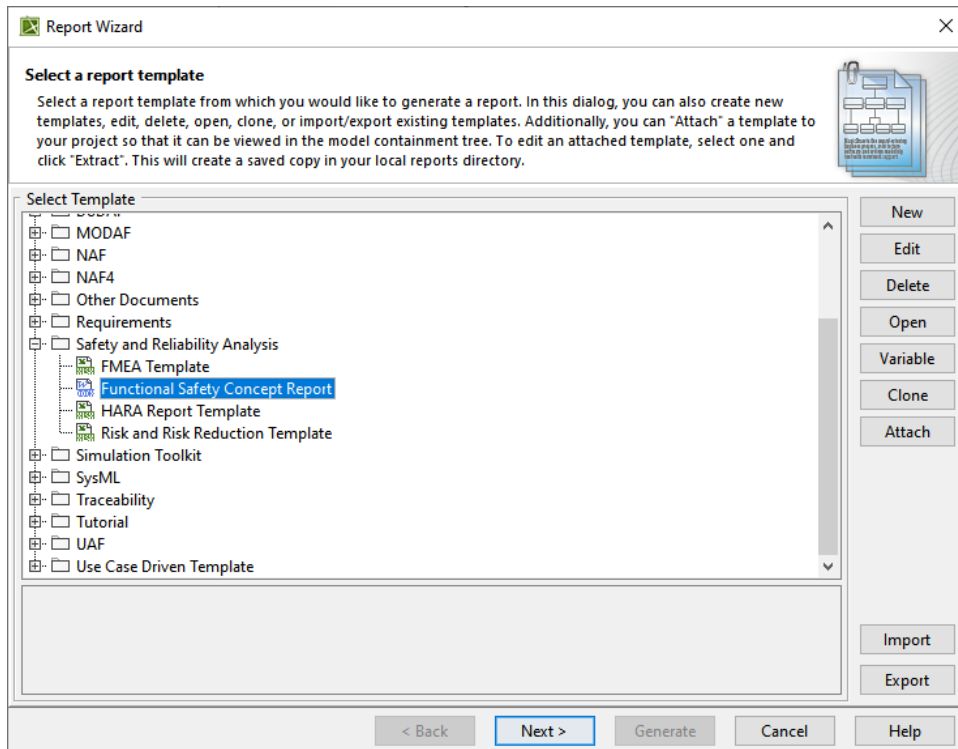
The [Report Wizard](#) is capable of generating reports that include data on HARA (Hazard Analysis and Risk Assessment) and the Functional Safety Concept. Once the report is generated, it automatically opens for viewing. The **HARA** report presents a comprehensive overview of identified potential hazards and their associated risks. It categorizes these hazards and provides an analysis of the risks involved. The **Functional Safety Concept** report focuses on the derived functional safety requirements. It shows how these requirements are derived from the safety goals and demonstrates their relationships.

To generate a report

1. In the main menu of your modeling tool, select **Tools > Report Wizard**.
2. Do one of the following:
 - Select **HARA Report Template** to create a report containing HARA data and click **Next**.



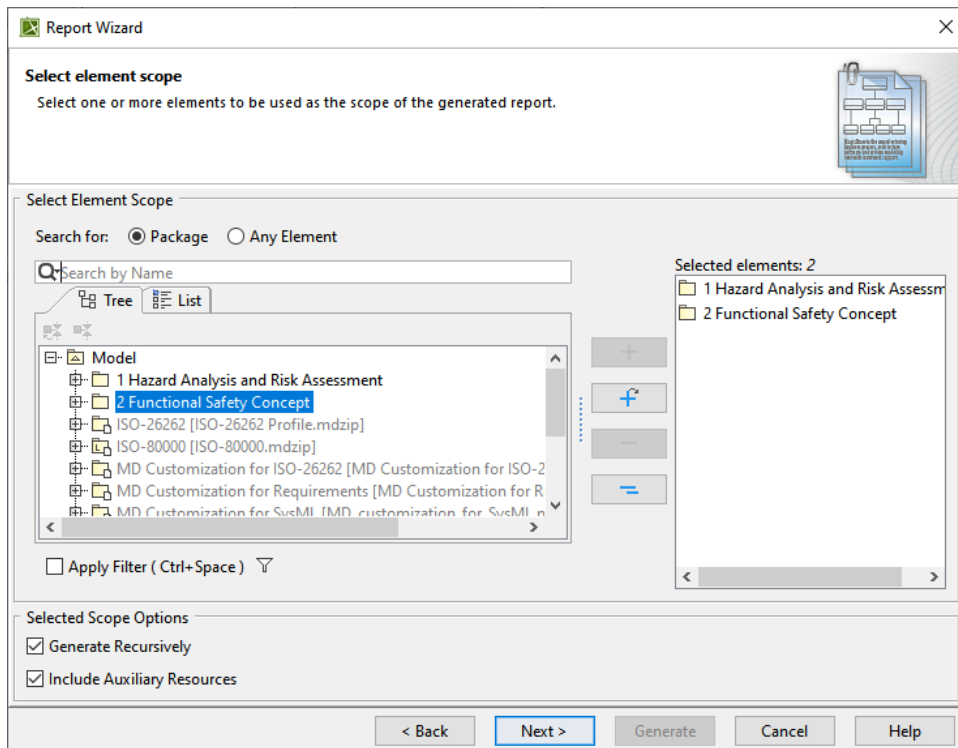
- Select **Functional Safety Concept Report** to generate a report containing functional safety concept data and click **Next**.



3. To include built-in data in the report, select **Built-in** and click **Next**.

4. Do one of the following:

- To generate a **HARA** report, select the packages containing HARA elements and system functions and then click **Next**.
- To generate the **Functional Safety Concept** report, select the packages containing Functional Safety Concept elements and then click **Next**.



To learn more about selecting report data, refer to the [Select Element Scope](#) pane.

5. Configure the report file by specifying the report file location and image format. Then Click **Generate**.



To learn more about configuring output options, refer to the [Generate Output pane](#).

Following are examples of the **HARA** and **Functional Safety Concept** reports.

Company Name:

Document No:

Approved Date:

Document Name:

Page: 1 of 1



Revision:

Effective Date:

HazOp								
System Function	More	Less	Unintended	Intermittent	Late	Early	Inverted	No
Steering Assist	Excessive Steering Assist;	Reduced Steering Assist;	Unintended Steering Assist;	Reduced Steering Assist;	Unintended Steering Assist;	Unintended Steering Assist;	Reverse Steering Assist;	Loss of Steering assist; Locked Steering;

Example of the **HARA** report.


2 Safety Goals

ID	Name	Text	ASIL	Hazardous Event	ASIL from HE
1	 Prevent Unintended Vehicle Lateral Motion	Vehicle yaw shall stay within nn' of drivers input.	D	 Steering Assist	D

3 Functional Safety Requirements

3.1 Specification of Functional Safety Requirements

User Informed About No Power Steering

ID	10		
Name	 User Informed About No Power Steering		
Text	There shall be a dashboard indicator for no power steering		
ASIL			
ASIL Override Justification			
Safety Goal Ref		Functional Safety Requirement Ref	
ASIL from SG		ASIL from FSR	
Safe State		Operating Mode	
Fault Tolerant Time interval	0.0		

Example of the Functional Safety Concept report.