

Model merge in Teamwork Cloud

On this page

- [Starting model merge](#)
- [Local model merge](#)
- [Model merge for Teamwork Cloud](#)



You need to have the Project Merge plugin installed to use the merge functionality.

Starting model merge

Start the merge using either of the following:

- From **Collaborate > Merge From**:

You can apply this method of starting a merge exclusively to Teamwork Cloud projects. For Teamwork Cloud projects, you do not need to specify the ancestor; it will be instantly identified after the source is selected. By default, the lowest common parent of two branches is considered a common ancestor.

- From **Tools > Project Merge**.

You can apply this method of starting a merge to both local and Teamwork Cloud projects, although used projects can be included in a merge only for server projects. You must specify both the source and the ancestor, and manually choose the 3-way or 2-way merge.



- For Teamwork Cloud projects, the modeling tool automatically applies the 3-way merge, as a merge is only available between project versions



Conflicting changes detected during merge are automatically resolved by accepting changes either from the Source or the Target version. To specify a contributor, go to **Options > Environment > General > Merge and Compare** and then go to **Automatically Resolve Conflicts by Choosing**, select either **Target** or **Source**.

Local model merge

- While merging with lock is in progress in a server project on the Teamwork Cloud server, other users cannot commit the changes to the server.

To start merge from **Tools > Project Merge**

1. Open a project that will be the **target**.
2. From the **Tools** menu, select **Project Merge**. The **Merge Projects** dialog will open within the active project selected as the target.
3. Select the type of merge.



Learn about 3-way and 2-way merge in [Choosing merge type](#).

4. Select a project that will be the **source**.
5. If you selected 3-way merge, choose a project that will be the ancestor.
6. Click the ☒ **Advanced** button to see more merge options. Otherwise, go to [step #8](#).
7. In the **Optimize for** drop-down list, select either:
 - **Speed**, to merge the projects faster. This will require more memory.
 - **Memory**, to decrease memory usage while merging the projects if your computer does not have enough memory. This will use less memory but at the same time will slow down the merge procedure when the project has many changes in diagrams. It will not include the differing diagrams/elements count. If you need that information, select optimize for **Speed**.

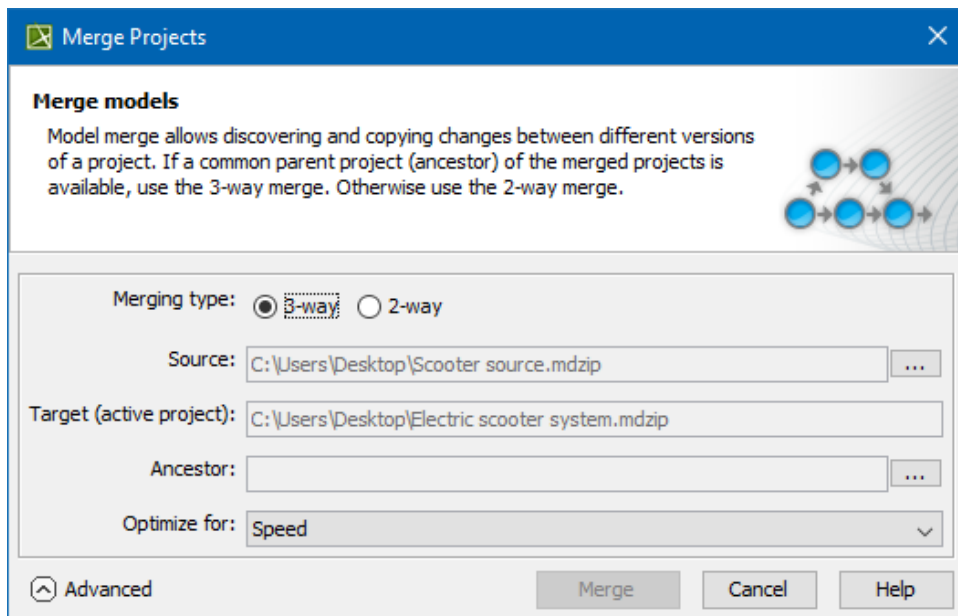


You can also specify the **Optimize for** option in the **Environment Options** dialog. Find this option under the **Merge and Compare** category in the **General** options group.



If the **Low memory** notification keeps popping up during merge, we recommend that you do one of the following:

- increase the amount of memory allocated for the modeling tool
- optimize Merge and Compare for **Memory**

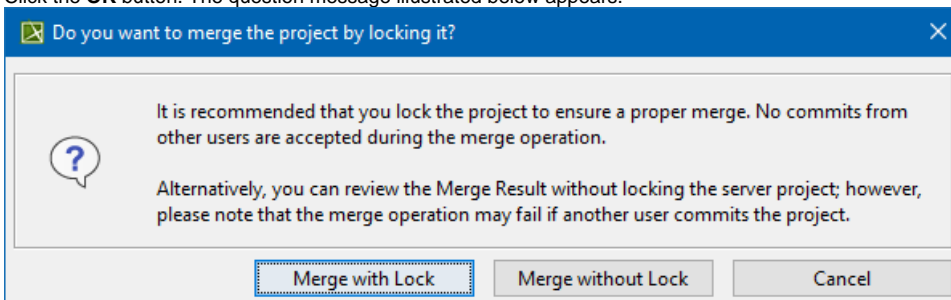


8. Click the **Merge** button. The project merge will start. If changes are found, the **Merge** window will open. Proceed to [Analyzing and managing merge results](#).

Model merge for Teamwork Cloud

To start a merge of the from **Collaborate > Merge From**

1. Open a server project that will be the [target](#).
2. From the **Collaborate** menu, select **Merge From**.
3. In the opened dialog, select a server project that will be the [source](#).
4. Click the **OK** button. The question message illustrated below appears.



5. Do one of the following:
 - Click **Merge with Lock** to lock the server project before merging. Other users cannot commit the changes.
 - Click **Merge without Lock** to perform the merge operation without locking the server project.



we recommend that you select **Merge with Lock** to merge the project changes. To review the Merge Result, choose **Merge without Lock**.


- Click **Cancel** merge process and close the dialog.
6. The project merge will start. If changes are found, the **Merge** window will open.
 7. Proceed to [Analyzing and managing merge results](#).





In this case, **Lowest Common Parent** is considered a common ancestor by default.

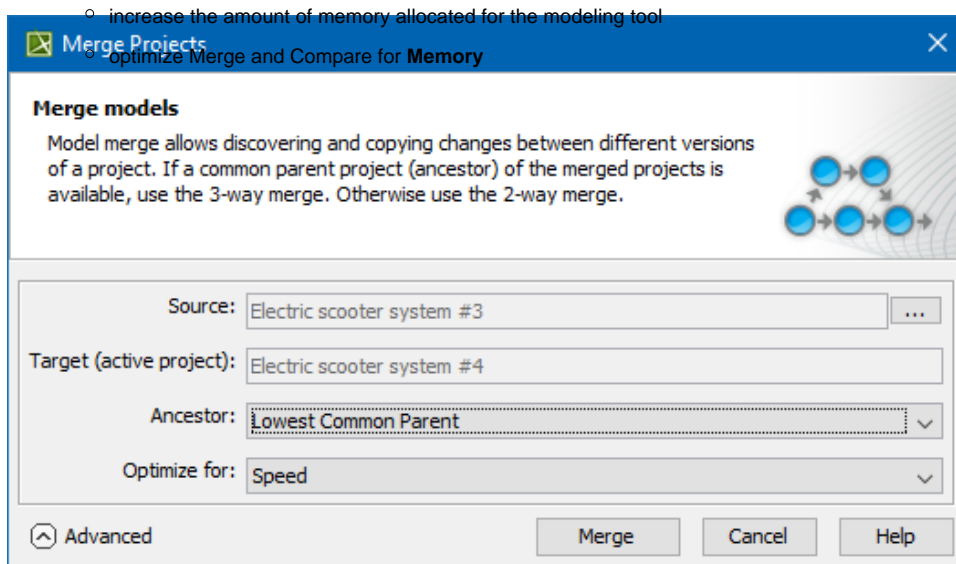
To start merge from **Tools > Project Merge**

1. Open a project that will be the [target](#).

2. From the **Tools** menu, select **Project Merge**. The **Merge Projects** dialog will open within the active project selected as the target.
3. Select a project that will be the [source](#).
4. Click the  **Advanced** button to see more merge options. Otherwise, go to [step #7](#).
5. In the **Ancestor** drop-down list, select either:
 - **Lowest Common Parent** to select the lowest common ancestor according to graph logic during the project merge.
 - **Branch Point** to select the version the branch was created from during the project merge.
6. In the **Optimize for** drop-down list, select either:
 - **Speed**, to merge the projects faster. This will require more memory.
 - **Memory**, to decrease memory usage while merging the projects if your computer does not have enough memory. This will use less memory but at the same time will slow down the merge procedure when the project has many changes in diagrams. It will not include the differing diagrams/elements count. If you need that information, select optimize for **Speed**.

 You can also specify the **Optimize for** option in the **Environment Options** dialog. Find this option under the **Merge and Compare** category in the **General** options group.

 If the **Low memory** notification keeps popping up during merge, we recommend that you do one of the following:



7. Click the **Merge** button. The question message illustrated in the previous section will appear.
8. Do one of the following:
 - Click **Continue** to lock the server project and continue the merge process. Other users will not be able to commit changes.
 - Click **Show Merge Results** to proceed directly to the Merge Results.
9. The project merge will start. If changes are found, the **Merge** window will open. Proceed to [Analyzing and managing merge results](#).

Related pages

- [Model Merge](#)
- [Understanding merge types](#)
- [Understanding change concept](#)
- [Preparing for merge](#)
- [Analyzing and managing merge results](#)
 - [Getting merge summary information and changes legend](#)
 - [Understanding content of the Merged Result panel](#)
 - [Inspecting element property changes in the Specification panel](#)
 - [Inspecting changes in the Change details panel](#)
 - [Displaying and navigating through changes](#)
 - [Quickly navigating through conflicting changes](#)
 - [Accepting and rejecting changes using shortcut menu](#)
 - [Viewing and analyzing changes of modified diagrams](#)
 - [Generating a differences report](#)
- [Finishing and canceling merge](#)