

# Installing plugins



For information about plugin installation in versions prior to the 2022x version, see the [Installing plugins in earlier versions](#) page.

Choose one of the following ways to install a plugin in a modeling tool:

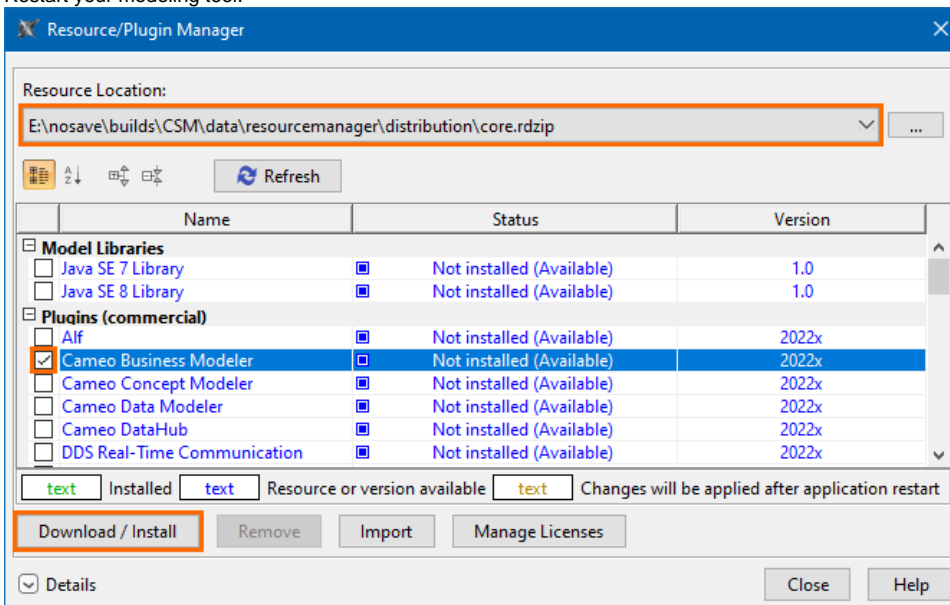
- [Installing our commercial and no-cost plugins](#)
- [Installing custom plugins](#)
  - [Adding plugins from an .rdzip file located on a local file system or network share](#)
  - [Adding plugins from a web server](#)
- [Other plugin installation options](#)
  - [Installing an individual plugin by importing a .zip file](#)
  - [Installing an individual plugin by extracting a .zip file](#)

## Installing our commercial and no-cost plugins

All available plugins provided by us, both commercial and no-cost, are accessible via the *core.rdzip* file, which is pre-bundled together with the installation files and is readily available in the **Resource/Plugin Manager**. The available plugins depend on the modeling tool that you are using. The file is located at `<tool_installation_directory>\data\resourcemanager\distribution\core.rdzip`, however, it is added automatically to the **Resource/Plugin Manager**.

To install our commercial and no-cost plugins

1. In the main menu, select **Help > Resource/Plugin Manager**. The pre-bundled *core.rdzip* file containing all available plugins is loaded automatically.
2. Select the check boxes for the plugins you want to install.
3. Click the **Download/Install** button to install the selected plugins.
4. Restart your modeling tool.



## Installing custom plugins

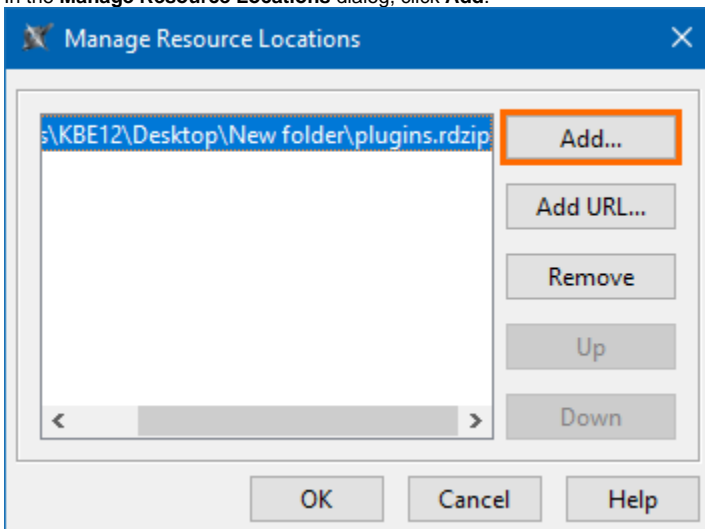
If you are using custom-built plugin *.rdzip* files located on a local file system, network share, or a web server, you can add the plugins from the file by specifying its location via the **Resource/Plugin Manager**.

### Adding plugins from an *.rdzip* file located on a local file system or network share

To add plugins from an *.rdzip* file located on a local file system or network share

1. In the main menu, select **Help > Resource/Plugin Manager**.
2. In the **Resource Location** section, click the button.

3. In the **Manage Resource Locations** dialog, click **Add**.

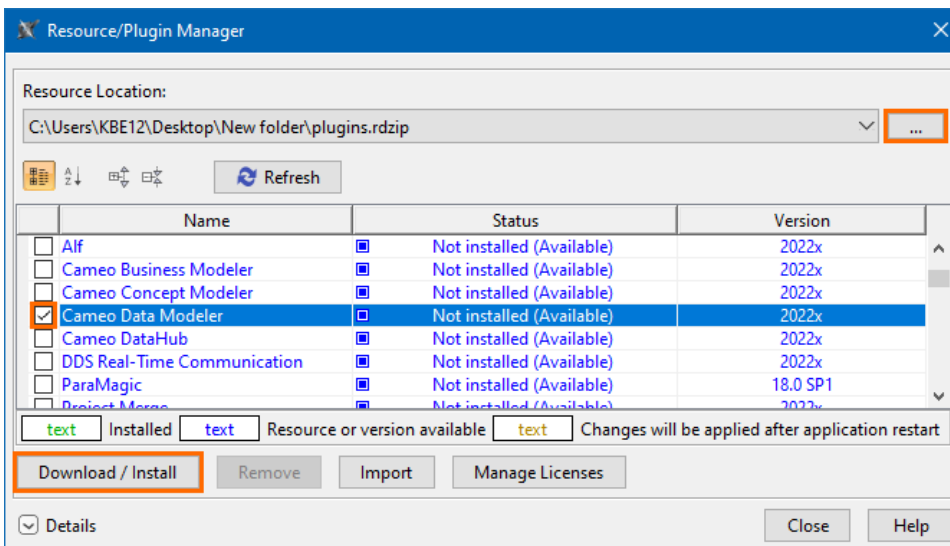


You can manage the list displayed in the **Manage Resource Locations** dialog by adding, removing, or reordering the resource locations.

4. The **Select Resource Location or Distribution File** dialog opens. Specify the location of the plugin bundle (*.rdzip*) file and click **Open**. The resource location is added.
5. Click **OK** to import the resources.
6. Select the check boxes for the plugins you want to install.
7. Click the **Download/Install** button to install the selected plugins.
8. Restart your modeling tool.



You can extract an *.rdzip* file and then [add selected plugins individually](#).



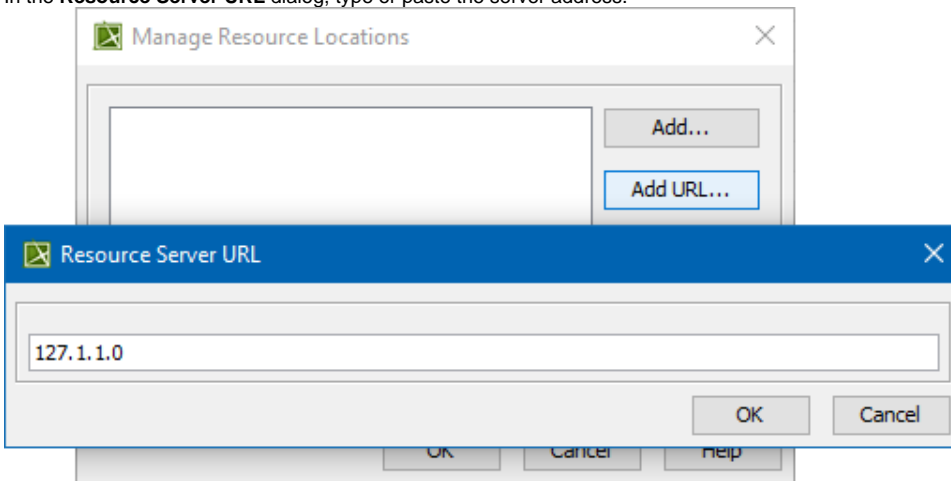
## Adding plugins from a web server

You can also obtain the needed plugins from a web server if you do not have the *.rdzip* file but have been provided a URL by your license manager.

To add plugins from a web server

1. In the main menu, select **Help > Resource/Plugin Manager**.
2. In the **Resource Location** section, click the  button.
3. In the **Manage Resource Locations** dialog, click **Add URL**. The **Resource Server URL** dialog opens.

4. In the **Resource Server URL** dialog, type or paste the server address.



5. Click **OK**. The plugins from the selected location are listed in the **Resource/Plugin Manager**.

## Other plugin installation options

The default and the recommended option is to [use the pre-bundled core.rdzip file](#) which is added automatically, however, you can also install individual plugins from their `.zip` files.

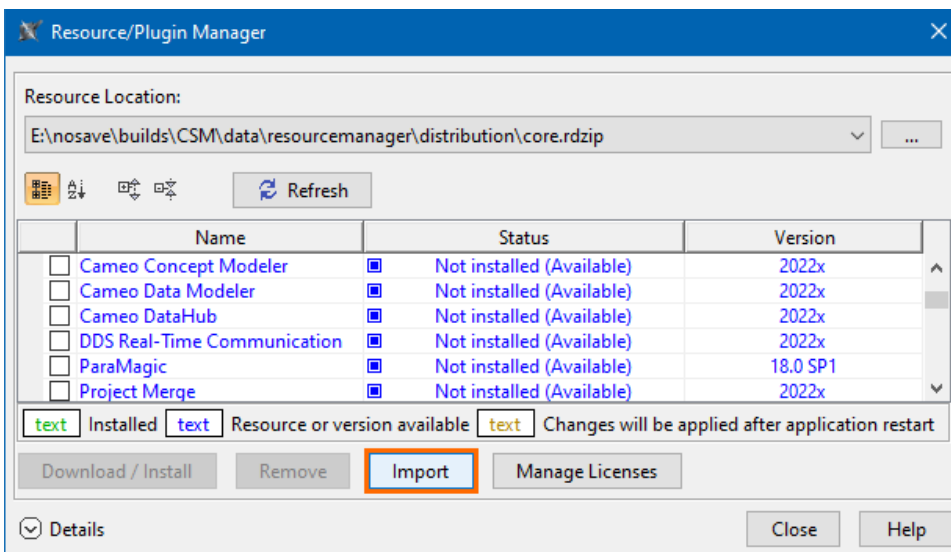
### Installing an individual plugin by importing a `.zip` file

To install an individual plugin by importing a `.zip` file

1. In the main menu, select **Help > Resource/Plugin Manager**.
2. Click the **Import** button and specify the location of the archived plugin file (`.zip`) and click **Open**. The plugin is extracted and installed automatically.
3. Restart your modeling tool.



The **Import** button is used to install only an individual plugin by importing an archived plugin file (`.zip`). To install plugins from an `.rdzip` plugin bundle file, you need to add the `.rdzip` file by [specifying its Resource Location](#).



### Installing an individual plugin by extracting a `.zip` file

To install an individual plugin by extracting a `.zip` file

1. Extract an archived plugin file (`.zip`) file to the same directory where your modeling tool is installed.
2. Start the modeling tool. The plugin is installed on your modeling tool.



#### Getting help

If you run into any installation-related problems, try the following:

- Check the [FAQ section](#) for known problems.
- Check the [No Magic Community forum](#).
- Contact [customer support](#).