

Obtaining a floating license for a modeling tool

Prerequisites

- The FlexNet floating license server is [installed](#) and started.
- You have the floating license server name and port (provided by your system or license server administrator).

Procedure

1. Start the modeling tool.
2. When the **License Manager** dialog opens, click the **Use Floating License** button.



To open this dialog manually, select **Help > License Manager**.

3. In the **FlexNet License Server Connection** dialog, enter the floating license server name and port (provided by your system or license server administrator). Click **OK**.



If the **Automatically login each time <modeling tool> is started** checkbox is selected, the **FlexNet License Server Connection** dialog will not be displayed and the licenses will be obtained automatically. To reset the licenses or select additional ones, do the following:

- a. In the main menu, click **Options > Environment**. The **Environment Options** dialog opens.
- b. In the **Floating** options group, set the **Auto login to FlexNet License Server** option to *false*.
- c. Restart the modeling tool.

4. In the **Select Edition/Plugin** dialog, select the modeling tool edition, plugins you want to use, and the floating license connection type: online or offline ([borrowing](#)). Click **OK**.

Select Edition/Plugin

Edition

☐ Architect (0 of 50 licenses are in use)
☒ Enterprise (23 of 50 licenses are in use)
☐ Professional C# (0 of 50 licenses are in use)
☐ Professional C++ (0 of 50 licenses are in use)
☐ Professional Java (0 of 50 licenses are in use)
☐ Standard (2 of 50 licenses are in use)

Plugins

☒ Cameo Requirements Modeler (20 of 100 licenses are in use)
☒ Project Merge (55 of 100 licenses are in use)
☒ SysML (20 of 100 licenses are in use)

☒ Remember plugin selection for the next time

Refresh Used Licenses

Connection

☒ Online
☐ Offline

Borrow period in hours (1 - 1 440):

OK

Cancel

Help



To obtain a floating license for your plugin, you must install it in your modeling tool first. Once the plugin is installed, you will find it listed under **Plugins** in the **Select Edition/Plugin** window. [Click here to learn how to install a plugin.](#)

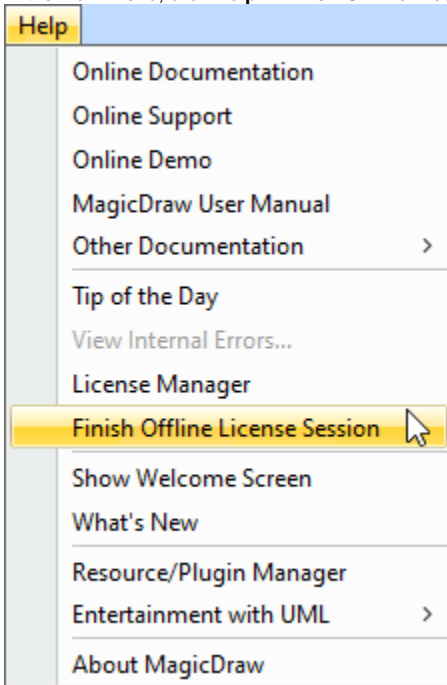


To check the license information, select **Help > About** and click the **Licensing** tab.

Finishing offline floating license session

To finish an offline floating license session earlier

1. In the main menu, click **Help** > **Finish Offline License Session**.



2. Click **Yes**.