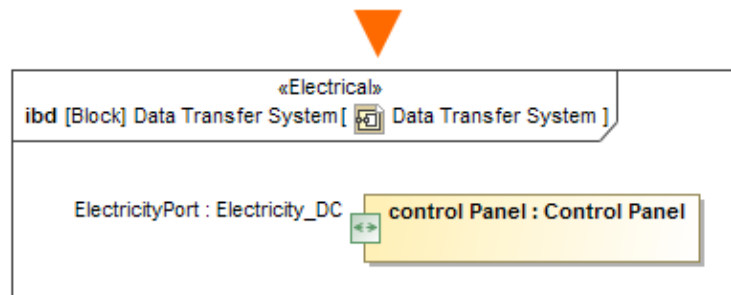
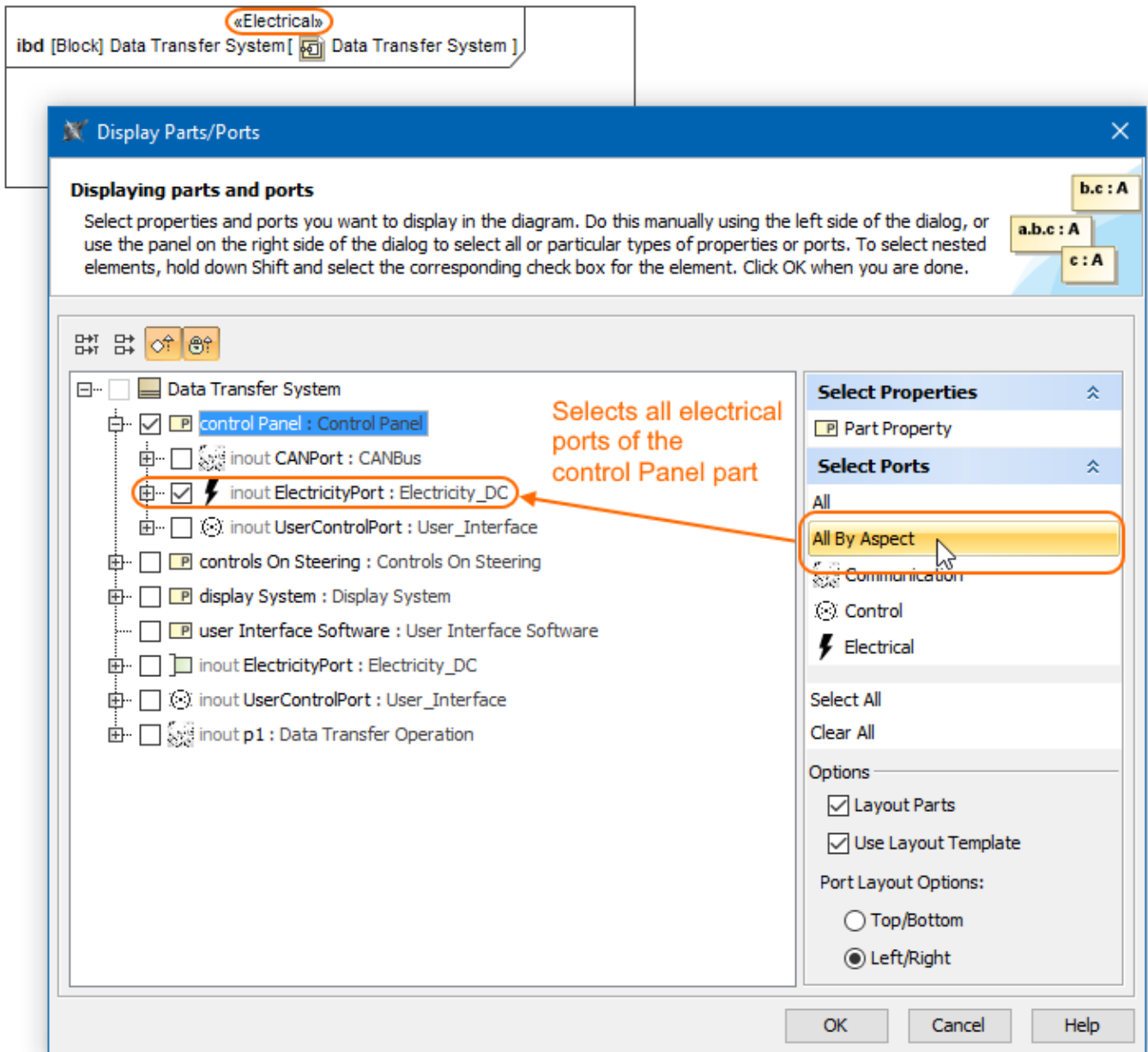


Displaying parts and ports according to aspects

Before using this feature, make sure:

- The diagram with aspect is created. [The main workflow of using aspects >>](#)
- The part and/or port stereotype names matches the aspect name. [Matching rules >>](#)

When displaying Parts/Ports in the aspect diagram, e.g., Electrical *Data Transfer System* Internal Block Diagram, you can display all the parts/ports of an appropriate aspect, e.g., Electrical, by using the **All By Aspect** button. After selecting this button, all parts or ports that match the diagram's aspect can be displayed. The figure below demonstrates the usage of this button in the **Display Parts/Ports** dialog when you are trying to display all electrical aspect ports of the selected *control Panel* part.



The All By Aspect button usage in the Display Parts/Ports dialog. The illustration displays concepts from SysML Plugin.

Sample model

The model used in the figures of this page is the **Diagram aspects** sample models that comes with [SysML Plugin](#). To open this sample properly you need to install the SysML plugin in the MagicDraw and:

- Download [diagram aspects.mdzip](#).
- Find in the modeling tool: <modeling tool installation directory>\samples\SysML\diagram aspects.mdzip.

