

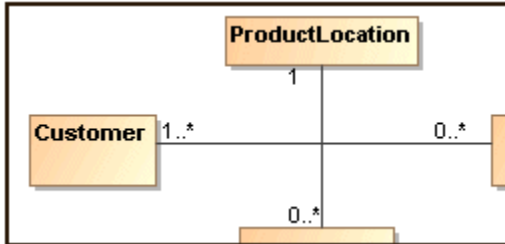
# Creating line jump

Line jumps represent an intersection of lines. If you have a large diagram with lots of intersecting paths, line jumps make the diagram easier to understand. The line jumps are not displayed by default.

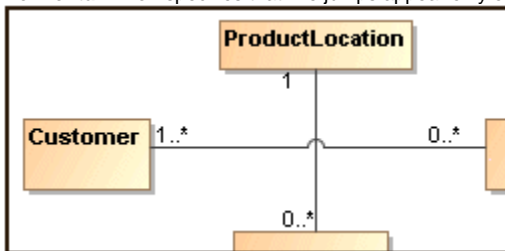
To add line jumps

1. Right-click the diagram pane and select **Diagram Properties**.
2. In the **Diagram Properties** dialog, select the **Add Line Jumps To** property value from the drop-down list:

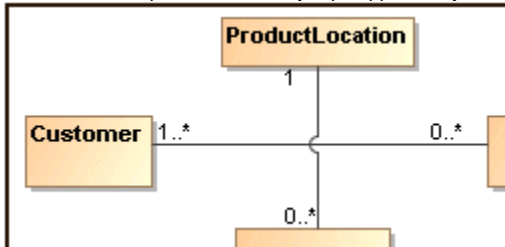
- **None** - specifies that the diagram use no line jumps (default value).



- **Horizontal Line** - specifies that line jumps appear only on a horizontal line.



- **Vertical Line** - specifies that line jumps appear only on a vertical line.



The line jump changes are applied for the current diagram only. To change line jumps for the whole project, see [Formatting symbols](#).