


# Selecting elements

The element Selection dialog is used for selecting elements from available contents and adding them to a certain destination scope. The title of the dialog varies depending on the way it is invoked. Depending on the content, the element Selection dialog is used for selecting an element, diagram, or owner. The types of elements available for selection determine the presence of the specific element type filters in the dialog.

**Teamwork Cloud projects**  
The following message indicates that the representation text indexing is not complete. It is not recommended that you perform element searches while the indexing is in progress. Otherwise, depending on the project size, the search operation might be slow, and the memory consumption might increase.

The element Selection dialog also opens when assigning a property value - the particular element or elements. For example, the element Selection dialog opens when assigning the b

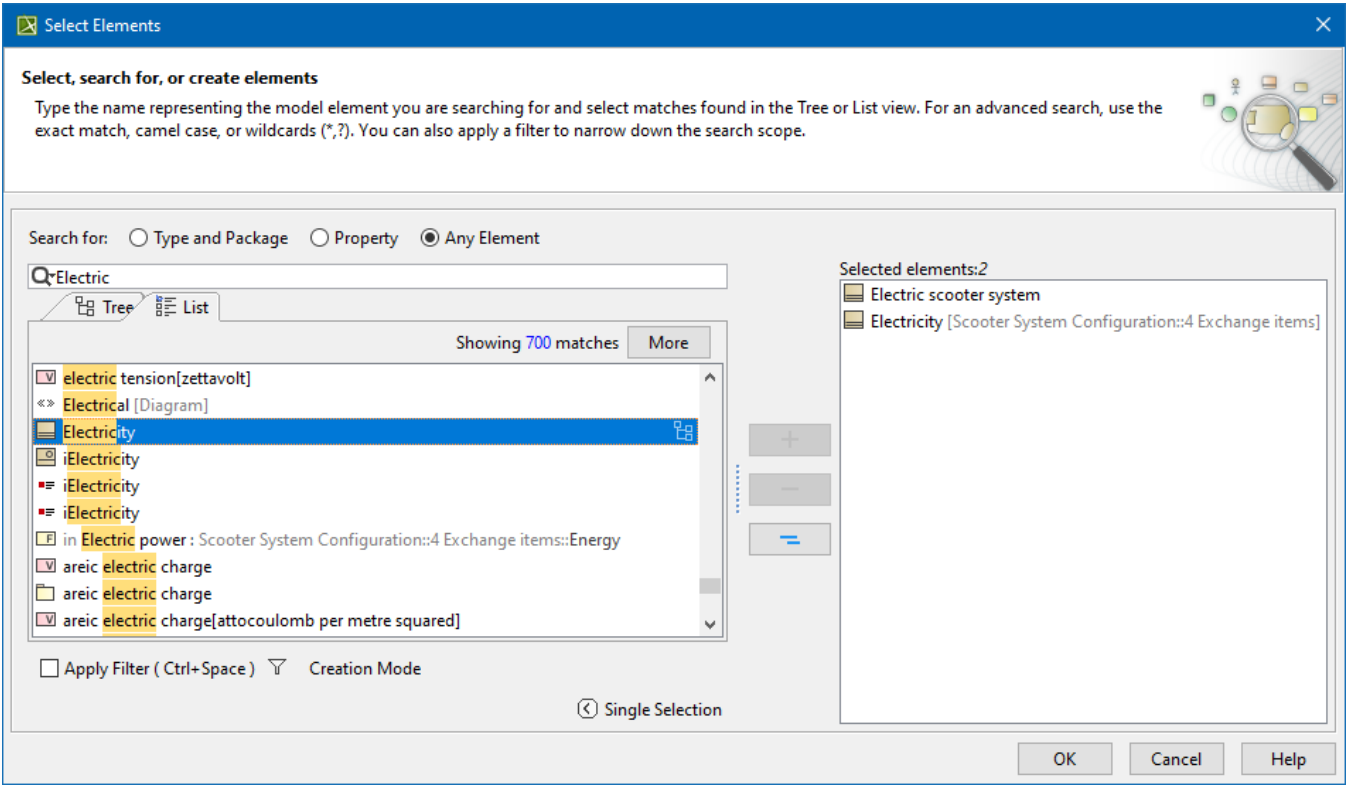
In the element Selection dia

Tree

List

Wait for indexing to complete to prevent slow search. [Search anyway.](#)

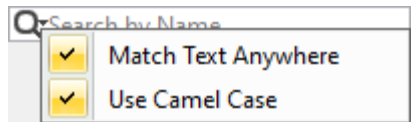



- Select one or more elements to assign them as property values.
- Search for an element.
- Create elements.
- Clone a selected element.



The Select Element dialog.



The table below describes the components of the **Select Element** dialog.

Dialog element name/image	Description
<b>Search for:</b> <ul style="list-style-type: none"><li>• Type and Package</li><li>• Property</li><li>• Any Element</li></ul>	Select one of the predefined element type filters to narrow down the search results: <ul style="list-style-type: none"><li>• <b>Type and Package</b> - select to search for types and packages only.</li><li>• <b>Property</b> - select to search for properties only.</li><li>• <b>Any Element</b> - select to search among all the elements in the model.</li></ul>

	<p>Click to customize the search options to optimize the search operation.</p> <p><b>Match Text Anywhere</b></p> <ul style="list-style-type: none"> <li>To search for a matching phrase in any part of the element name, click the command to add the check mark.</li> <li>To explicitly search from the beginning of the element name, click the command to remove the check mark.</li> </ul> <p><b>Use Camel Case</b></p> <ul style="list-style-type: none"> <li>To search for a matching phrase typed in a camel case, click the command to add the check mark.</li> <li>To search for a matching phrase typed in a regular case, click the command to remove the check mark.</li> </ul> <p>You can use camel case as follows:</p> <ul style="list-style-type: none"> <li>Type only the first letters (either capitalized or not) of each word, for example, "and" or "AND" to find "Analysis and Design".</li> <li>Type skipping spacers, for example, "cv3" to find "CV-3".</li> <li>Perform a partial search, for example, "ibd" to find SysML Internal Block diagram. Be sure the <b>Match Text Anywhere</b> command is checked!</li> </ul>
<p><b>More</b></p>	<p>Click the button to load the next 100 matches. By default, the first 100 matches are shown in the dialog.</p>
<p><b>Previous</b> ▲</p> <p><b>Next</b> ▼</p>	<div data-bbox="565 762 1481 840">  Available in the <b>Tree</b> view only. </div> <p>Click to navigate to a previous or next result.</p> <p>Alternatively, you can press the Shift + F3 keyboard shortcut to select the previous match or press F3 to select the next match.</p>
<p><b>Switch to Tree</b></p>	<p>Click to switch from the <b>List</b> to <b>Tree</b> view.</p> <p>Alternatively, press the Alt+B keyboard shortcut.</p>
<p><b>Apply Filter (Ctrl+Space)</b></p>	<p>Click to clear the check box if you need to remove the search scope filter. If you clear the <b>Apply Filter</b> checkbox once, your selection is remembered for the next time.</p>
<p><b>Filter Options</b></p> 	<p>Select to customize the filter options to narrow down the search scope.</p> <ul style="list-style-type: none"> <li><b>Hide Uncommon Elements</b> - reduces the search results list by hiding uncommon elements, keeping elements such as Interface, Association Class, Class, and Component in the list.</li> <li><b>Exclude Auxiliary Resources</b> - reduces the search results list by excluding elements marked as auxiliary. By default, elements in the standard/system profiles are marked as auxiliary. This option does not hide the following: <ul style="list-style-type: none"> <li>UML datatypes (placed under MagicDraw Profile) and UML2 Metamodel (placed under UML Standard profile) only for UML project.</li> <li>UML2 Metamodel, SysML value types, and stereotypes for SysML project.</li> <li>Elements with &lt;&lt;ignoreAuxFilter&gt;&gt; stereotype applied and all its elements recursively. <a href="#">How to apply stereotype &gt;&gt;</a></li> </ul> </li> <li><b>Filter by Package Imports</b> - reduces the search results list by showing elements from the imported packages only.</li> </ul> <div data-bbox="605 1539 1481 1617">  Available for the usage element only, i.e., when selecting the type/behavior for properties/actions. </div>
<p><b>Creation Mode</b></p>	<p>Click to turn on the element creation mode.</p>
<p><b>Create</b></p>	<p>Click to create a new element.</p>
<p><b>Clone</b></p>	<p>Click to clone the selected element.</p>
<p><b>Single Selection/Multiple Selection</b></p>	<p>Click to expand or collapse to select a single element or multiple elements.</p>

When searching for an element, type the search phrase in the Search By Name box. The following table describes the search types that can be used.

Search Type	Description
-------------	-------------

<b>Simple search in the List and Tree views</b>	<p>In the <b>Search by Name</b> box, type a phrase to search for element names. Elements matching the search phrase will be displayed in the <b>List</b> or <b>Tree</b> view.</p> <p>When switching between element selection views, the selected elements are remembered. That is, if the element is selected in the <b>Tree</b> view, it will be selected in the <b>List</b> view as well.</p>
<b>Search using wildcard cards</b>	<p>In the <b>Search by Name</b> box, type a phrase using the following wildcard characters:</p> <ul style="list-style-type: none"><li>• “*” substitutes any range of characters. So if your search phrase is “*dd”, all the elements containing “dd” in their names can be found. For example, “Address” and “ThreadDeath”.</li><li>• “?” substitutes exactly one character. So if your search phrase is “?dd”, only the elements with “dd” in their names starting from the second character can be found. For example, “Address”. “ThreadDeath” cannot be found in this case, because it contains more than one character before the search phrase “dd”.</li></ul> <div> <b>Match Text Anywhere command</b> Be sure the <b>Match Text Anywhere</b> command is unchecked, when using wildcard characters! Click  to find the command.</div>

**Related pages**

- [Elements multiple selection](#)
- [Creating new elements](#)
- [Cloning selected element](#)
- [Hide Uncommon Elements filter](#)
- [Filter By Package Imports filter](#)