

Resource Manager

On this page

- [Working with the Resource/Plugin Manager](#)
- [Adding resources from a file](#)
- [Distributing resources using .rdzip](#)
- [Building your own custom resources file](#)

Resource Manager functionality allows you to manage local resources (installed with a modeling tool or downloaded separately) and the resources available on the server/shared repository.

With the Resource Manager, you can manage different types of resources, such as Profiles, Plugins, Templates, Language resources, Case studies /Samples, Custom diagrams, and others.

The Resource Manager functionality allows you to:

- Install the resources
- Update the resources
- Distribute needed resources internally (including the company's developed resources)
- Check dependency of a resource

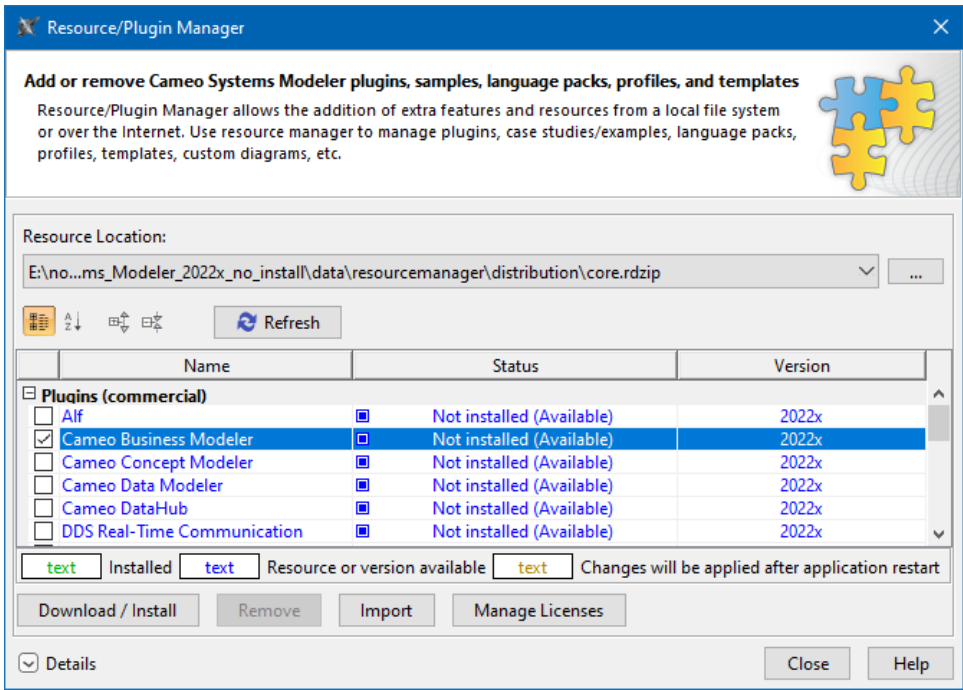
The **Resource/Plugin Manager** helps you manage the resources. You can add the resources to your modeling tool from the following locations:

- Local file system/network share
- Webserver

Working with the Resource/Plugin Manager

To open the Resource/Plugin Manager dialog

- From the **Help** menu, select **Resource/Plugin Manager**.



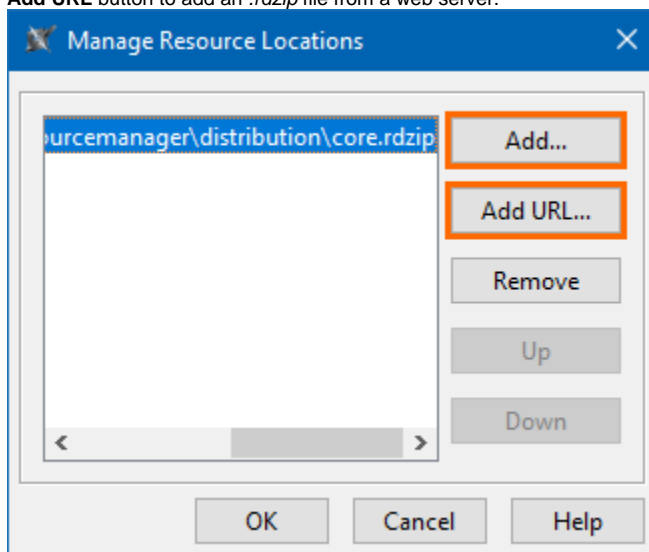
The Resource/Plugin manager dialog.

To add resources from an .rdzip file on a local file system, network share, or a web server

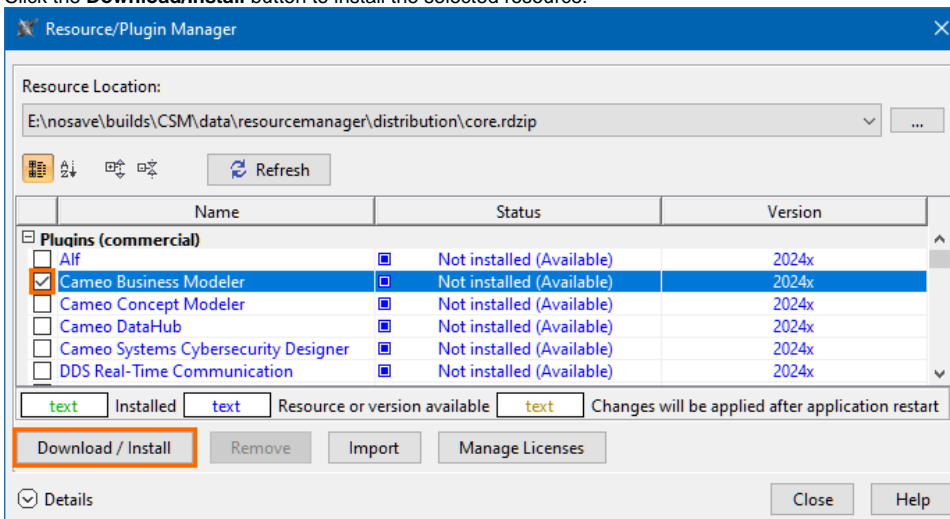
The core.rdzip file containing all available resources is added automatically to the **Resource/Plugin Manager** by default.

1. In the **Resource Location** section, click the [...] button. The **Manage Resource Locations** dialog opens. Click one of the following:
 - a. **Add** button to add an .rdzip file from a local file system or network share.

- b. Add **URL** button to add an *.rdzip* file from a web server.



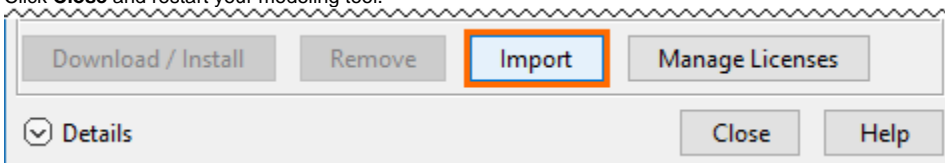
2. The file selection/URL dialog opens. Specify the location/URL of the *.rdzip* file and click **Open**.
3. Click **OK**. The resources of the file are loaded.
4. Select the check box of the resource you want to install.
5. Click the **Download/Install** button to install the selected resource.



6. Click **Close** and restart your modeling tool.

To add resources from a *.zip* file on a local file system or network share

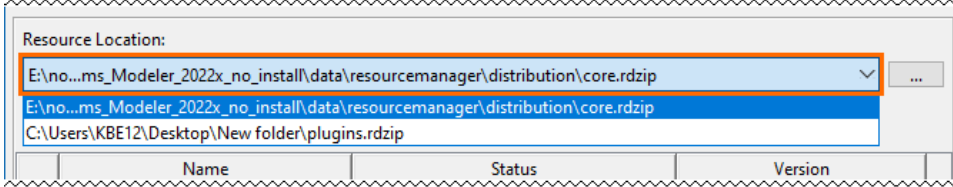
1. Click the **Import** button. The file selection dialog opens.
2. Specify the location of the *.zip* file and click **Open**. The plugin is extracted and installed automatically.
3. Click **Close** and restart your modeling tool.



To browse added resource locations

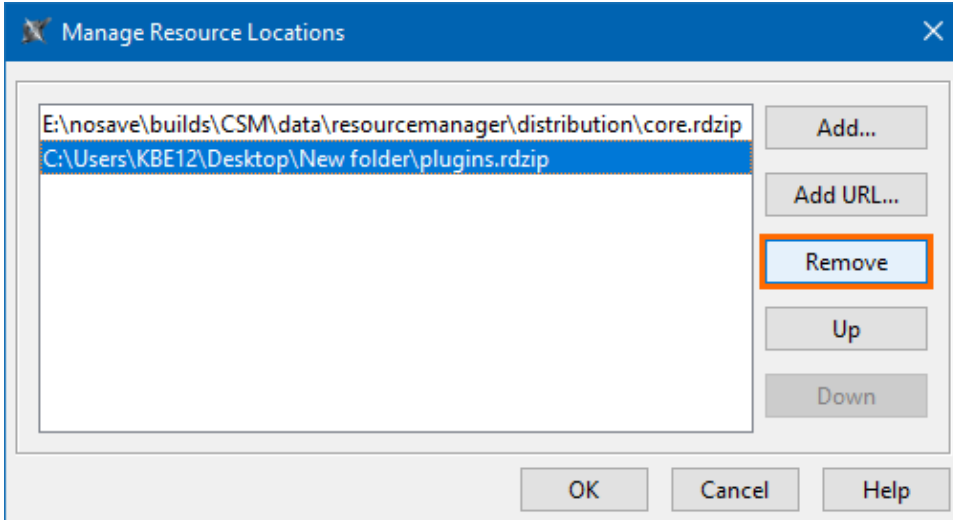
1. In the **Resource/Plugin Manager** dialog, click on the **Resource Location** selection.

2. Select the resource location from the drop-down menu. The resources are added to the **Resource/Plugin Manager** from the added resource file.



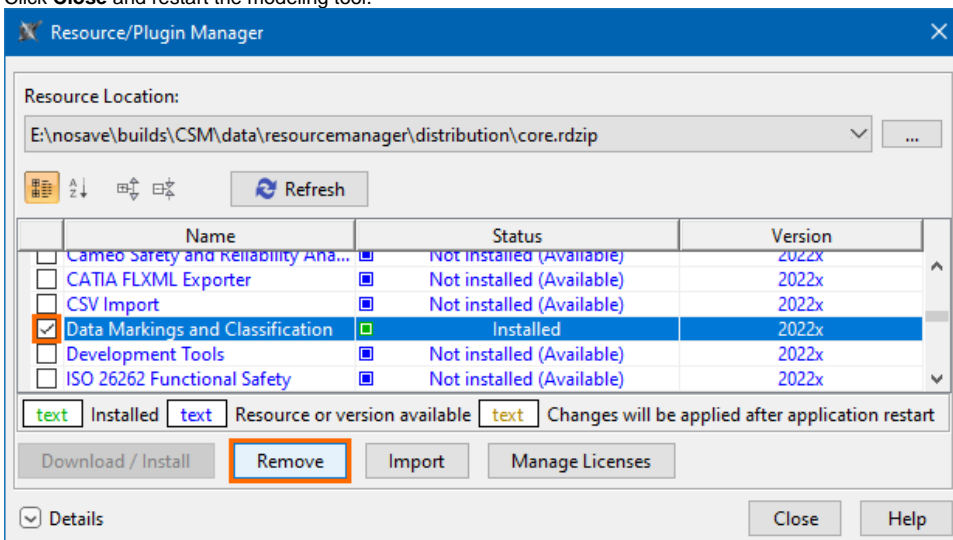
To remove a resource location

1. In the **Resource Location** section, click the [...] button. The **Manage Resource Locations** dialog opens.
2. Select the resource location you want to remove.
3. Click the **Remove** button. Click **OK**.



To uninstall a resource

1. Select the check box of the resource you want to uninstall.
2. Click the **Remove** button.
3. Click **Close** and restart the modeling tool.



To see the resource details and/or check the dependency of a resource

1. Select the check box of the resource whose details you want to view.
2. Click **Details**. The dialog expands with the resource description at the bottom.

The screenshot shows the 'Details' tab of the Resource/Plugin Manager. At the top, there are buttons for 'Download / Install', 'Remove', 'Import', and 'Manage Licenses'. Below these is a 'Details' button (highlighted with an orange box) and 'Close' and 'Help' buttons. A list of resources is shown below, with 'Data Markings and Classification' selected (checked box). Below the list, there is a status bar showing 'Installed' and 'Resource or version available'. The main area displays the details for 'Data Markings and Classification', including its name, home page, provider, size, and date. A 'Description' section follows. At the bottom, a 'Required' section is highlighted with an orange box, showing a table of required resources.

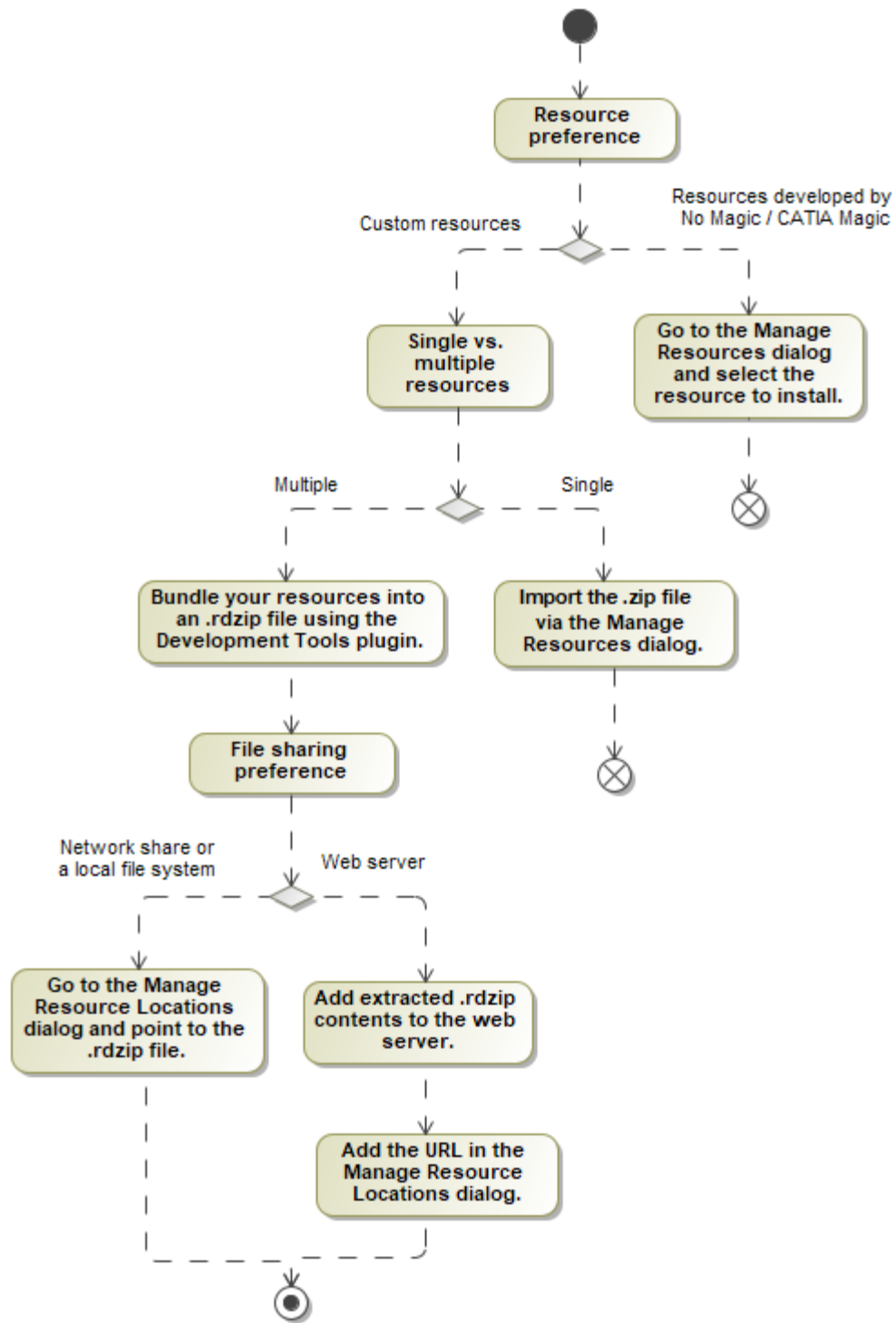
Name	Required	Status
Required resources	Variability Core 2022x or higher	All installed

3. If the resource has dependencies, they are displayed in the **Required** compartment.

Adding resources from a file

The pre-bundled resource distribution file *core.rdz* is bundled with every modeling tool. It is located at `< installation_directory > / data / resourcemanager / distribution >`. The file is automatically added to the **Resource/Plugin Manager** by default.

There are multiple ways to install resources using the **Resource/Plugin Manager**, which depends on your needs and preferences. See the image below.



Visualization of the Resource/Plugin Manager workflow.

To learn more about plugin installation options, see the [Installing plugins](#) page.

Distributing resources using .rdzip

Once you have the resource distribution file (.rdzip), you can share resources internally, e.g., on a company level.

The resource distribution file (.rdzip) contains the resources and their descriptor file. If you are using the web server for resource distribution, make sure that the resource distribution file (.rdzip) is extracted into the intended server location.

Building your own custom resources file

You can bundle your resources into one *.rdzip* file and then distribute that file on a local file system, network share, or web server.

To build the resources file, you need to install the **Development Tools** plugin. The **Development Tools** plugin can be downloaded individually and then installed using **Resource/Plugin Manager**, or it can be found in the resource distribution file (*.rdzip*).



For more information about building the resource distribution file, read [Building a resource distribution file](#).

Related pages

- [Distributing custom diagrams](#)
- [Distributing Resources](#)
- [Distributing Profiles](#)
- [Building a resource distribution file](#)