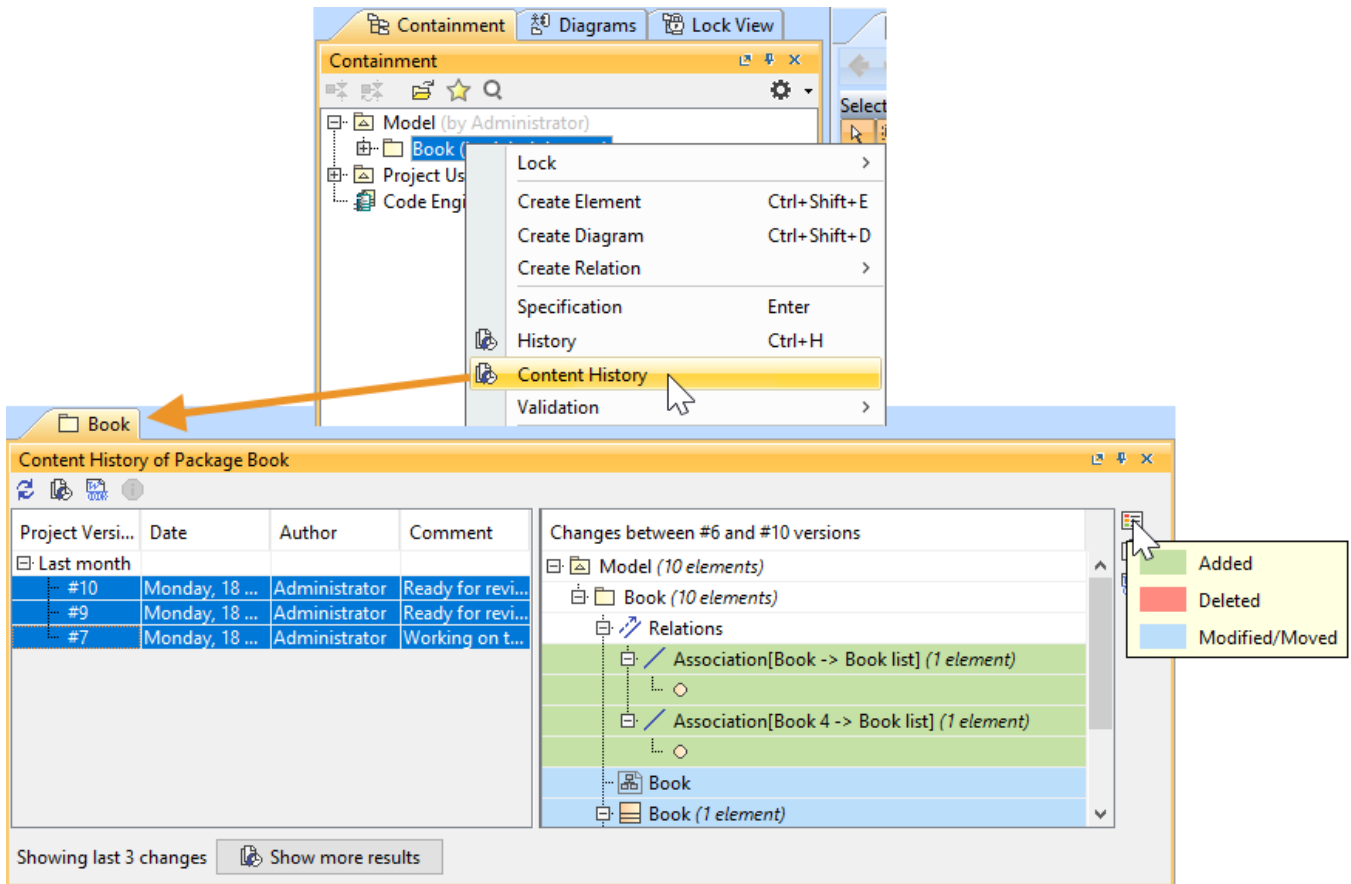


# Reviewing content history


You can view changes in the model in a particular scope at the element level; that is, a selected package or a classifier element (a composed element). The ability to see the history of a selected [Block](#), [Requirement](#), or another composed element is a big benefit for system engineers.



History of element changes in the scope of a *Book* package.

In the history review panel, you can see various details about the changes between selected versions, such as the list of elements that was changed, when changes were made, and who made changes. Different colors describe if a particular model element is added, deleted or modified. You can also export the content history of changes to a report in a *docx* format.

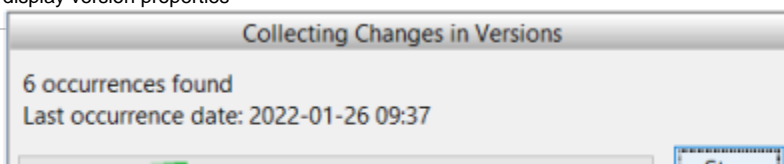
To view the changes of a particular project scope

1. Select a composed element in the [Containment tree](#) or diagram pane and right click it.
2. From the shortcut menu, select **Content History**. The history review panel opens, where you can analyze changes between selected server project versions.
3. To see differences between server project versions:
  - Double click the project version to see differences between the selected version and the earlier one.
  - Select the list of versions and click the  button.

## Stopping collecting changes

If retrieving the content history takes too much time, you can click the **Stop** button to complete reviewing changes through versions of the selected composed element.

To display version properties

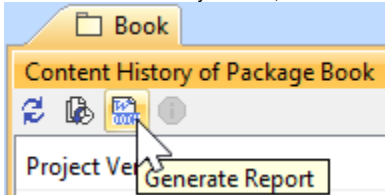


ect the **Version Properties** command.

 The button is disabled if either no version or multiple versions are selected.

To generate the content history report

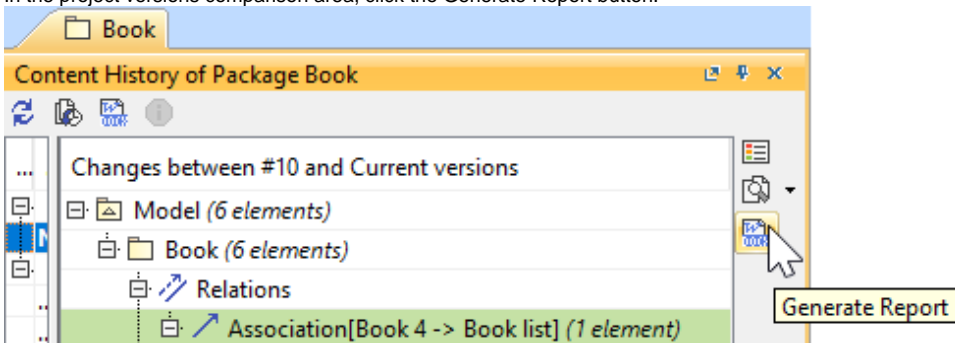
1. Open the **Content History** panel.
2. On the Content History toolbar, click the Generate Report button.




3. The **Save As** dialog opens to specify the location of a report file.

To generate a project Comparison report (Differences report)

1. Open the **Content History** panel.
2. In the project versions comparison area, click the Generate Report button.



3. The **Save As** dialog opens to specify the location of a report file.

 In a Differences report you can find project scope and element scope:

- Related pages**
- [Project scope](#) – name, version, the number of elements and diagrams in the compared project versions.
  - [Element scope](#) – name, path and element type of the particular model element that was chosen as a content history scope.
  - [Analyzing comparison results](#)
  - [Reviewing model history](#)

This Differences report compares the EulSdt report only includes changes from the chosen model element scope and not the entire model. These changes are included in the sections **Diagram Differences**, **Model Differences**, and **Changes by Type** of the report.