

# P4 Resource Functions

## Description

The P4 Resource Functions view addresses resource (human and non-human) functions – i.e. the activities performed by Resources.

The primary purposes of the P4 view are to:

- Develop a clear description of the necessary data flows that are input (consumed) by and output (produced) by each resource.
- Ensure that the functional connectivity is complete (i.e. that a resource's required inputs are all satisfied).
- Ensure that the functional decomposition reaches an appropriate level of detail.
- Provide implementation-specific realizations of the operational activities specified in the [L4 - Logical Activities](#) view.

The Functionality Description provides detailed information regarding the:

- Allocation of functions to resources.
- Flow of data between functions.

The P4 view is the systems view counterpart to the Activity Model ([L4](#)) of the operational view.

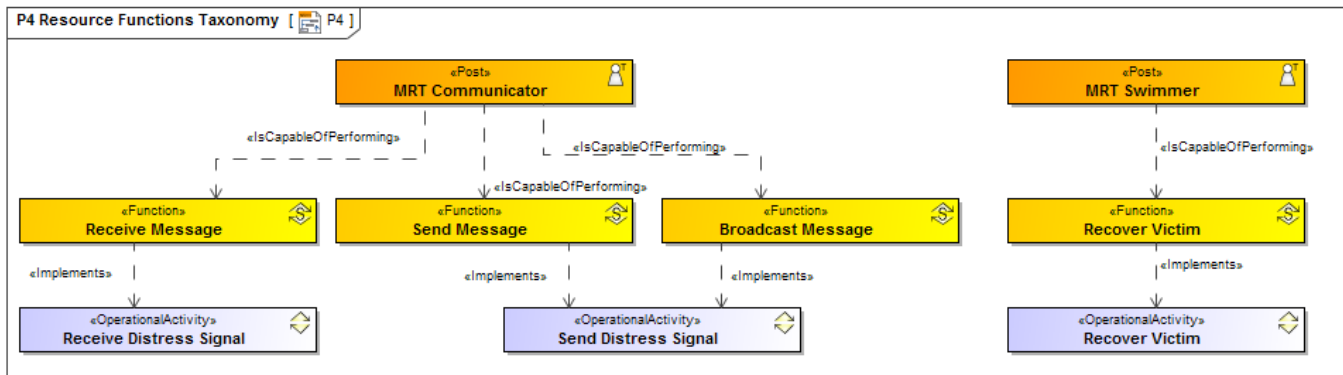
The P4 view may be used for:

- Description of task workflow.
- Identification of functional system requirements.
- Functional decomposition of systems.
- Relate human and system functions.

## Implementation

The P4 view can be represented using:

- P4 Resource Functions Taxonomy diagram for Function hierarchies. This diagram is based on the UML Class diagram.



- P4 Resource Functions diagram for Function flows. This diagram is based on the UML Activity diagram.



- [Natural Resource](#)

**Related procedures**

- [Creating P4 Resource Functions diagram](#)
- [Creating P4 Resource Functions Taxonomy diagram](#)
- [Creating L4-P4 Systems Function to Operational Activity Traceability Matrix](#)
- [Creating Resource Exchange in P4 Resource Functions diagram](#)
  
- [Resources to Capabilities Mapping matrix](#)
- [Creating Process Flow Diagrams From Compositions or Aggregations Defined in Process Diagrams](#)
- [Using Implied Relations](#)