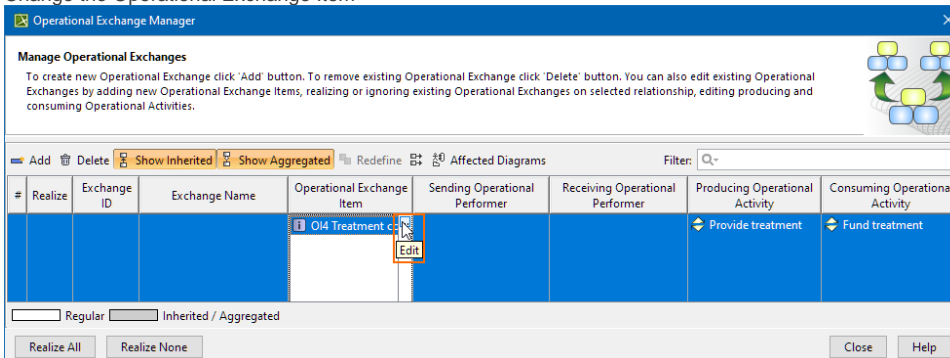


# Operational Exchange Manager dialog


The **Operational Exchange Manager** dialog enables the analysis and management of the Operational Exchanges data. You can:

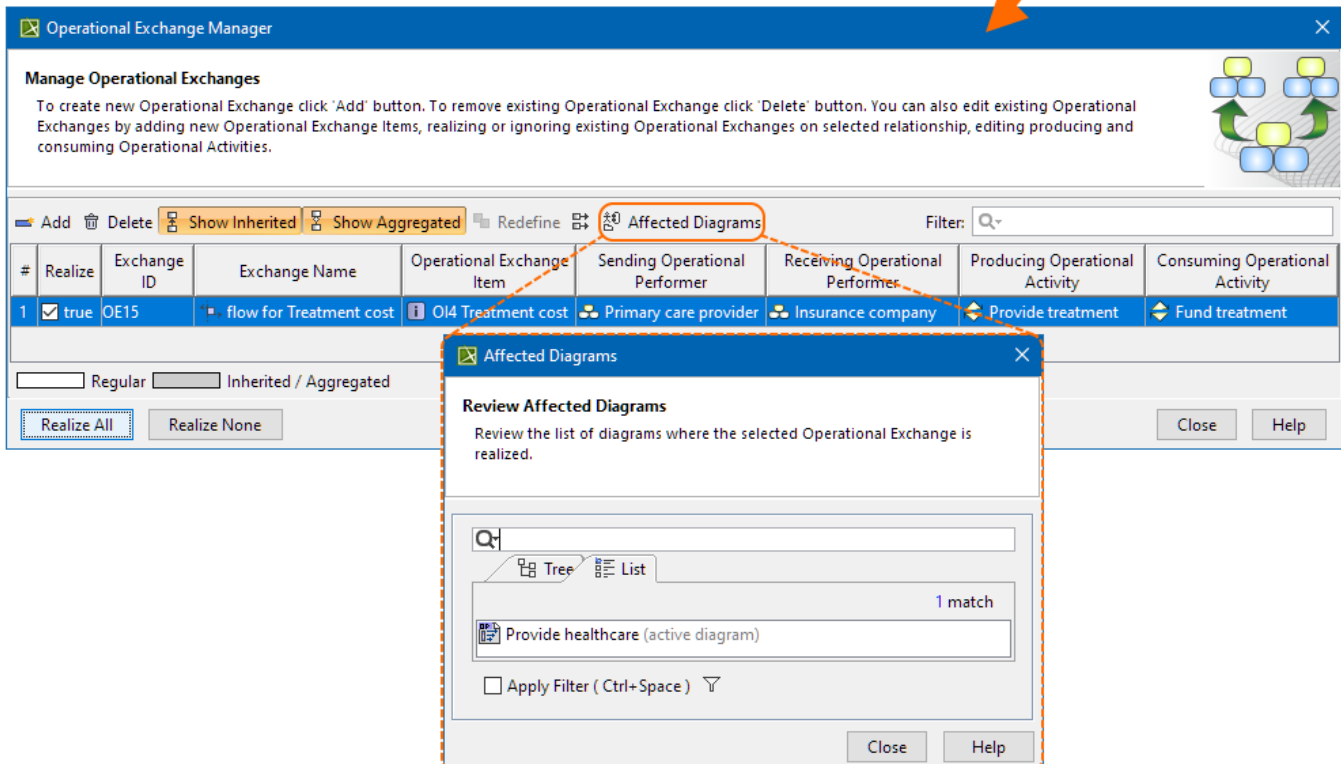
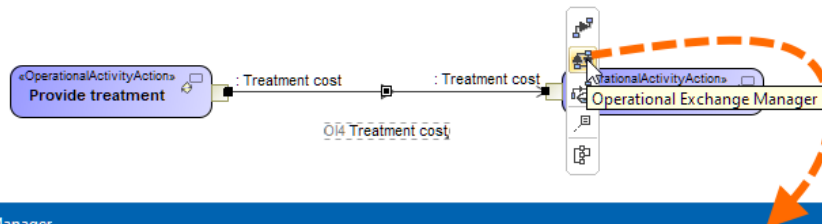
- Edit existing Operational Exchanges by adding new Operational Exchange Items
- Realize or ignore existing Operational Exchanges on selected relationships
- Change the Operational Exchange Item



- Review producing and consuming Operational Activity pairs and remove the ones that are not needed
- Review the list of diagrams that display the Realizing Elements of the selected Exchange

To open an **Operational Exchange Manager** dialog

1. Select an Association, Operational Connector, Operational Control Flow, Operational Object Flow, or Operational Message in the diagram pane.
2. On the smart manipulator, click . The **Operational Exchange Manager** dialog opens.



## Related procedures

- [Creating Operational Exchanges in L1 Node Types diagram](#)
- [Creating Operational Exchanges in L2 Logical Scenario diagram](#)
- [Creating Operational Exchanges in L4 Logical Activities diagram](#)
- [Creating Operational Exchanges in L6 Logical Sequence diagram](#)
- [Creating Operational Exchanges in OV-2 diagram](#)
- [Creating Operational Exchanges in OV-2 Internal diagram](#)
- [Creating Operational Exchanges in OV-5b diagram](#)
- [Creating Operational Exchanges in OV-6c diagram](#)
- [Realized Operational Exchange wizard](#)