

Resource Assignment Wizard

The **Resource Assignment Wizard** is used to define resource for the Version Of Configuration in specified time frame.

To open the **Resource Assignment Wizard**

1. Open a [SV-8](#) (DoDAF), SV-8 (MODAF), NSV-8 (NAF), [Pr](#) (NAF 4.0), or [Resource Evolution](#) (UAF)
2. On the diagram pane, right-click the Version Of Configuration and select **Resource**.
The **Resource Assignment Wizard** opens.

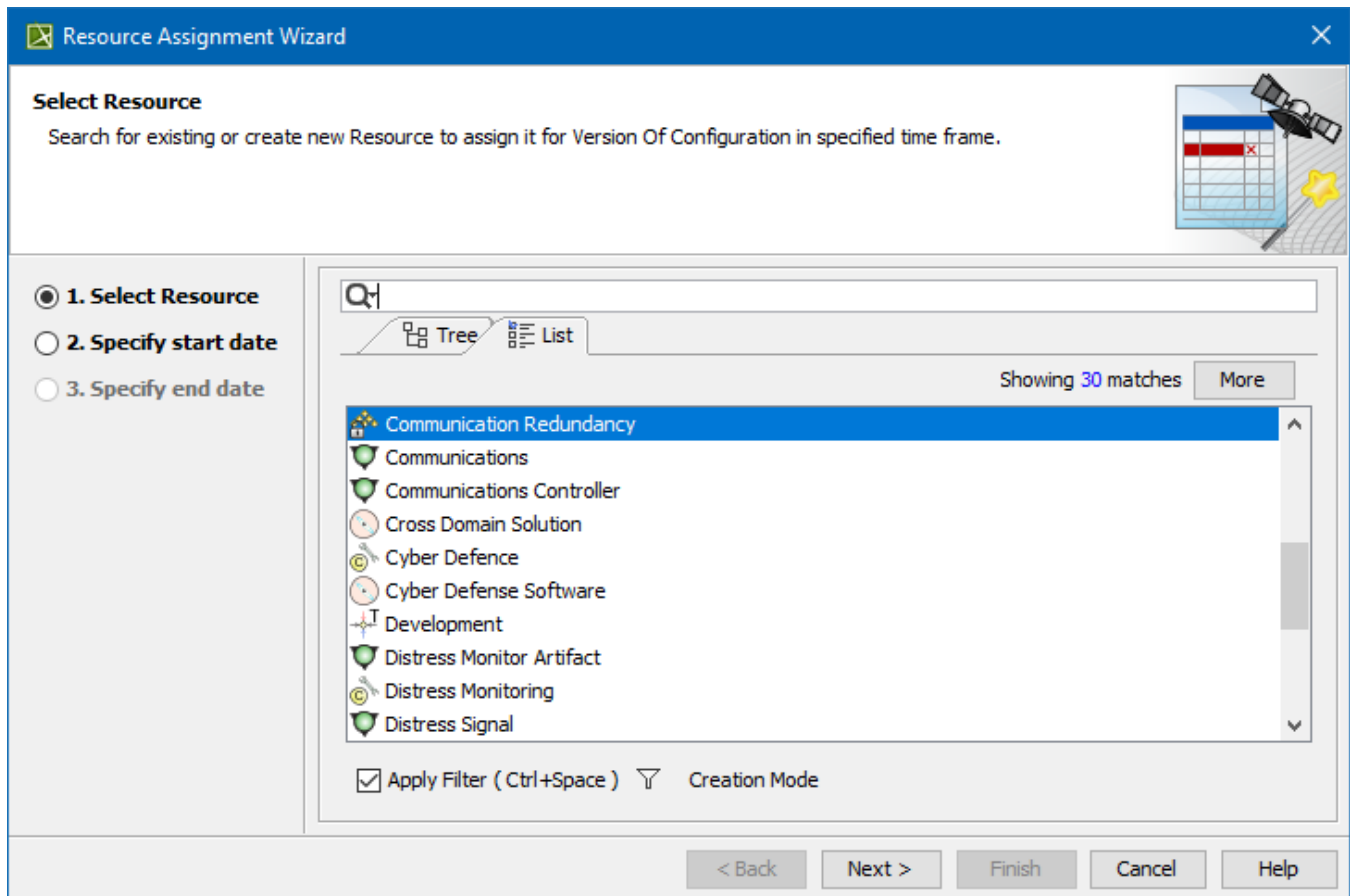
The wizard consists of three steps:

- 1 [Resource selection](#)
- 2 [Start date specification](#)
- 3 [End date specification](#)

Resource selection

In this step, you can select the existing or create new resource/Actual Resource that will be assigned for Version Of Configuration.

 If you select or create new resource, the corresponding Actual Resource will be created automatically.



To create a resource for the Version Of Configuration

1. In the **Select Resource** dialog switch on the **Creation Mode**.
2. Select package where you want to create a resource.
3. Click the **Create** button, choose a resource category **Security**, **Resources**, or **Business**, and select the desired resource.
4. In the Specification window of the newly created resource, type its name.

Start date specification

The Actual Project Milestone with Kind InService is created. Resource is assigned to the Actual Project Milestone.



Specify start date when selected Resource is being used in Version Of Configuration.



- ☐ 1. Select Resource
- ☒ 2. Specify start date
- ☐ 3. Specify end date

Select timeline:

 Timeline

Set the date and time:

2020-09-01

Change the date format:

YYYY-MM-DD

Date:

September 2020						
Sun	Mon	Tue	Wed	Thu	Fri	Sat
30	31	1	2	3	4	5
6	7	8	9	10	11	12
13	14	15	16	17	18	19
20	21	22	23	24	25	26
27	28	29	30	1	2	3
4	5	6	7	8	9	10

Date:

2020-09-01

Today

Time:

15:56:56

Now

Time zone:

+02:00

Default

[< Back](#)

[Next >](#)

Finish

Cancel

[Help](#)

The Actual Project Milestone with Kind OutOfService is created. Resource is assigned to the Actual Project Milestone.

Resource Assignment Wizard

Specify end date

Specify end date when selected Resource is being used in Version Of Configuration.



- ☐ 1. Select Resource
- ☐ 2. Specify start date
- ☒ 3. Specify end date

Select timeline:

Timeline ▼ ...

Set the date and time:

2021-09-01 ▼

Change the date format:

YYYY-MM-DD ▼

Date:

September 2021						
Sun	Mon	Tue	Wed	Thu	Fri	Sat
29	30	31	1	2	3	4
5	6	7	8	9	10	11
12	13	14	15	16	17	18
19	20	21	22	23	24	25
26	27	28	29	30	1	2
3	4	5	6	7	8	9

Date:

2021-09-01 ▼

Today

Time:

15:59:21 ▼

Now

Time zone:

+02:00 ▼

Default

< Back

Next >

Finish

Cancel

Help