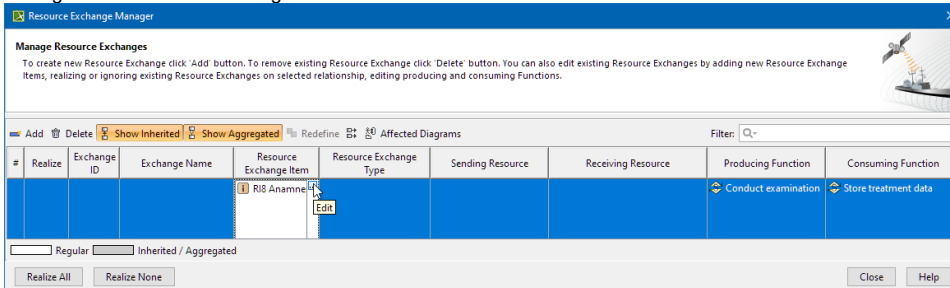


# Resource Exchange Manager dialog


The **Resource Exchange Manager** dialog enables the analysis and management of the Resource Exchange data. You can:

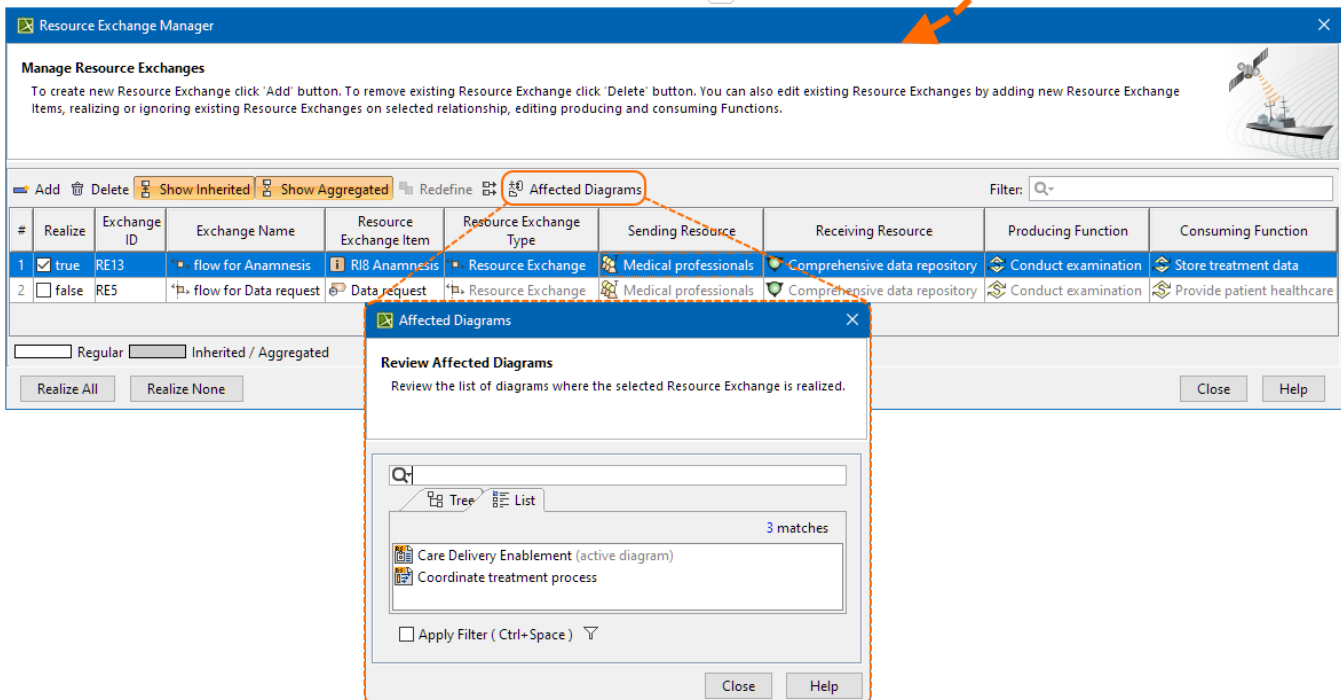
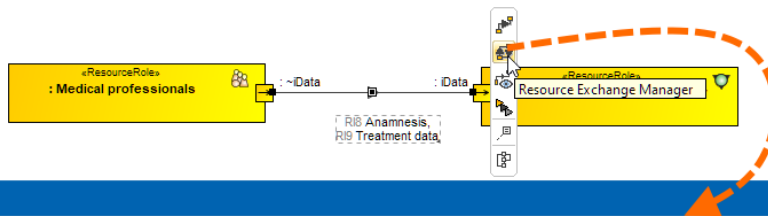
- Edit existing Resource Exchanges by adding new Resource Exchange Items
- Realize or ignore existing Resource Exchanges on selected relationship
- Change the Resource Exchange Item



- Review producing and consuming Function pairs and remove the ones that are not needed
- Review a list of diagrams that display the Realizing Elements of the selected Exchange

To open the **Resource Exchange Manager** dialog

1. Select Resource Connector, Association, Function Control Flow, Function Object Flow, or Resource Message in the diagram pane.
2. On the smart manipulator, click . The **Resource Exchange Manager** dialog opens.



## Related procedures

- [Creating Resource Exchange in P1 diagram](#)
- [Creating Resource Exchange in P2 diagram](#)
- [Creating P3 table](#)

- [Creating Resource Exchange in P4 Resource Functions diagram](#)
- [Creating Resource Exchange in P6 diagram](#)
- [Creating Resource Exchange in SvcV-10c diagram](#)
- [Creating Resource Exchanges in SV-1 diagram](#)
- [Creating Resource Exchange in SV-1 Internal diagram](#)
- [Creating Resource Exchange in SV-2 Internal diagram](#)
- [Creating Resource Exchange in SV-2 diagram](#)
- [Creating Resource Exchange in SV-4 Systems Functionality Description diagram](#)
- [Creating Resource Exchange in SV-10c diagram](#)
- [Realized Resource Exchange wizard](#)