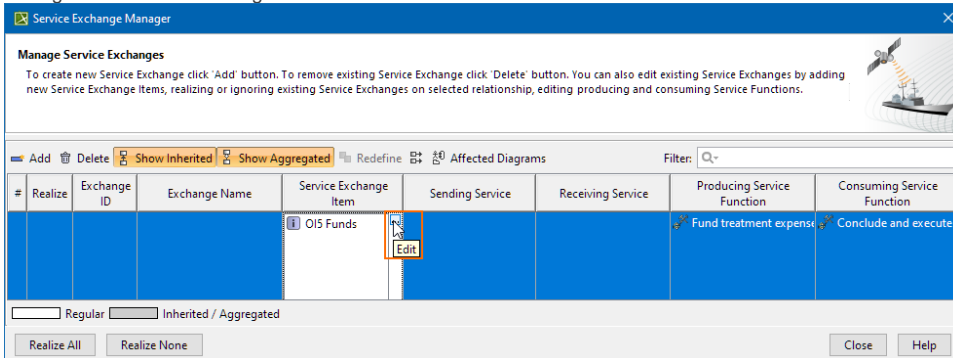


Service Exchange Manager dialog


The **Service Exchange Manager** dialog enables analysis and management of the Service Exchanges data. You can:

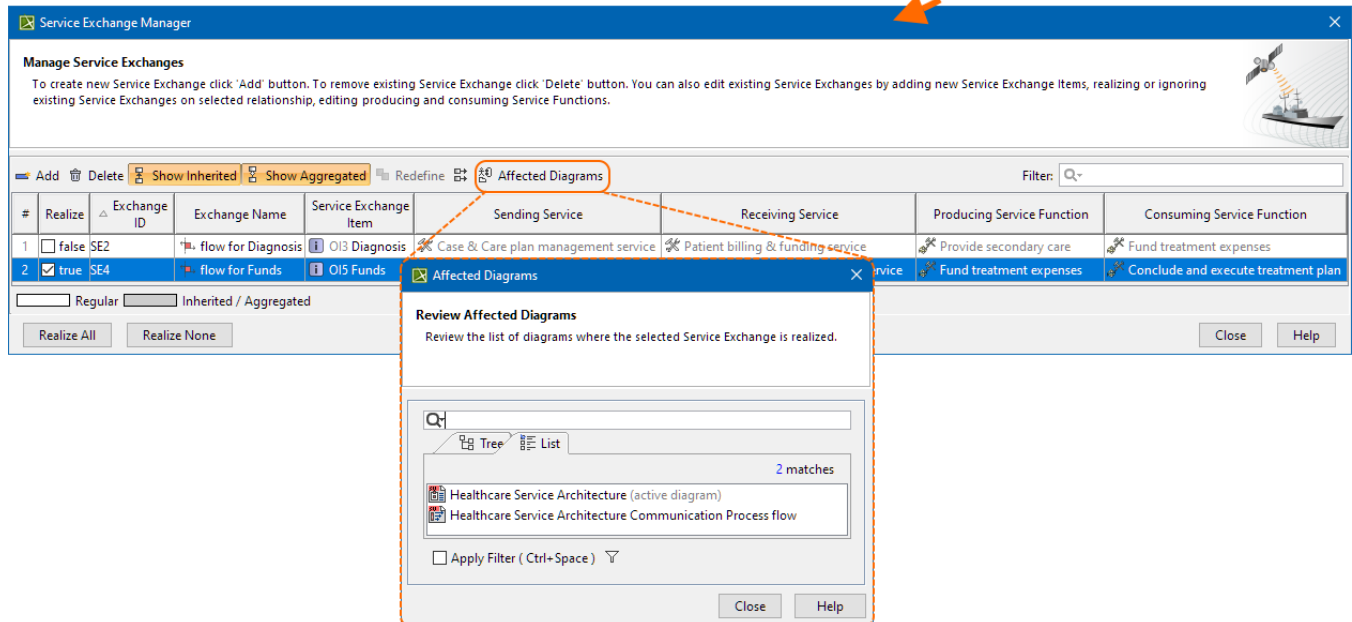
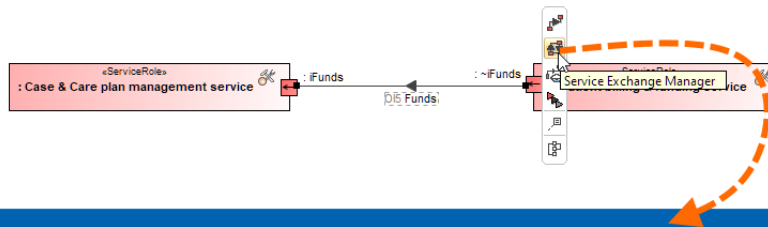
- Edit existing Service Exchanges by adding new Service Exchange Items
- Realize or ignore existing Service Exchanges on selected relationships
- Change the Service Exchange Item



- Review producing and consuming Service Function pairs and remove the ones that are not needed
- Review the list of diagrams that display the Realizing Elements of the selected Exchange

To open a **Service Exchange Manager** dialog

1. Select a Service Association, Service Connector, Service Control Flow, Service Object Flow, or Service Message in the diagram pane.
2. On the smart manipulator, click . The **Service Exchange Manager** dialog opens.



Related pages

- [Working with Services Connectivity diagram](#)
- [Realized Service Exchange wizard](#)
- [Producing and Consuming Service Functions dialog](#)