

UAF 1.1 to UAF 1.2. Mapping solutions and issues

On this page

- [Enduring Task removed](#)
- [Capability For Task removed](#)
- [Changes for properties of ActualEnterprisePhase](#)
- [Changes for properties of Desired Effect and Achieved Effect](#)
- [Consumes renamed](#)
- [Risk Owner removed](#)
- [Specializations of Capable Element updated](#)
- [Changes Property Types](#)
- [Changes for Whole Life Enterprise](#)

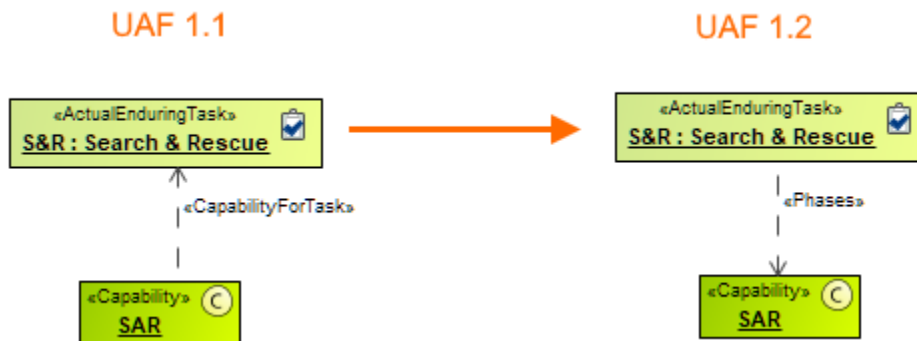
Enduring Task removed

The Enduring Task element was removed, so it became Strategic Phase after the migration.



Capability For Task removed

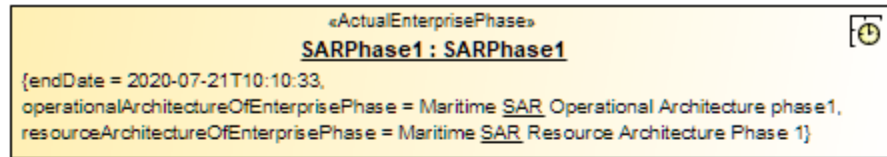
Capability For Task was removed, so after the migration, Capability For Task will be changed to Phases relationship (reverse).



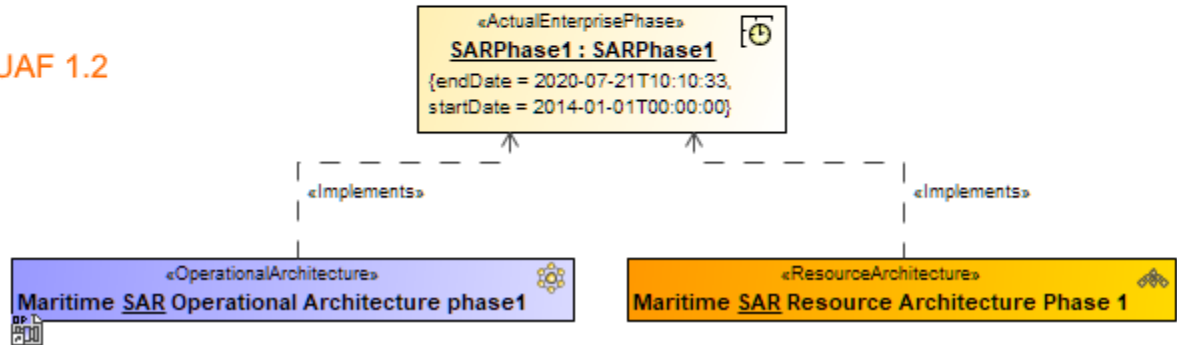
Changes for properties of ActualEnterprisePhase

- **Operational Architecture Of Enterprise Phase** property was removed, so after the migration Implements relationship will be created between *Actual Enterprise Phase* and *Operational Architecture* element.
- **Resource Architecture Of Enterprise Phase** property was removed, so after the migration Implements relationship will be created between *Actual Enterprise Phase* and *Resource Architecture* element.

UAF 1.1

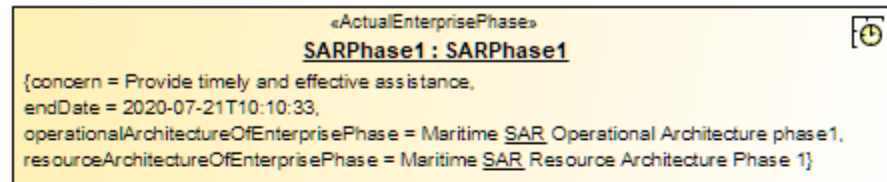


UAF 1.2

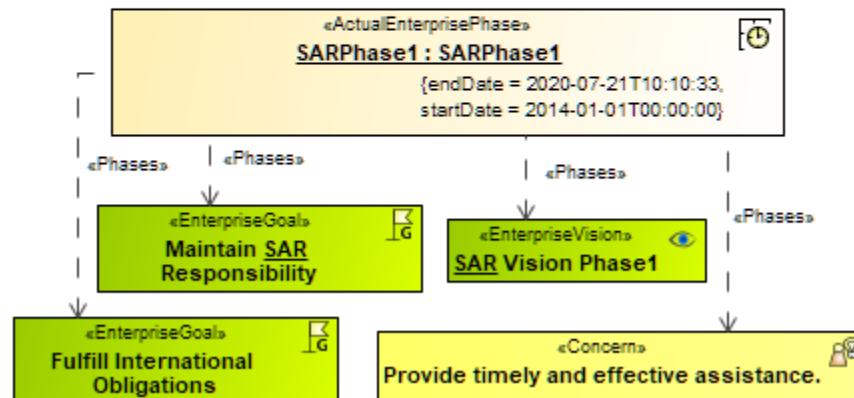


- **Vision** property was removed, so after the migration *Phases* relationship was created between *Actual Enterprise Phase* and *Enterprise Vision*
- **Goal** property was removed, so after the migration *Phases* relationship was created between *Actual Enterprise Phase* and *Enterprise Goal*
- **Concern** property was removed, so after the migration *Phases* relationship was created between *Actual Enterprise Phase* and *Concern*

UAF 1.1



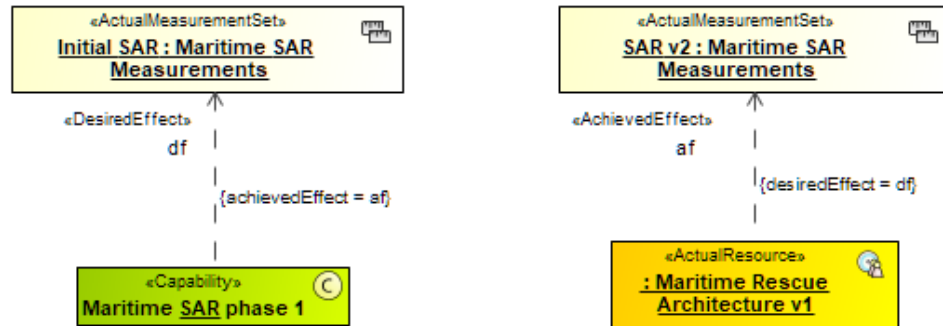
UAF 1.2



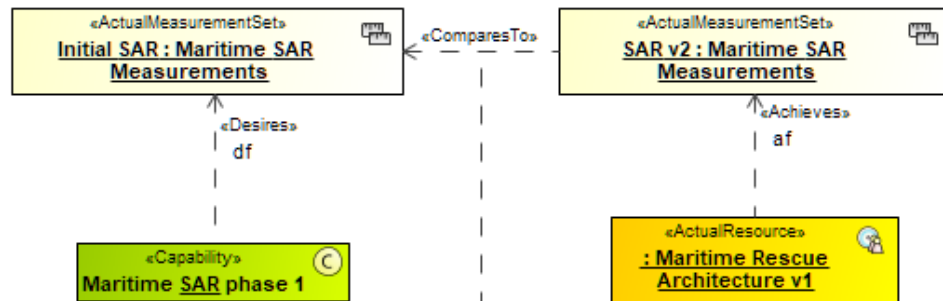
Changes for properties of Desired Effect and Achieved Effect

- AchievedEffect:: **desiredEffect** is removed.
- DesiredEffect:: **achievedEffect** is removed.
- After the migration, the *Compares To* relationship is created between **desires** target and **achieves** target if AchievedEffect:: **desiredEffect** and DesiredEffect:: **achievedEffect** were linked with each other.

UAF 1.1



UAF 1.2



To Do = "UAF 1.1:
Migrated from
Tag Desired Effect of Achieved Effect relationship = Desires:df[Maritime SAR phase 1 -> Initial SAR]
Tag Achieved Effect of Desired Effect relationship = Achieves:af[: Maritime Rescue Architecture v1 -> SAR]"

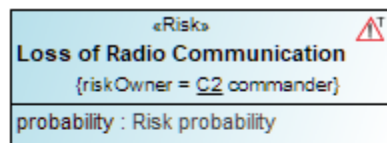
Consumes renamed

In UAF 1.2 Consumes relationship is renamed to Supports, and the direction is reversed.

Risk Owner removed

The Risk Owner property is removed, so after the migration, it will be added to the ToDo property in the Specification window of the Risk element.

UAF 1.1



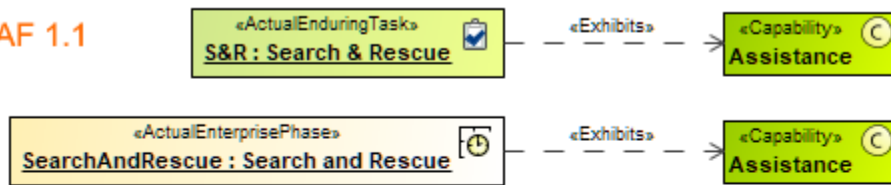
UAF 1.2



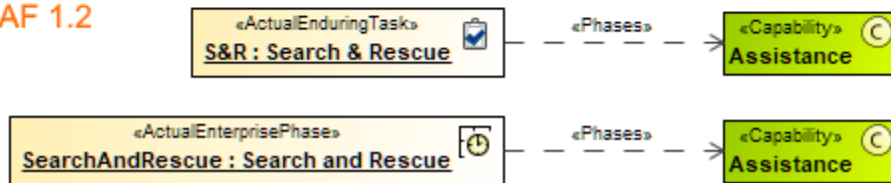
Specializations of Capable Element updated

In UAF 1.2 Actual Enterprise Phase and Actual Enduring Task are removed as specializations of Capable Element. If these elements have a relationship (Exhibits) with Capability, the Exhibits relationship was removed, and Phases will be created.

UAF 1.1



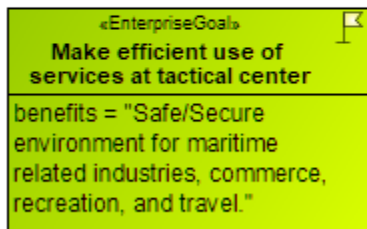
UAF 1.2



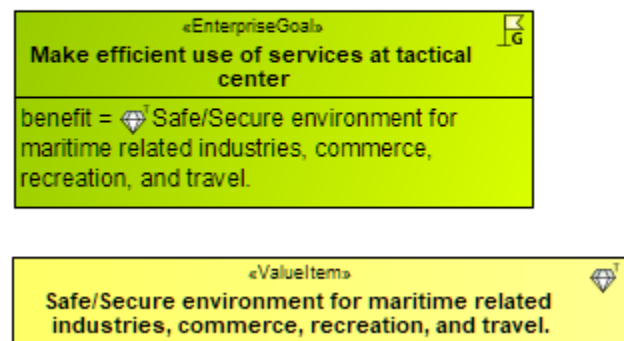
Changes Property Types

In earlier versions, the benefit property (owned by Enterprise Goal) was String. In UAF 1.2, the benefit property has a value Item for its value. After migration, a value item element will be created based on benefit value.

UAF 1.1



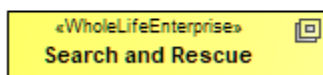
UAF 1.2



Changes for Whole Life Enterprise

In the earlier version, Whole Life Enterprise was Class. In UAF 1.2 Whole Life Enterprise will be Instance Specification. After migration, Whole Life Enterprise becomes Strategic Phase.

UAF 1.1



UAF 1.2

