

Modeling tools and plugins licensing

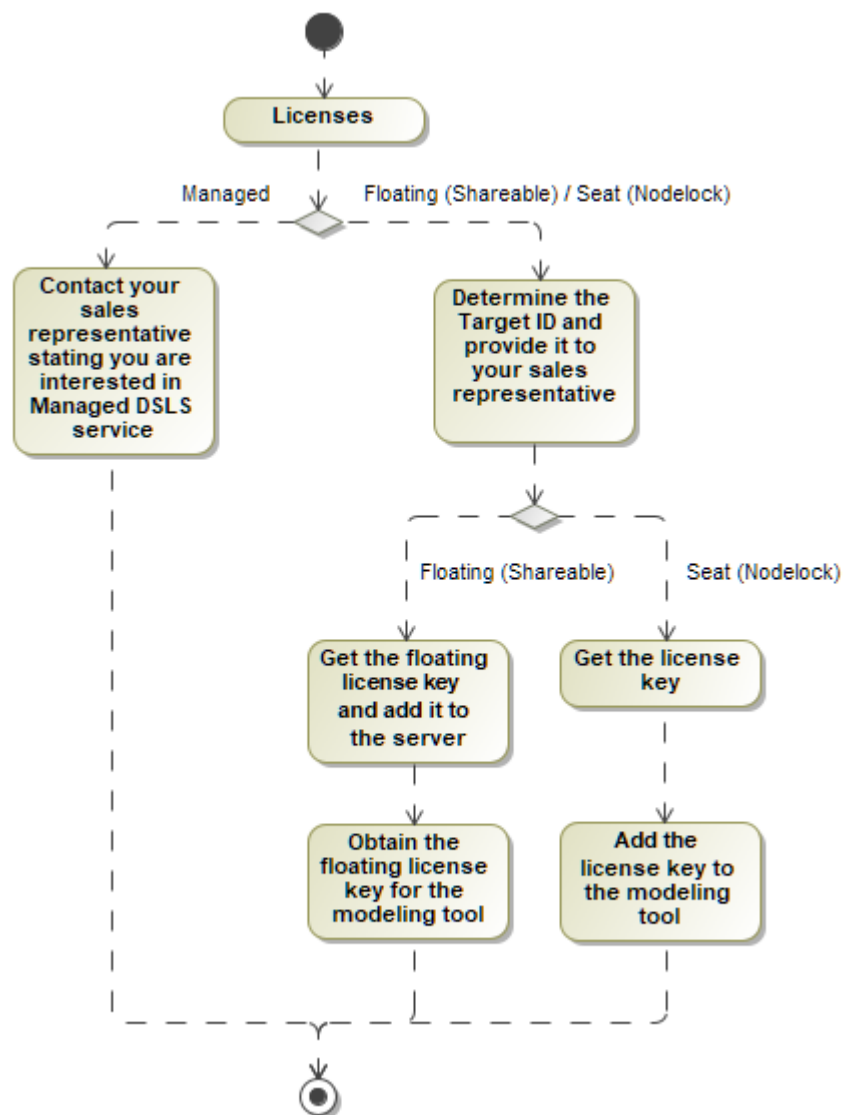
On this page

- [Licensing workflow](#)
 - [FlexNet Seat / DSLS Nodelock license](#)
 - [Floating license](#)
 - [Managed license](#)

The product license is identified by the license key. These are the types of license keys:

- FlexNet:
 - Seat
 - Floating
- DSLS:
 - Nodelock
 - Floating
 - Managed

Additionally, special licenses for the academic community are available: <https://www.nomagic.com/services/academic-research>.



Licensing scheme

Licensing workflow


FlexNet Seat / DSLS Nodelock license

1. [Determine your Target ID.](#)
2. Provide it to your sales representative.
3. Get a license key.
4. [Add a license key to the modeling tool.](#)

Floating license

FlexNet server license

1. [Determine server Host ID/Target ID.](#)
2. Provide it to your sales representative.
3. Get a floating license key and [add it to the floating license server.](#)

 Typically, this step is performed by the license server administrator.

4. [Obtain a floating license key for a modeling tool.](#)

DSLS server license

1. [Determine server Target ID.](#)
2. Provide it to your sales representative.
3. Get a floating license key and add it to the floating license server.
4. [Obtain a floating license key for a modeling tool.](#)

Managed license

Contact your Dassault Systèmes sales representative if you have an interest in Managed DSLS service. For more information, see the [Managed licensing](#) page.