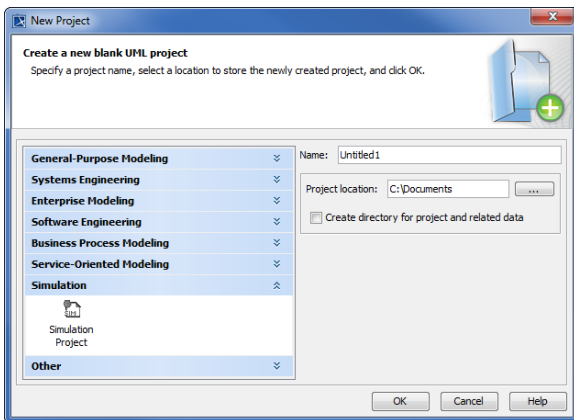


# Simulation project template

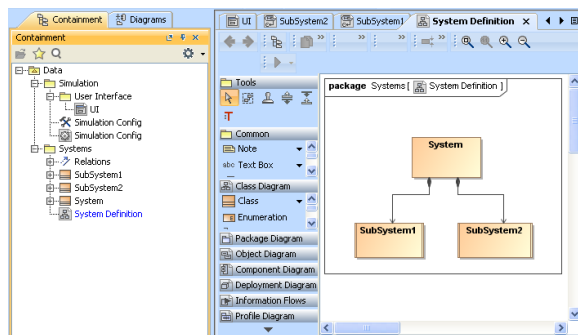
**Simulation Project** is a useful template that consists of fundamental diagrams and elements basically required for the user to work on a simulation project. The template significantly reduces time spent on working on the preparation of making simulation from scratch. The template is available in the **Simulation** project category in the **New Project** dialog.

To open a template

1. Click **File > New Project** on the MagicDraw main menu.
2. Select **Simulation > Simulation Project** in the **New Project** dialog.
3. Name your project, select its location, create a directory for the project, and click **OK**.



The Simulation Project template arranges basic and necessary diagrams represented by Class and Package diagrams including State Machine diagrams. The project template additionally encompasses Simulation Configuration to which a Simulation Target is set.



Simulation project template with the class and package diagrams.

## Related pages

- [Class diagram](#)
- [Package diagram](#)
- [State Machine diagram](#)
- [Simulation Configuration and UI modeling](#)