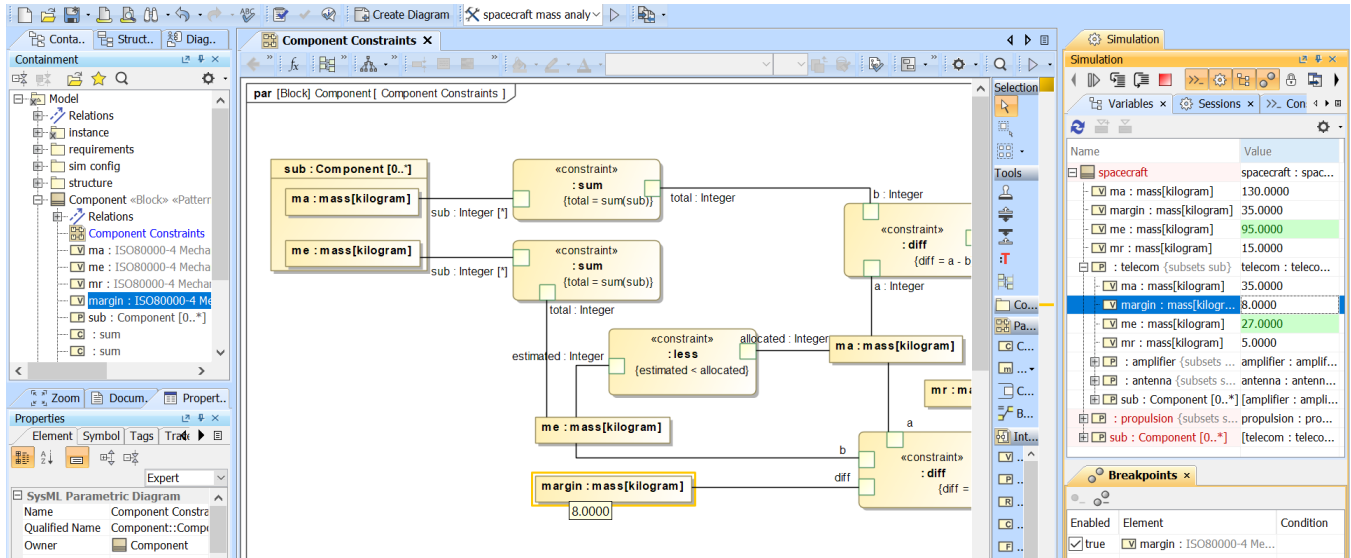


Parametric debugging

Simulation Toolkit allows debugging the Parametric diagram through [Breakpoints](#). It is especially helpful when working on projects with a large number of elements or parametric patterns that are applied recursively. Because the Parametric diagram usually runs at the maximum speed (without delay) regardless of the **Animation Speed** settings (see also [SimulationConfig](#)), you must set Breakpoints to monitor values.

In the figure below, Simulation pauses at the *margin* breakpoint in the Parametric diagram in which you can debug the model. You can also find the sample model of parametric debugging on the Welcome screen by going to the **Simulation** sample group and selecting **SpacecraftMassRollup**.



Debugging parameters of the SpacecraftMassRollup built-in sample.