

Generating an HTML table from a UI table, Time series chart, and CSV export configuration

On this page

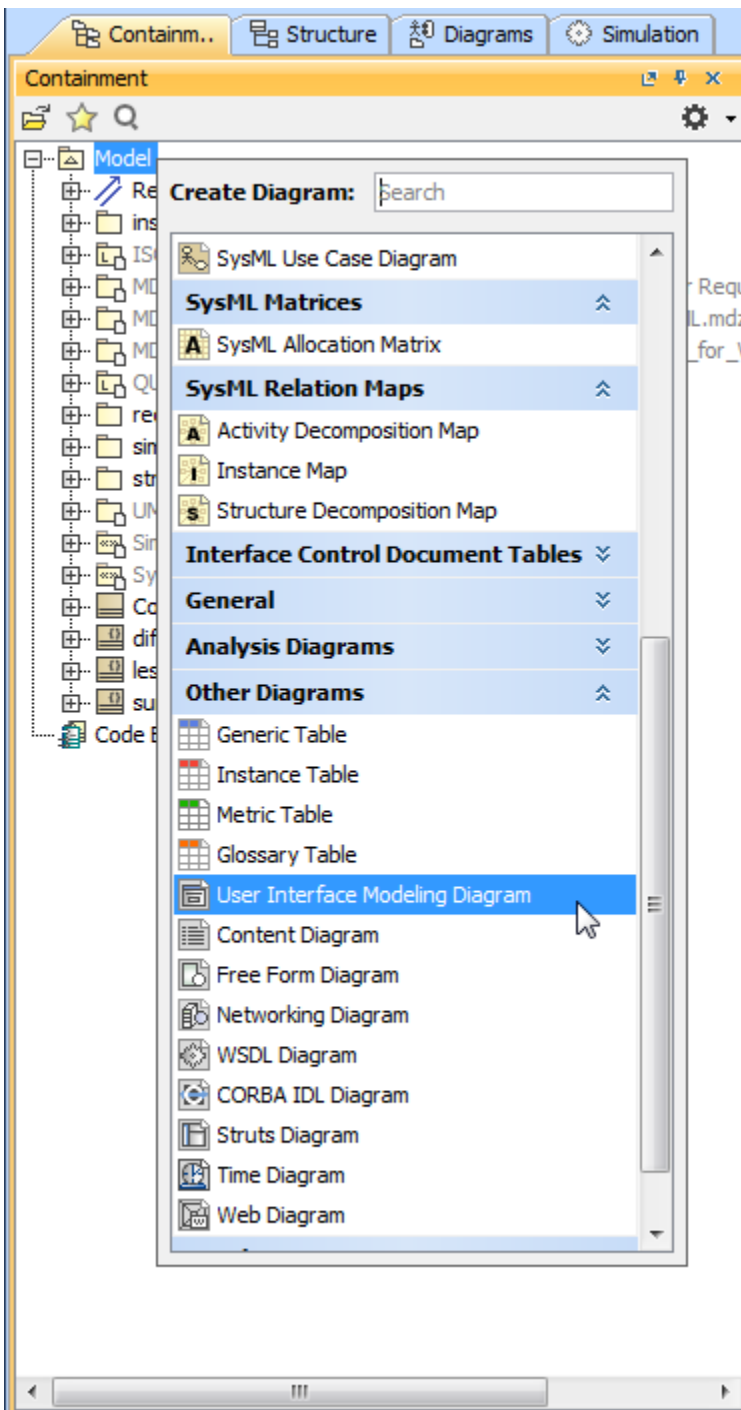
- [Generating an HTML table from a UI table](#)
- [Generating an HTML table from a Time series chart and CSV export configuration](#)

Generating an HTML table from a UI table

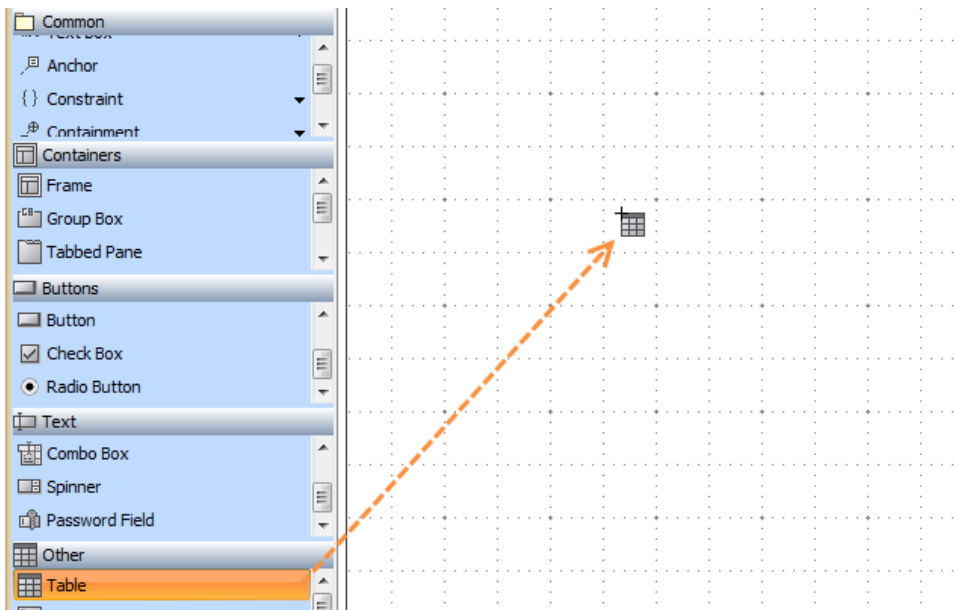
This feature of the Magic Model Analyst enables you to export MagicDraw HTML tables in UI modeling diagrams to HTML5, allowing them to be viewed in a web browser. The sample model used on this page, *SpacecraftMassRollup.mdzip*, demonstrates how to create a User Interface table in the User Interface Modeling diagram, generate HTML, run the simulation, and view the UI table in HTML5 in your web browser.

To generate an HTML table from a UI table component

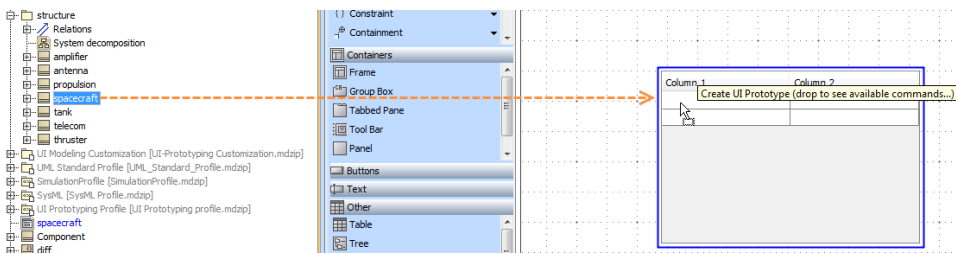
1. Open the `<modeling_tool_install_dir>\samples\simulation\SpacecraftMassRollup.mdzip` file.
2. Right-click the Model element in the containment tree. Select **Create Diagram > Other Diagrams > User Interface Modeling Diagram**.



3. Drag a UI table component onto the newly created diagram.

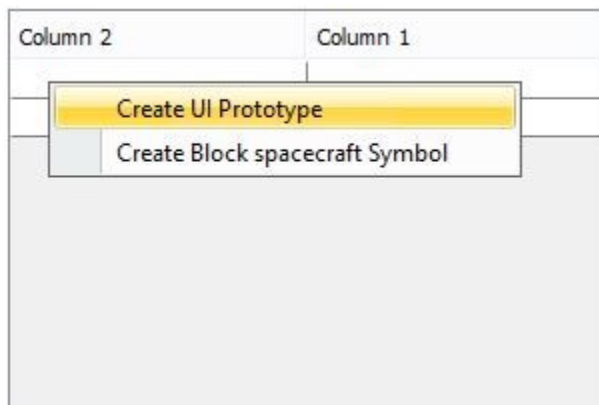


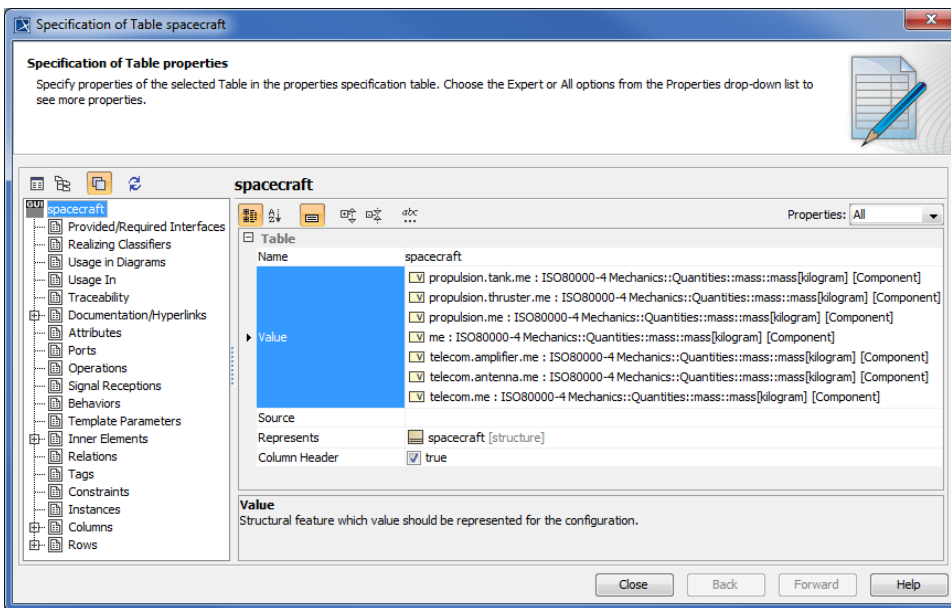
4. Drag the **spacecraft** Block from the **Structure** Package in the Containment tree to the table.



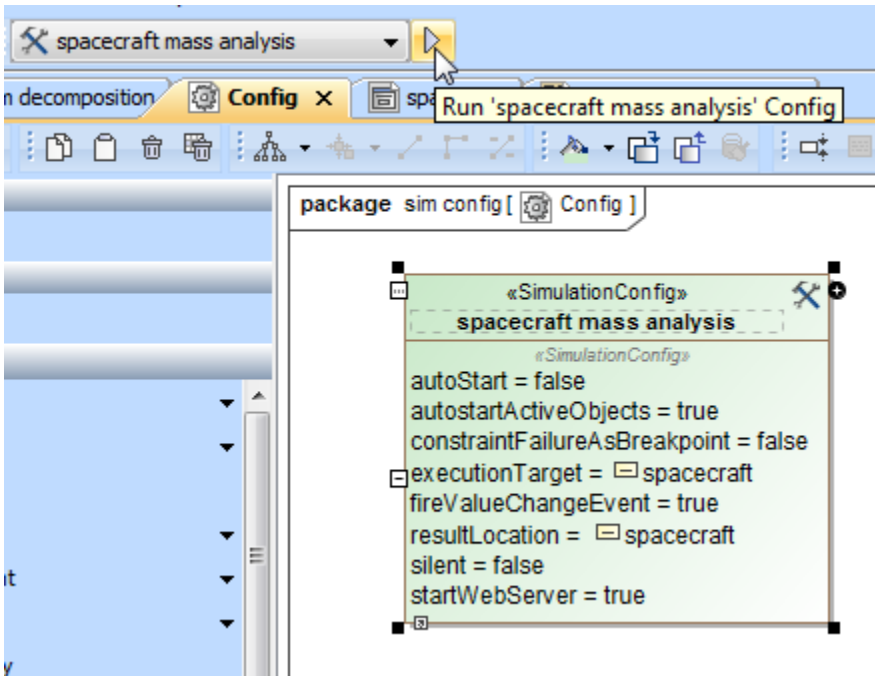
5. Select **Create UI Prototype**. The table headers will change from **Column 1** and **Column 2** to **Name** and **Value**.

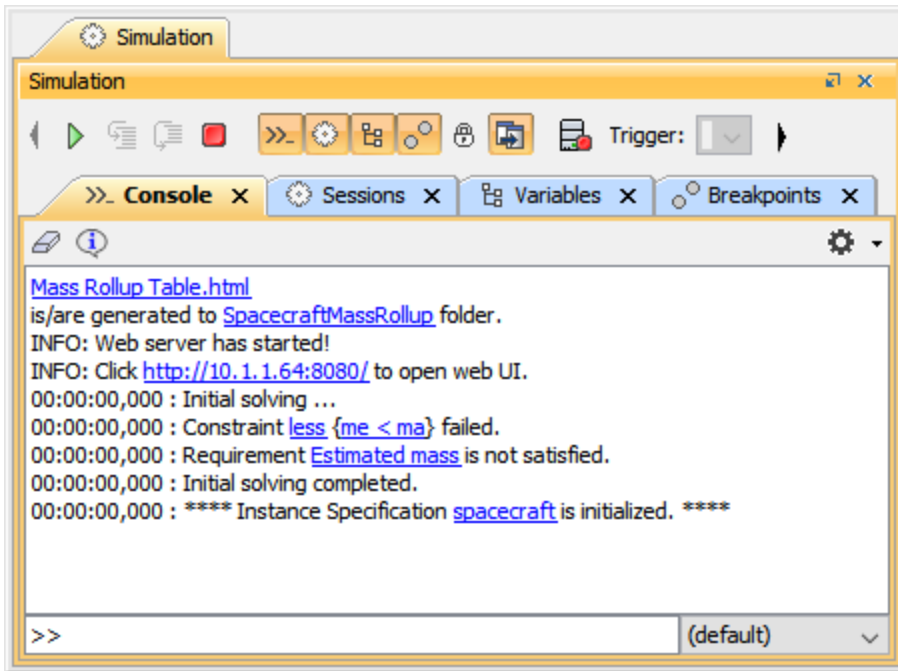
Tip
If you drag the **spacecraft** Block to the table quickly, the column name will change automatically, without having to select **Create UI Prototype**.



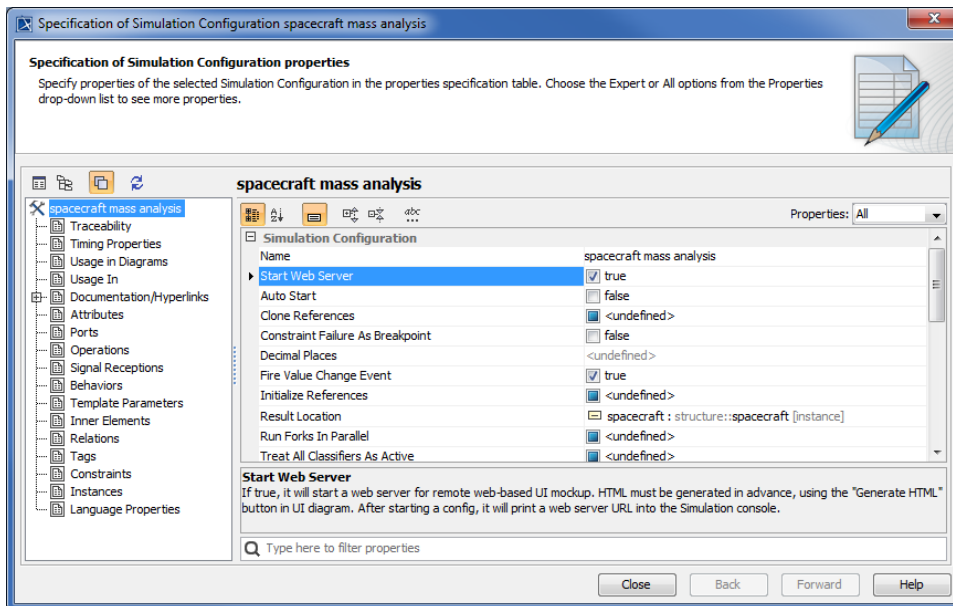


9. Close the Specification window.
10. Run the *spacecraft mass analysis* Simulation Configuration. The Console messages will appear.





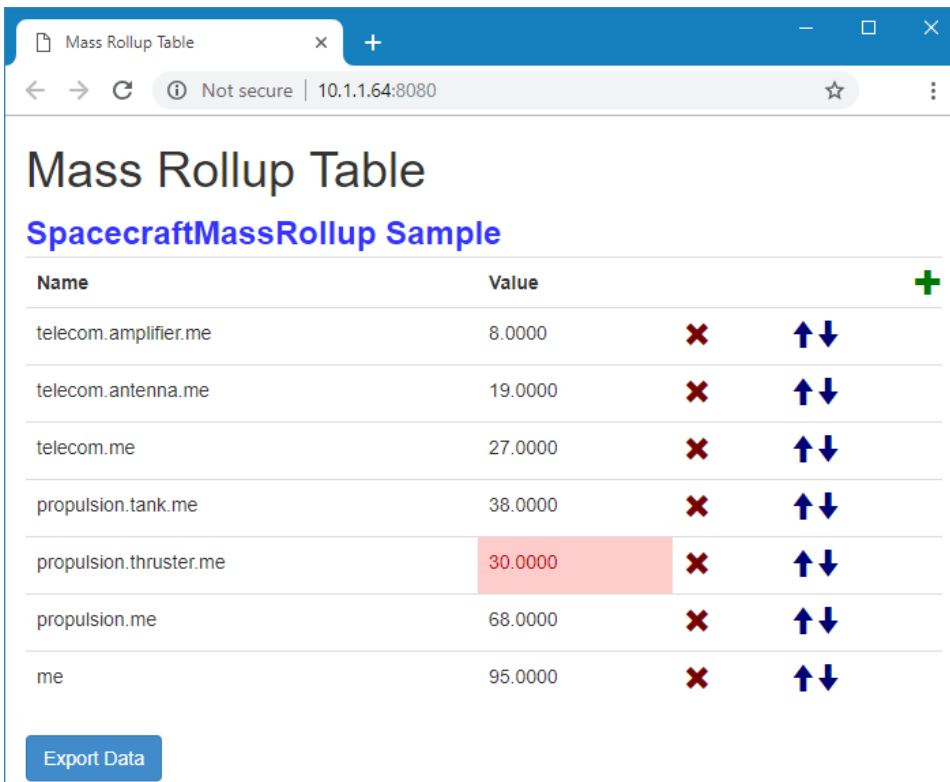
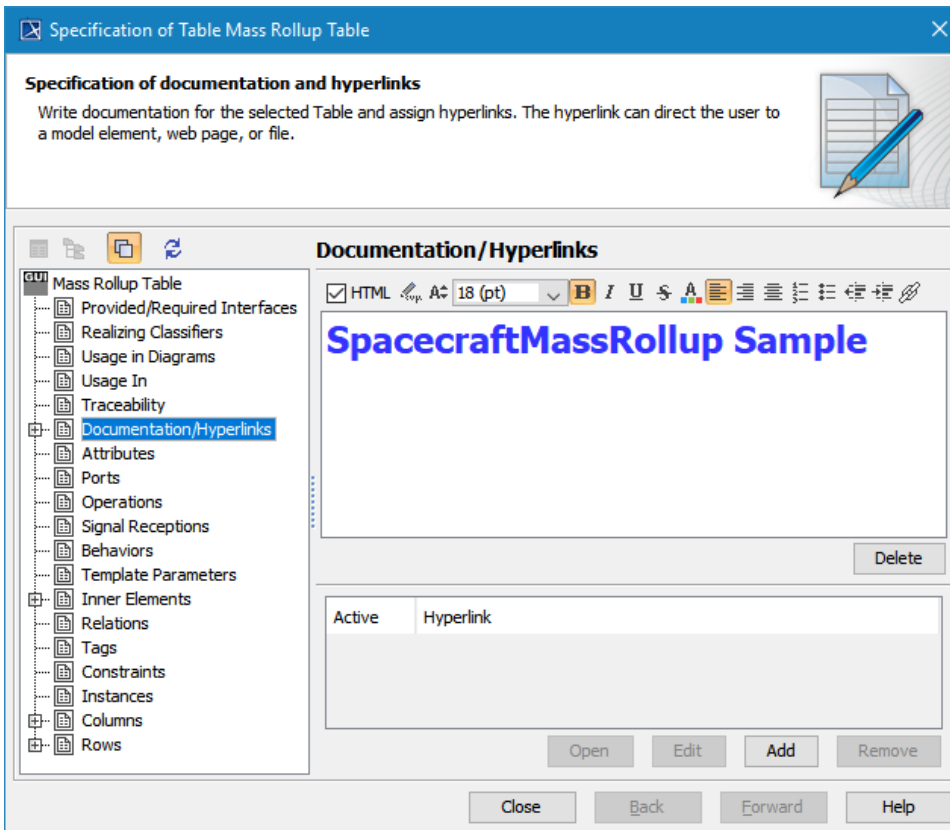
11. Note that a simulation web server has started. You can open the Specification window of Simulation Configuration to see the **Start Web Server** (true) option.



12. Click the HTTP link, e.g., <http://10.1.1.64:8080/> in the **Console** pane to view the simulation in real-time in your browser.

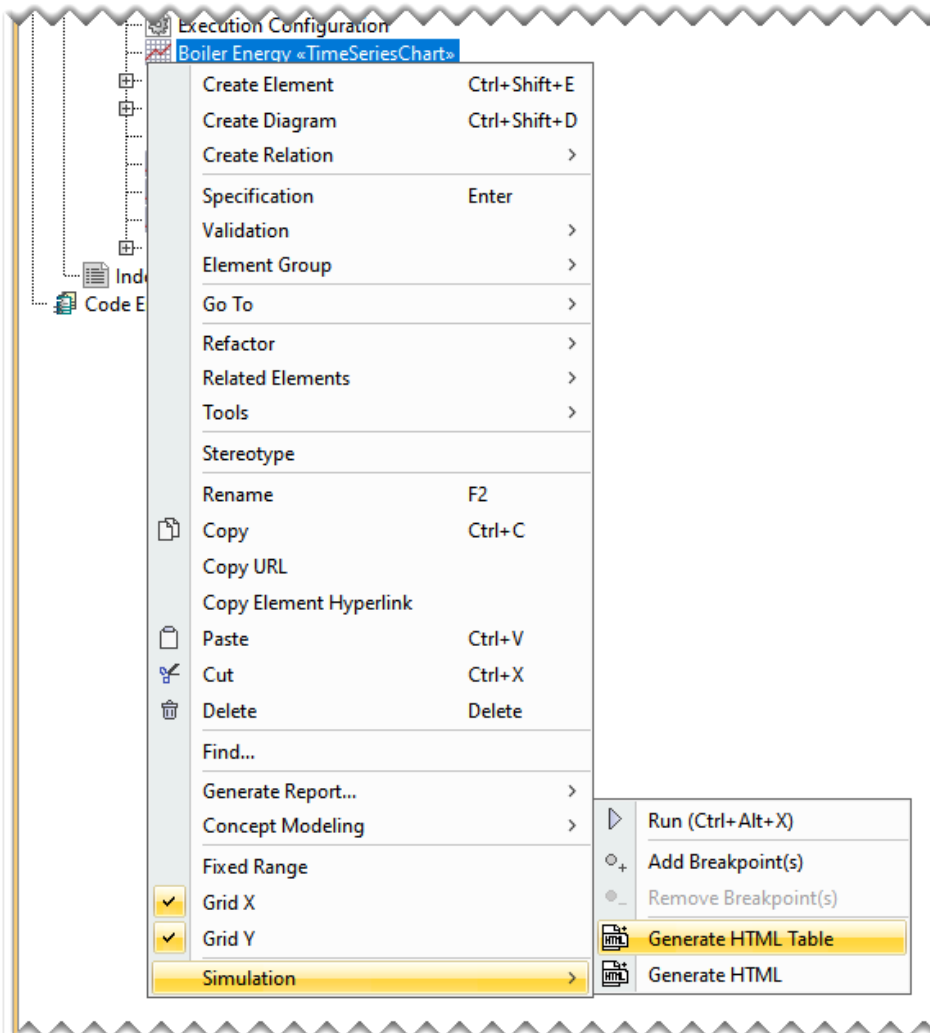
Note
The preferred browser is **Google Chrome**.

13. You can edit the **Documentation/Hyperlink** tag from the UI table's Specification window and run the simulation again. It will show the table's descriptions.



To generate an HTML table from either a Time series chart or a CSV export configuration

1. Right-click a Time Series Chart or a CSV Export configuration and choose **Simulation> Generate HTML Table**.



2. This will generate an HTML file, which can be viewed either online or offline. A message stating that the HTML table is generated will be displayed in the **Simulation Console** pane.

Sample model

The model used in the figures on this page is the *SpacecraftMassRollup.mdzip* sample model that comes with your modeling tool.

To open the sample

- Find it in the modeling tool `<modeling_tool_install_dir>\samples\simulation\SpacecraftMassRollup.mdzip`.