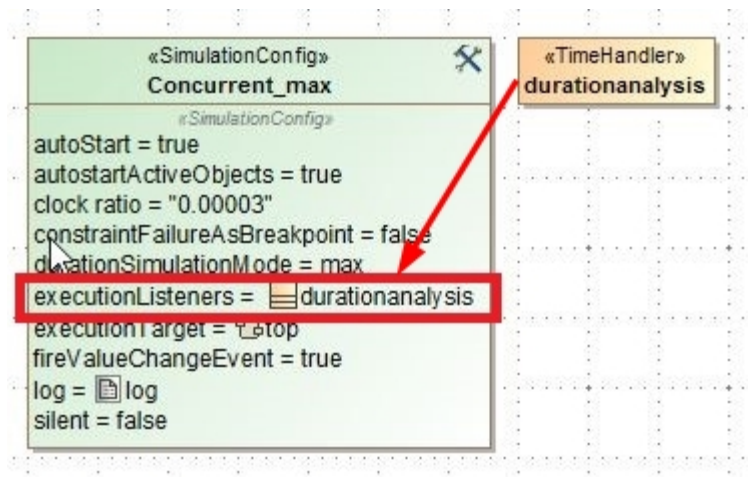


Duration analysis on visited elements

The duration analysis on visited elements feature is not enabled by default. To enable it, you need a TimeHandler and register it in the execution listener of the <<SimulationConfig>>. You can create the TimeHandler by creating a new Class and apply the <<TimeHandler>> stereotype.

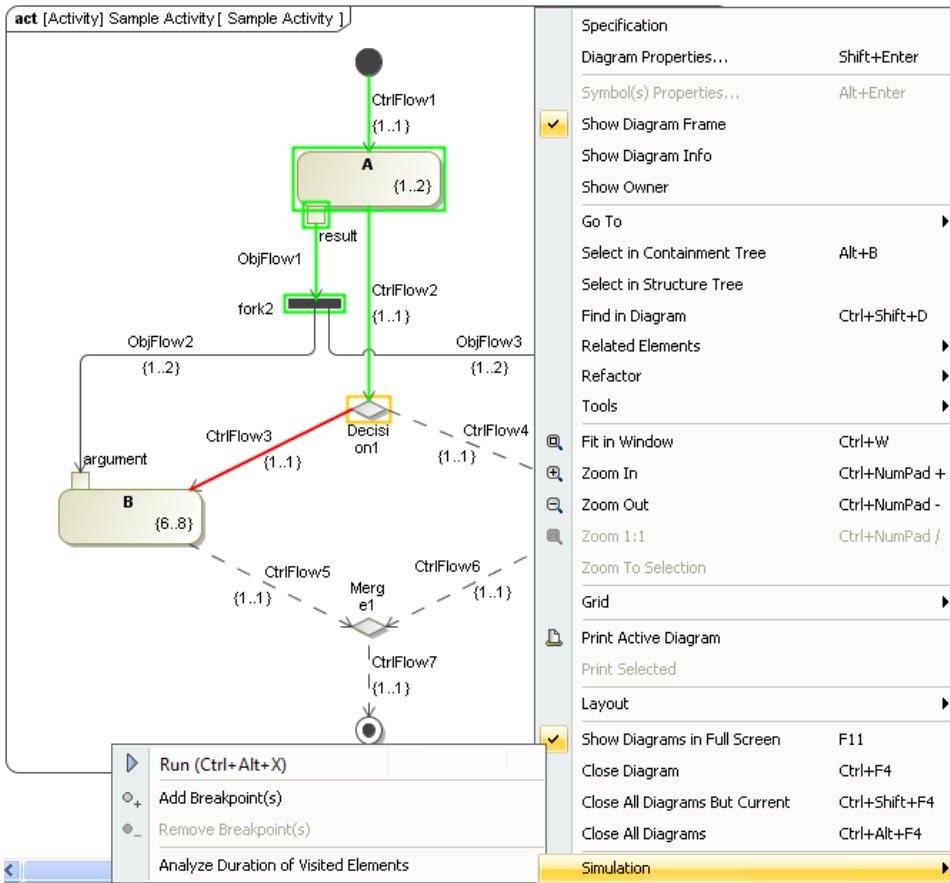


Enabling duration analysis on visited elements in the <<SimulationConfig>>.

You can view the duration of a running Activity by using the diagram's context menu **Analyze Duration of Visited Elements**.

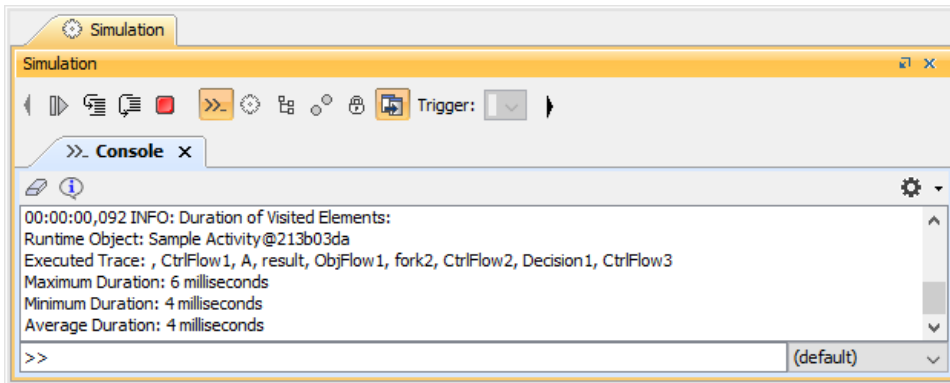
To see the duration of visited elements

1. Pause a currently running Activity by either adding a breakpoint or clicking the **Pause** button.
2. Right-click the diagram and select **Simulation > Analyze Duration of Visited Elements**.



Analyze duration on visited elements menu on the diagram context menu.

- The minimum, maximum, and average duration of the visited elements together with the simulated trace listing all of the visited elements will appear in the Simulation **Console** pane.



Duration of visited elements in the Simulation Console.

Related pages

- [Duration analysis](#)
- [Duration analysis on executed traces](#)