

# Importing DDS Profile and DDS Style in Other Projects

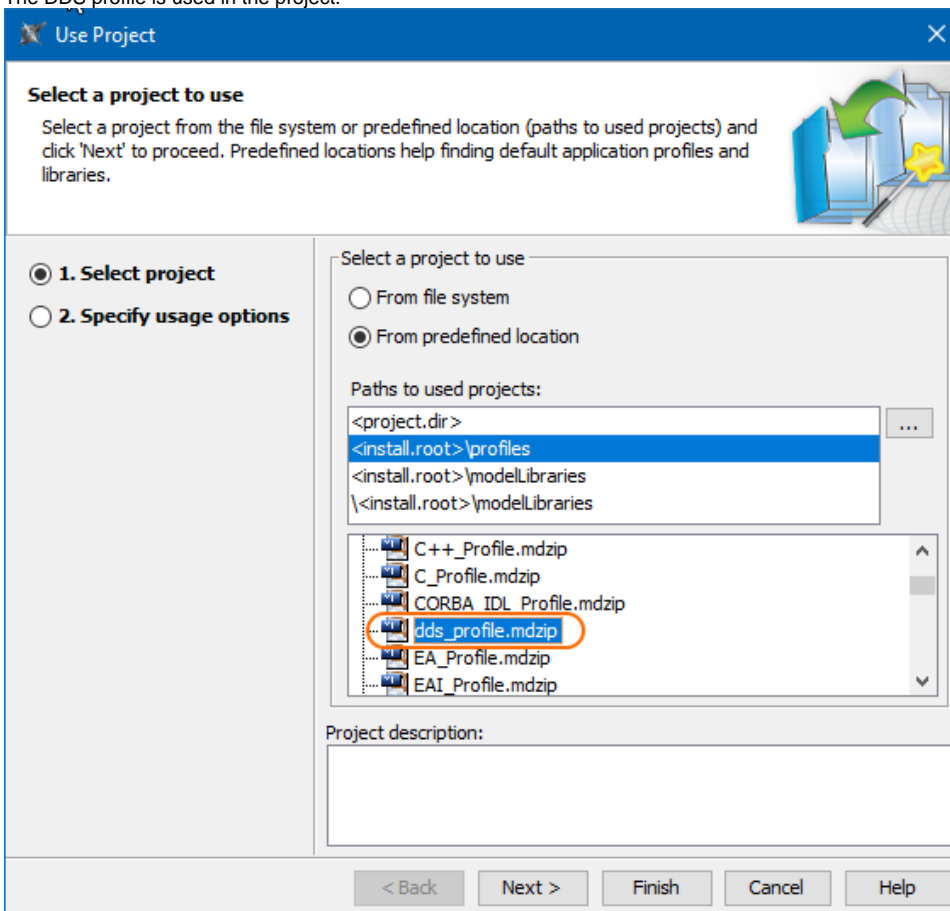
The created DDS projects already have the DDS profile imported and DDS Style set. You can reuse them in non-DDS projects.

- [Reusing the DDS profile in non-DDS projects](#)
- [Reusing the DDS Style in non-DDS projects](#)

## Reusing the DDS profile in non-DDS projects

Reusing the DDS profile in non-DDS projects

1. Open a non-DDS project in which you want to reuse the DDS profile.
  2. On the main menu, select **File > Use Project > Use Local Project**.
  3. In the opened **Use Project** dialog, you can select the DDS profile either:
    - From predefined location. Select the **Paths to used projects**: `<install.root>\profiles` and from the list below, select the `dds_profile.mdzip`.
    - From File system. Click **From file system** and from the product install folder, select `profiles/dds_profile.mdzip`. Click **Open**.
  4. Click **Next > Finish**.
- The DDS profile is used in the project.



## Reusing the DDS Style in non-DDS projects

Reusing the DDS Style in non-DDS projects

1. Open a non-DDS project in which you want to reuse the DDS Style.
2. On the main menu, select **Options > Project**.
3. In the **Project Options** dialog, select the **Symbol Style** property group.
4. On the right side of the dialog, click the **Import** button, and from the product install folder, select `templates/DDSSStyle.stl`. Click **Open**.
5. Select the **DDSSyle** from the Symbol Styles list.

6. Click **OK**.  
The DDS Style is used in the project.

