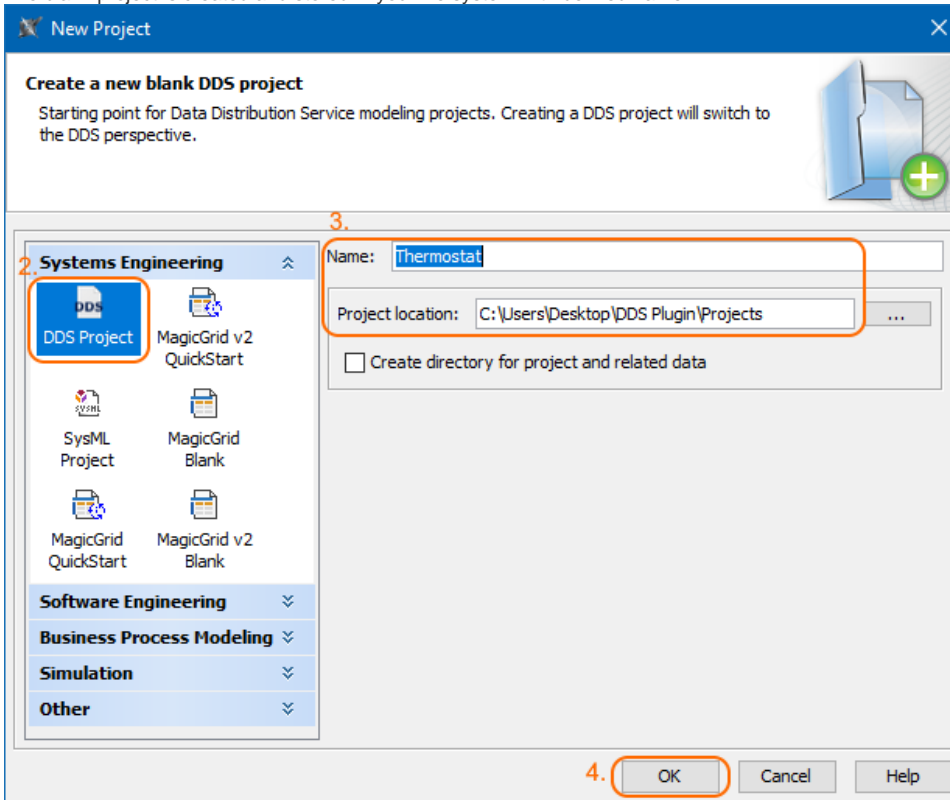


# Creating DDS project

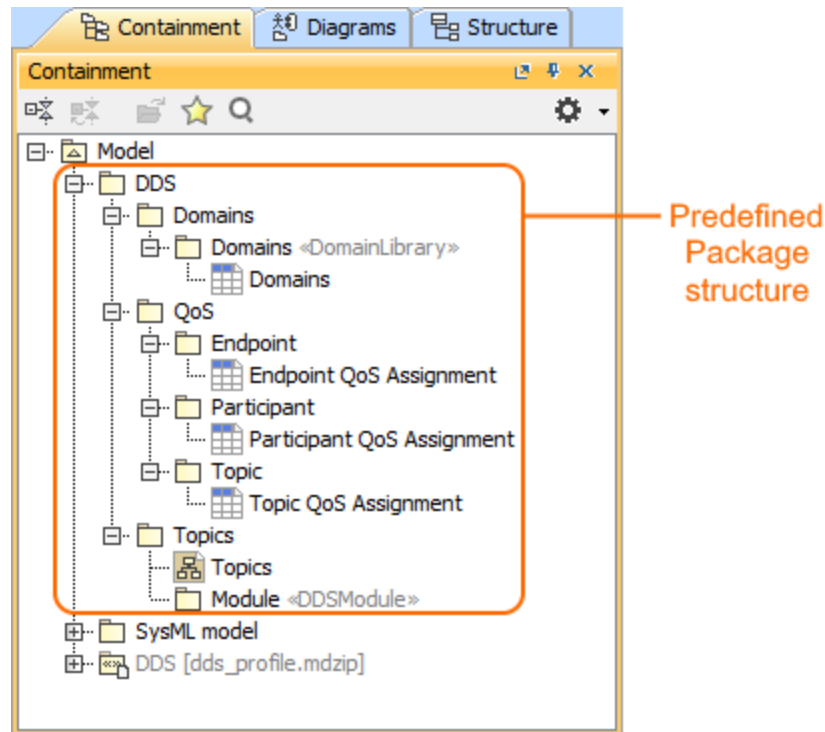
To create a blank DDS project

1. Do one of the following:
  - Select **File > New Project**.
  - On the main toolbar, click the **New Project** button.
  - Press **Ctrl+Shift+N**.
2. In the **New Project** dialog, under **Systems Engineering**, select **DDS Project**.
3. Specify name and location.
4. Click **OK** when you are done.

The blank project is created and stored in your file system with defined name.



Once you created the blank DDS Project, you can use for modeling already predefined Package structure as shown in the following figure.



The predefined Package structure of blank DDS project.