

Enterprise deployment

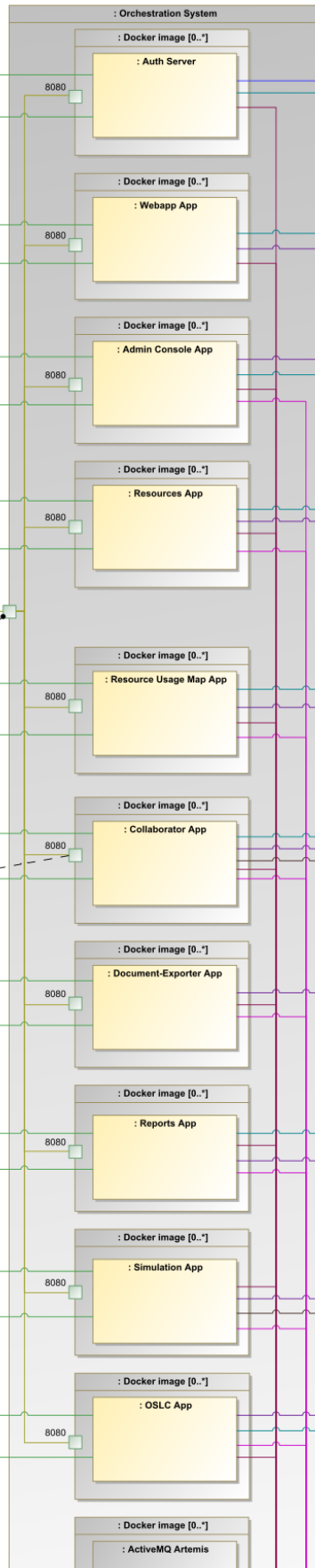
Web Application Platform as well as all of its plugins are provided as separate web applications. Therefore, it is possible to containerize applications and this way achieve better performance and scalability.

To learn how to containerize Web Application Platform applications using Docker, see the following topics:

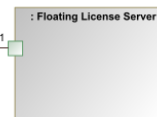
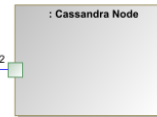
- [Building Magic Collaboration Studio containers](#)
- [Building Web Application Platform containers](#)
- [Deployment example for Web Application Platform on Kubernetes](#)

Internal communication of applications via HTTP requests. Communication port depends on Proxy server configuration.

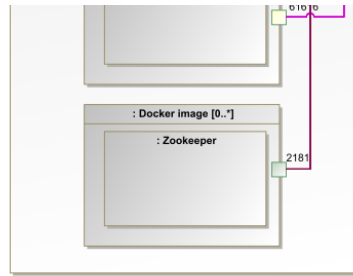
Sticky sessions via cookie.



- Legend**
- Internal network - HTTP
 - TWC Java API - AKKA
 - TWC REST API - HTTP
 - Flex protocol - TCP/IP
 - Web browser communication - HTTP
 - Service discovery - TCP/IP
 - Internal WEBAPP communication - HTTP
 - Cassandra protocol - TCP/IP
 - ActiveMQ Artemis - TCP/IP



Can be configured to 443 and 8443 accordingly for any App depending on the need to secure internal communication.



The enterprise deployment option for Web Application Platform and its services.