

Working with comments in a modeling tool

When you get feedback in a Cameo Collaborator document, you can address comments straight from the modeling tool. This saves time because you can quickly navigate from comments to commented elements and modify them without leaving the modeling environment.

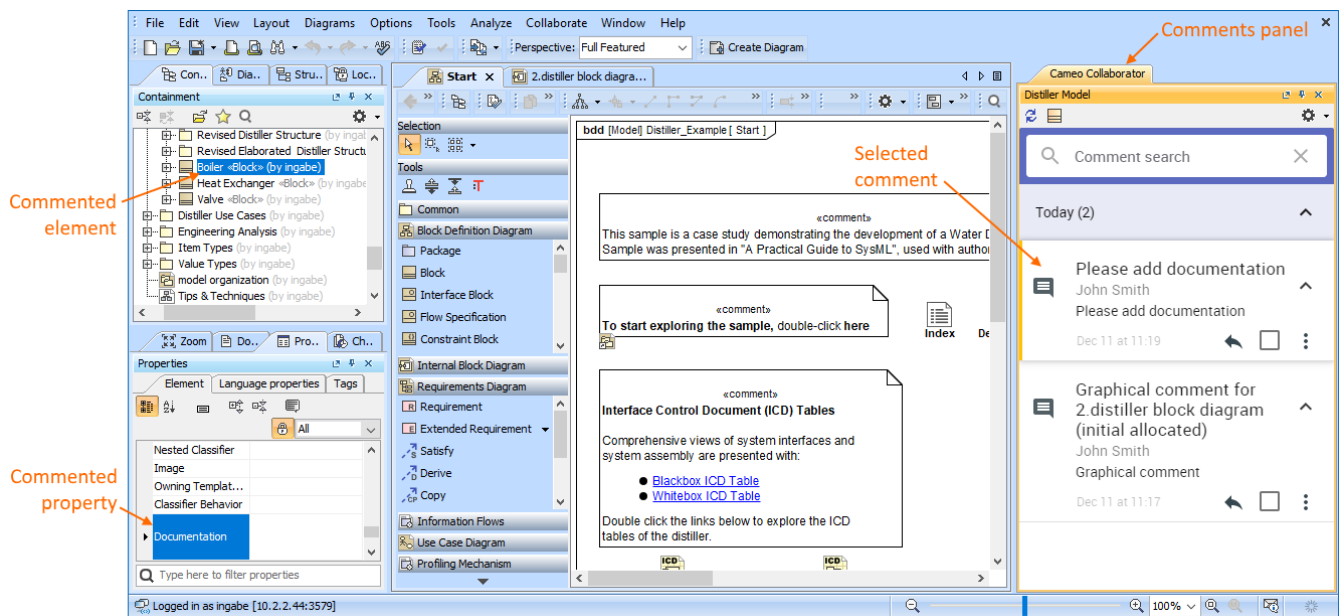


Cameo Collaborator and 3DEXPERIENCE platform

If [collaboration powered by the 3DEXPERIENCE platform is enabled in the Environment Options](#), The Cameo Collaborator Publisher plugin is disabled in the modeling tool, and you cannot work with Cameo Collaborator for Teamwork Cloud.

Once a Cameo Collaborator document has comments you need to respond to, do the following:

1. In a modeling tool, connect to Magic Collaboration Studio and open the model with Cameo Collaborator comments.
2. [Open the comments panel](#).
3. Do one or several of the following actions:
 - a. Select a comment in the comments panel to navigate to the commented element and its commented properties.
4. Modify the model to address comments.
5. [Reply to comments](#) to confirm that they have been addressed or ask additional questions (you can also resolve, edit, and delete comments).
6. Save/commit and [publish](#) the updated model.



Use the comments panel in your modeling tool to navigate to the commented element and update it in the model.

To learn more about working with comments in a modeling tool, see the following topics:

- [Opening the comments panel](#)
- [Navigation and filtering](#)
- [Replying to a comment](#)
- [Resolving a comment](#)
- [Editing a comment](#)
- [Deleting a comment](#)