

# 2021x Refresh1 Version News

## SysML Plugin

Released on: June 4, 2021

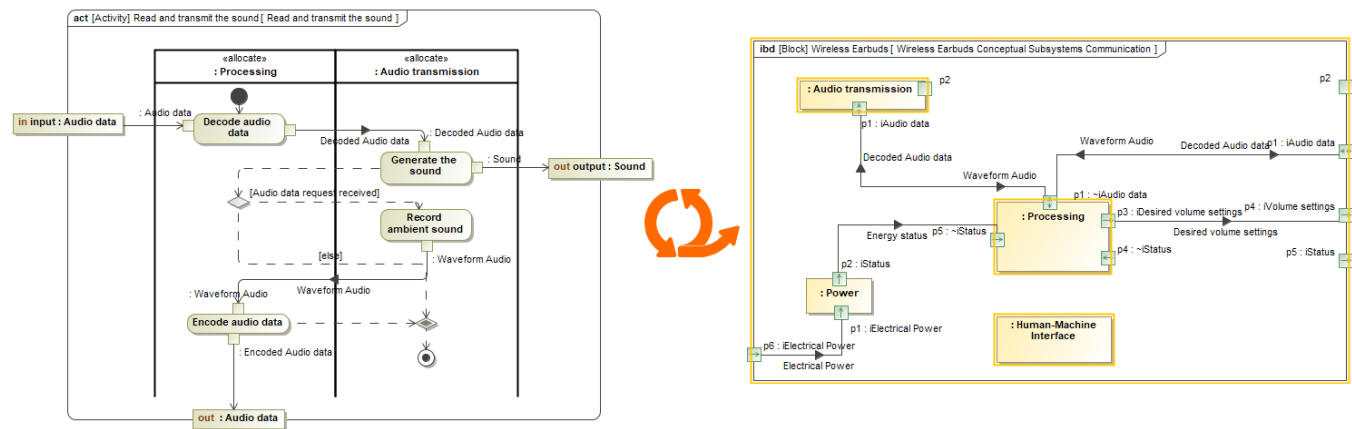
The 2021x Refresh1 release introduces Behavior to Structure synchronization, Contextual Relationships enhancements, and other improvements.

To download the latest version, see [Downloading installation files](#). Don't forget to give us your feedback on [LinkedIn](#), [Twitter](#), or [Facebook](#). For further information, see the product [documentation](#).

- [Behavior to Structure Synchronization](#)
- [Contextual Relationships Enhancements](#)
- [Other improvements](#)

### Behavior to Structure Synchronization

You can now keep your Internal Block diagram (IBD) consistent with Activities with less effort! Our brand new behavior-to-structure synchronization allows you to validate Part Properties in an IBD to check whether Proxy Ports exist and are typed by compatible Interface Blocks based on flows found in Activities. As a result, instead of manually updating IBDs to be consistent with Activities, coherence between them is ensured by automatically detecting inconsistencies and providing the user with the solvers to handle each inconsistency individually.



Synchronizing IBD based on Activities.

[Learn more about behavior to structure synchronization >>](#)

### Contextual Relationships Enhancements

Contextual Relationships have undergone major improvements! From now on, you can create contextual relationships directly in structure tree view tables and represent data in table columns by considering the usage context of the row elements.

#	Name	Satisfies (contextual)
1	SUV	
2	transmission	
6	grossMass	
7	wheel	
8	tire	
11	brake	
12	pad	
13	brakeMU	
14	width	
15	centerLength	
16	thickness	1.8 Pad Center Thickness

Search for: ☒ Type and Package ☐ Property ☐ Any Element

Search by Name

Tree List

<UNSPECIFIED>

Model

ISO-80000 «ModelLibrary» [ISO-80000.mdzip]

Requirements

1 SUV Requirements «Requirement»

- 1.1 Brake Heating «Requirement»
- 1.2 Brake Pad Life «Requirement»
- 1.3 Vehicle Weight «Requirement»
- 1.4 Tires «Requirement»
- 1.5 Rotor Diameter «Requirement»
- 1.6 Pad Width «Requirement»
- 1.7 Pad Center Length «Requirement»
- 1.8 Pad Center Thickness «Requirement»

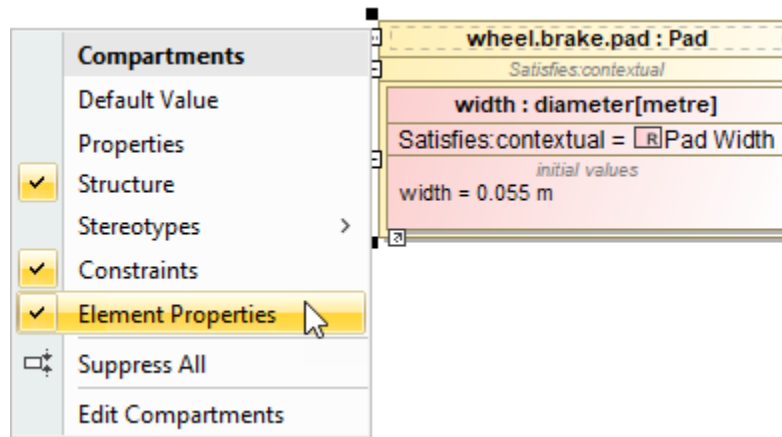
☒ Apply Filter ( Ctrl+Space )

#	Name	Satisfies (contextual)
1	SUV	
2	transmission	
6	grossMass	
7	wheel	
8	tire	
11	brake	
12	pad	
13	brakeMU	
14	width	1.6 Pad Width
15	centerLength	1.7 Pad Center Length
16	thickness	1.8 Pad Center Thickness

Creating contextual relationships in tables.

Additionally, for a more compact Internal Block Diagram (IBD) view, you can now represent contextual relationships in the **Element Properties** compartment of the element shape.

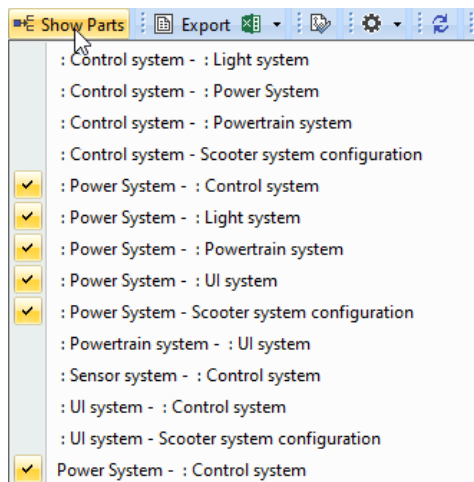


Displaying contextual relationships in the element compartment.

[Learn more about creating and displaying contextual relationships >>](#)

### Other improvements

- In earlier versions, the **Show Parts** filter was hard to use in larger projects: only a limited list of connectors was visible; and identifying the connectors was difficult in some cases. This version brings enhancements that will allow easy searching, identification, and selection of all connectors which are connected to a part. Using this dialog, you can easily filter connectors and choose which ones should be displayed in the table or hidden from it. [Learn more >>](#)



Earlier versions

2021x Refresh1

