

Installing Web Application Platform on Windows

The content of this chapter is intended for system administrators. Here you can learn how to install and configure Web Application Platform with Cameo Collaborator and other web applications used with Teamwork Cloud.

Installation prerequisites and other important information

To install the Web Application Platform with plugins, you need to:

- Have a working instance of [Teamwork Cloud](#).
- If you intend to install the Cameo Collaborator for Teamwork Cloud application, make sure that the [FlexNet license server](#) is installed beforehand.

To install the Web Application Platform for production use

1. Download the [Web App Platform <version number>_win64.exe](#) file.
2. Run the [Web App Platform <version number>_win64.exe](#) file as an administrator to start the installation wizard.

2. Specify the location where you want to install the Web Application Platform in one of the following ways:

Before starting the installation, you should know the following:

- Use the default location suggested in the **Where would you like to install?** box.
- Click **Choose** and select a location on your machine.

3. Click **Next**.

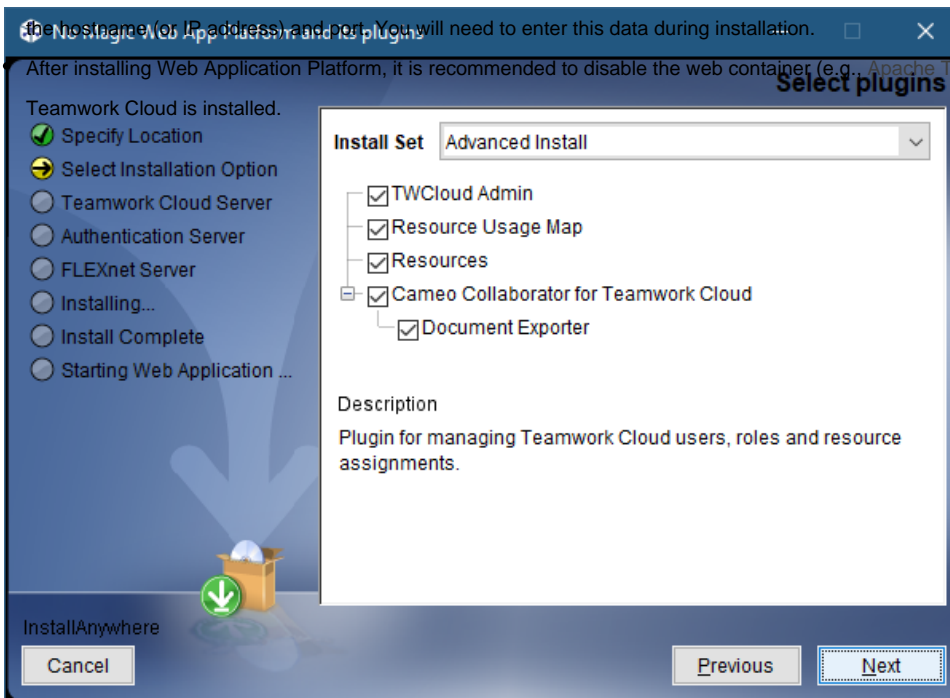
4. Select the **Advanced Install Web Application Platform** and click **Next**.

5. Select the checkboxes next to the plugins you want to install and click **Next**.

- Before installing Web Application Platform, make sure you know Teamwork Cloud, Authentication server, and FLEXnet server data, such as

the hostname (or IP address) and port. You will need to enter this data during installation.

After installing Web Application Platform, it is recommended to disable the web container (e.g., Apache Tomcat) on the machine where



Tip

Click the plugin name to read its description on the bottom of the installation wizard or read the plugin documentation listed below:

- [Teamwork Cloud Admin](#)
 - [Resource Usage Map](#)
 - [Resources](#)
 - [Cameo Collaborator for Teamwork Cloud](#)
 - [Document Exporter](#)
6. Specify the Teamwork Cloud hostname (or IP address), REST API port, and client API port in the appropriate boxes.
 7. If your Teamwork Cloud instance uses SSL certificates, select the **SSL** check box.

No Magic Web App Platform and its plugins

Teamwork Cloud Server

- ☒ Specify Location
- ☒ Select Installation Option
- ☒ Teamwork Cloud Server
- ☐ Authentication Server
- ☐ FLEXnet Server
- ☐ Installing...
- ☐ Install Complete
- ☐ Starting Web Application ...

Specify Teamwork Cloud server properties.

Hostname/IP:

REST port:

TWC client port

☒ SSL

InstallAnywhere

- Click **Next**.
- Specify the Authentication server hostname (or IP address), port, and password to be used by the authentication client (the **Client secret**) in the appropriate boxes.
- If your Authentication server instance uses SSL certificates, select the **SSL** check box.

No Magic Web App Platform and its plugins

Authentication Server

- ☒ Specify Location
- ☒ Select Installation Option
- ☒ Teamwork Cloud Server
- ☒ Authentication Server
- ☐ FLEXnet Server
- ☐ Installing...
- ☐ Install Complete
- ☐ Starting Web Application ...

Specify Authentication server properties.

IMPORTANT: Make sure you update the "authentication.redirect.uri.whitelist" property in the authserver.properties file.

Hostname/IP:

Port:

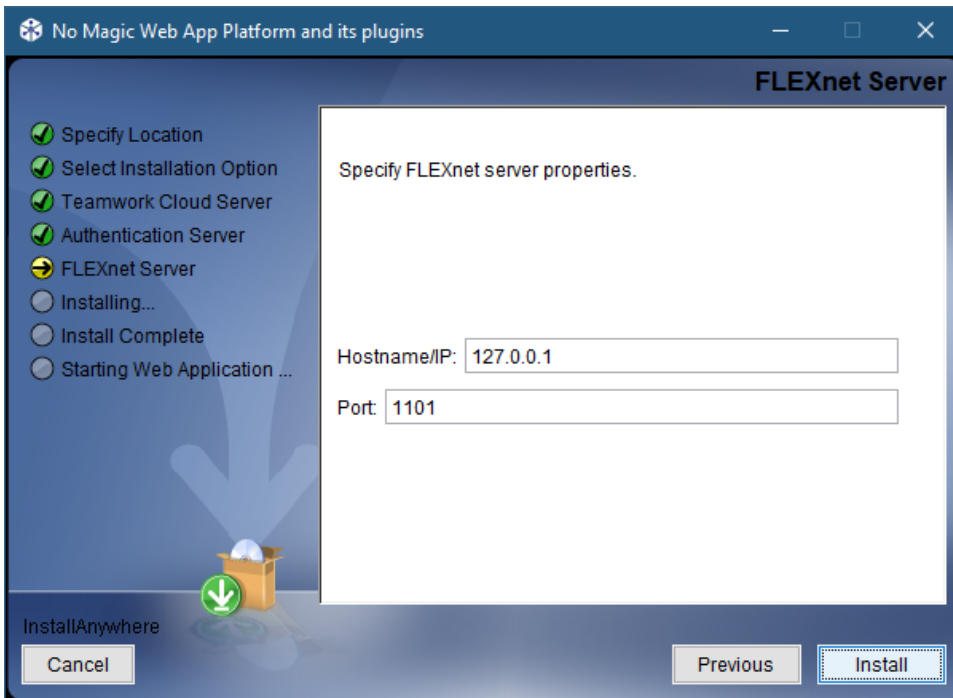
Client secret

☒ SSL

InstallAnywhere

- Click **Next**.

12. Specify the FLEXnet server hostname (or IP address) and port in the appropriate boxes.



13. Click **Install**.
14. When you get the notification that Web Application Platform is successfully installed, click **Next**.
15. If you want to start Web Application Platform after exiting the installation wizard, leave the **Start Zookeeper and WebApp as a service** check box selected. Otherwise, clear the check box.
16. Click **Done**.
17. When the installation is finished, update the **authentication.redirect.uri.whitelist** property in the *authserver.properties* file by adding the Web Application Platform address *http(s)://<domain_name>:<port>/webapp* as its value.
18. If you chose to install Came Collaborator for Teamwork Cloud, [apply the Cameo Collaborator license](#).

Web Application Platform is now installed with the selected plugins and started if you choose this option in step 15. To access Web Application Platform, open a web browser and go to *http(s)://<domain_name>:<port>/webapp*. By default, the Web Application Platform uses port 8443.



Starting Web Application Platform manually

If you want to [start Web Application Platform manually](#), start Zookeeper first and only then - Web Application Platform.

Related pages

- [Installing Web Application Platform on Linux with GUI](#)
- [Installing Web Application Platform manually](#)