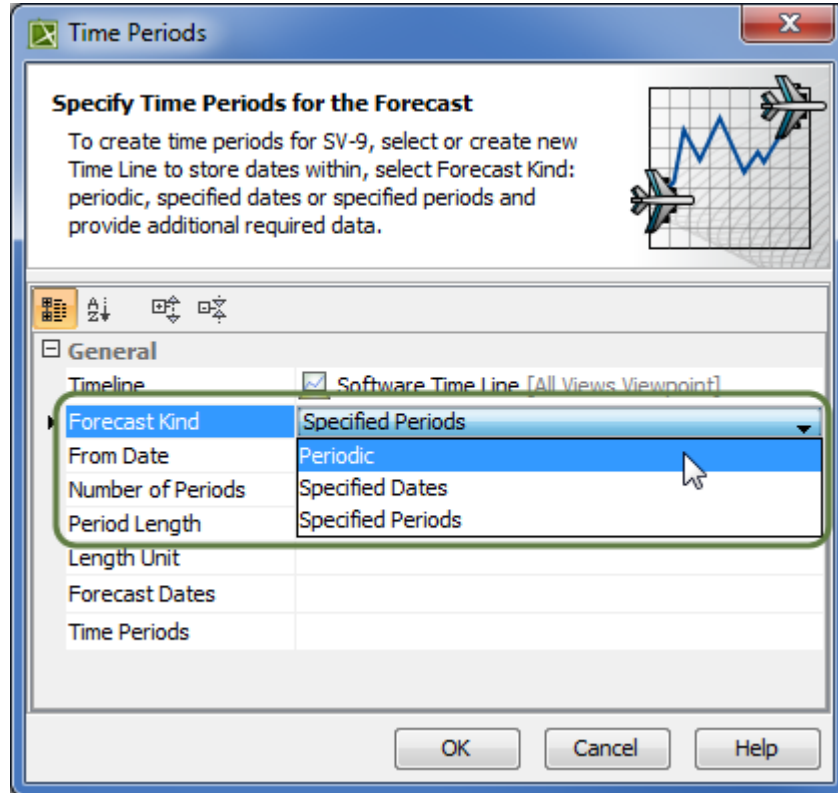


Forecast Kinds in Time Periods dialog



These set of instructions will explain how to choose **Forecast Kinds** and how to specify their values.

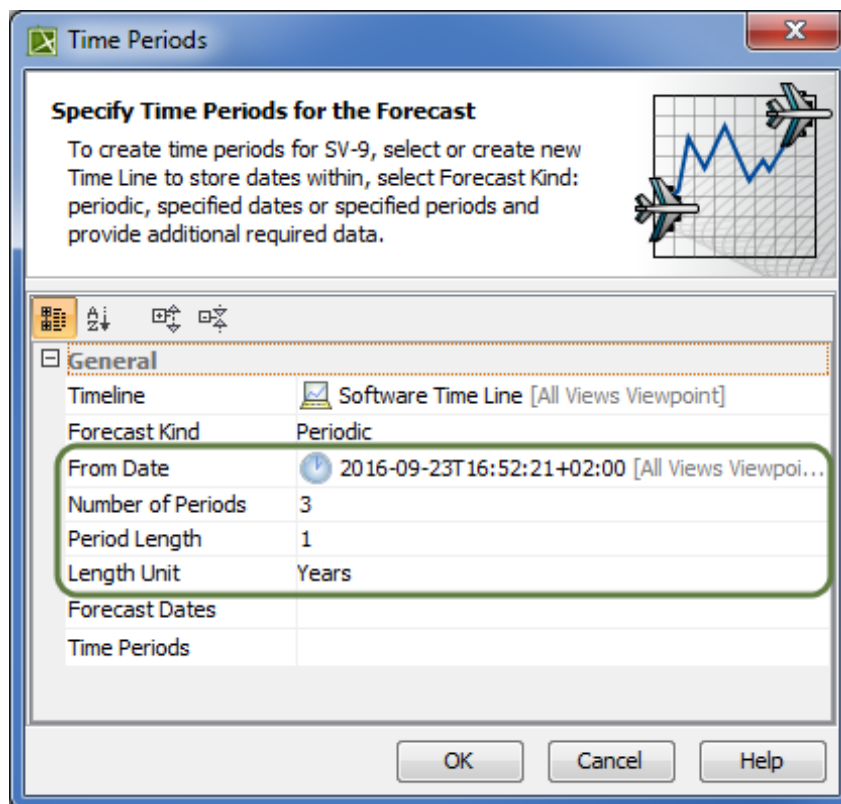
There are three types of Forecast Kind:

- **Periodic** - to divide the forecast into equal periods.
- **Specified Dates** - to divide the forecast into specific dates.
- **Specified Periods** - to divide the forecast into specific time periods.



To specify Periodic Forecast Kind

1. Select **Periodic** as the **Forecast Kind**.
2. Specify **From Date** by doing one of the following:
 - Click , or Alt+Down, and select an already existing date from the list.
 - Click , and select a date from the opened **Date and Time Settings** dialog.
3. Specify forecast periods in the **Number of Periods** field.
4. Select **Length Unit**: Years, Months, or Days.
5. Specify **Period Length** of the forecast according to the **Length Unit**.



An Example of a Periodic Forecast Kind.

All data defined in the **Time Periods** dialog is displayed automatically in columns for each period.

SV-9 x				
<div> Add New Add Existing... Time Period Delete Remove From Table Sort Columns </div>				
Criteria				
Scope (optional): Drag elements from the Model Browser {key} ... Filter: Q~				
#	Technology area	From: 2016-09-23 To: 2017-09-23	From: 2017-09-23 To: 2018-09-23	From: 2018-09-23 To: 2019-09-23
1	Helicopter			
2	Maritime Rescue Coordination Center Software			
3	Compas-Sarsat System Standard			

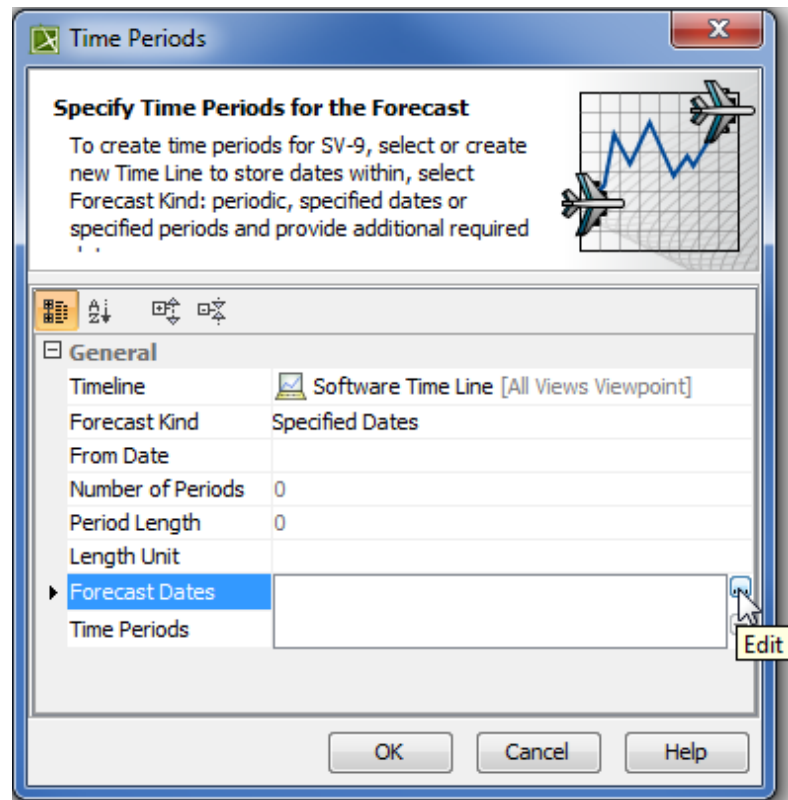
Example of Periodic Forecast Kind in the Model

Specified Dates

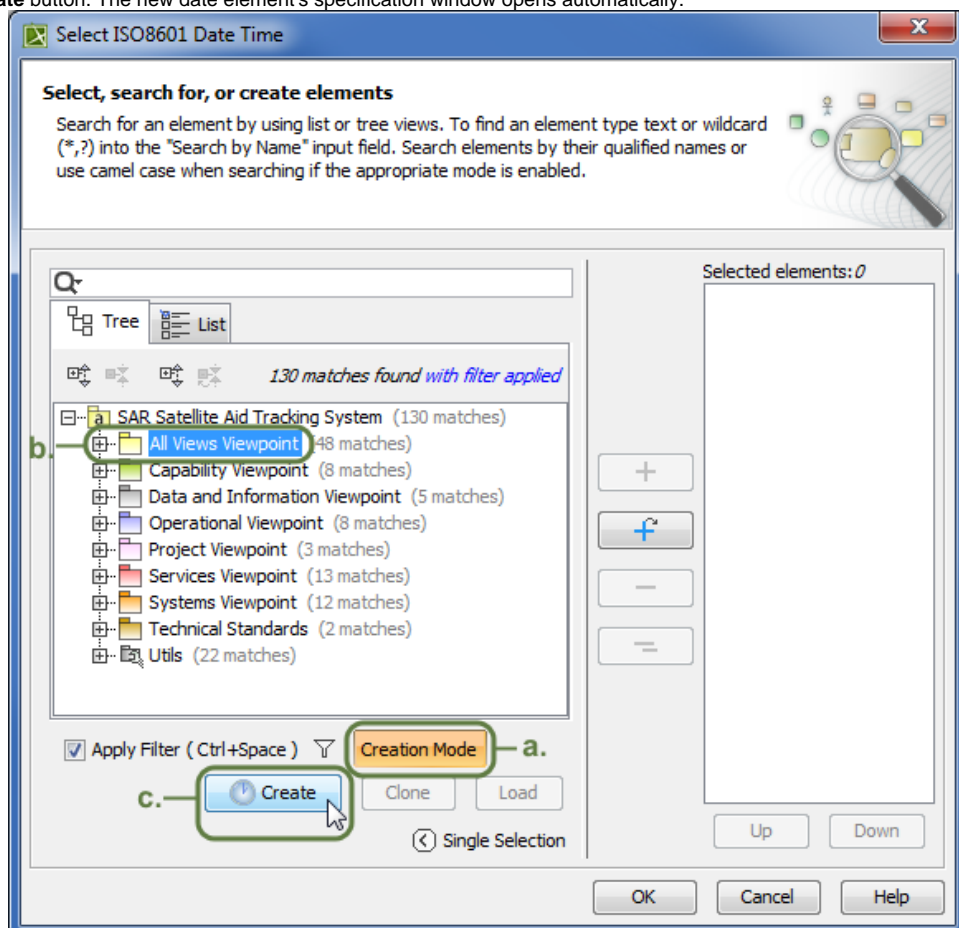
For Specified Dates Forecast Kind, you only need to specify the Forecast Dates. The previous fields are uneditable.

To specify Specified Dates Forecast Kind

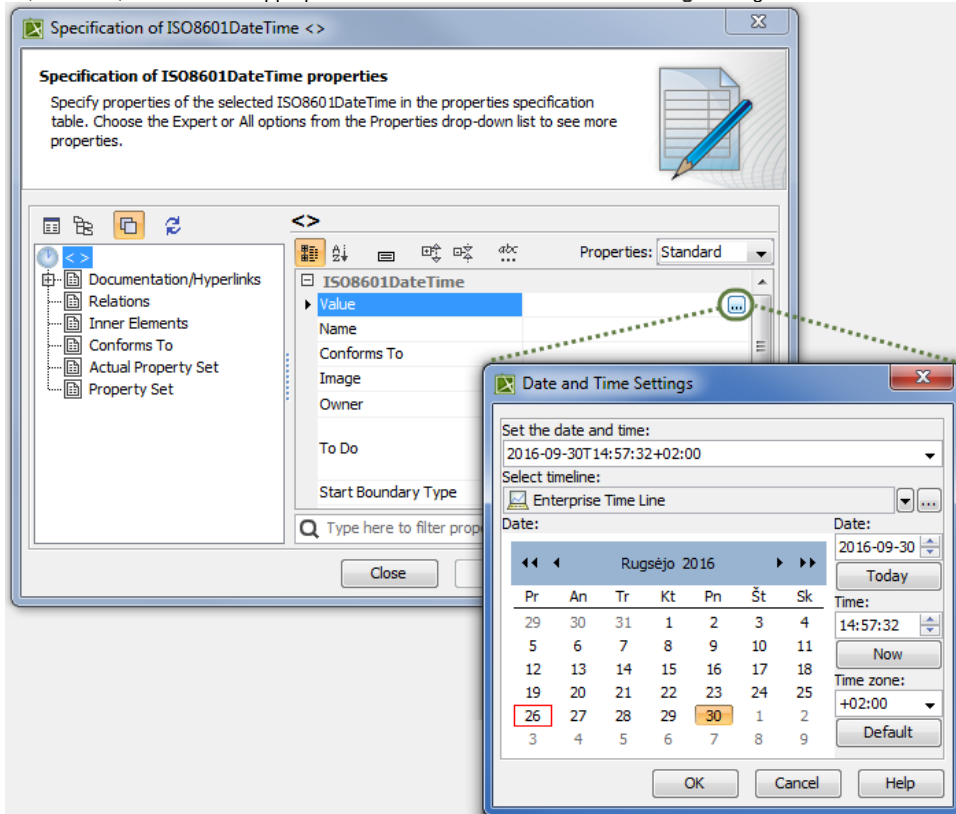
1. Select **Specified Dates** as the Forecast Kind.
2. Under **Forecast Dates**, click to open the **Select ISO8601 Date Time** dialog.



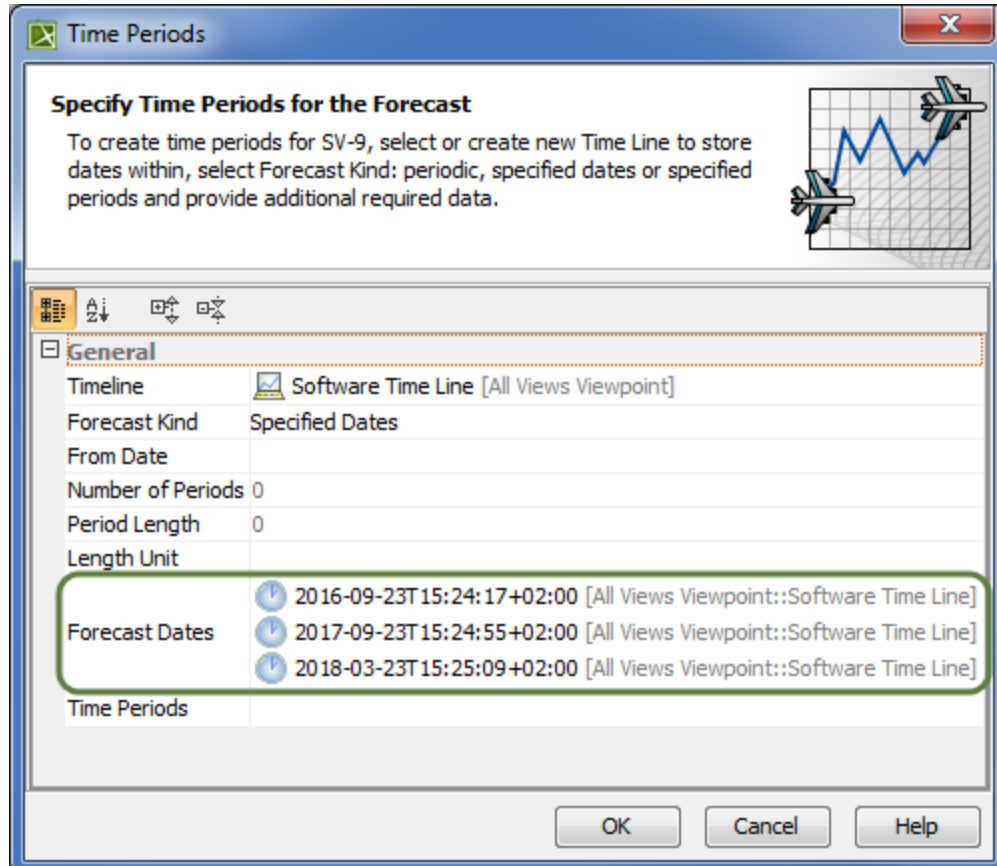
3. Select the existing **ISO8601DateTime** element (date) from the **List**. You can create a new one by taking the following steps.
 - In the **Select ISO8601 Date Time** dialog, make sure **Creation Mode** is on.
 - Select the appropriate package from the list in which you want to store a new **ISO8601DateTime** element (date).
 - Click the **Create** button. The new date element's specification window opens automatically.



- In the **Value** field, click , and select an appropriate date from the **Date and Time Settings** dialog.

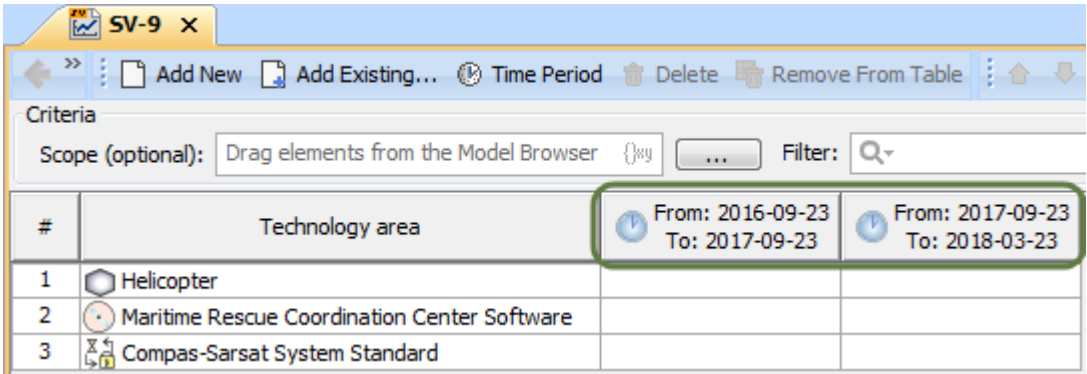


- Click **Close**, or create more dates by repeating steps c. and d.
4. Click **OK**.



An Example of a Specified Dates Forecast Kind.





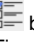
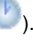
All data defined in the **Time Periods** dialog are displayed in columns in the table. In this case, three dates (2016-09-23, 2017-09-23, and 2018-03-23) were automatically divided into two columns (from 2016-09-23 to 2017-09-23, and from 2017-09-23 to 2018-03-23).

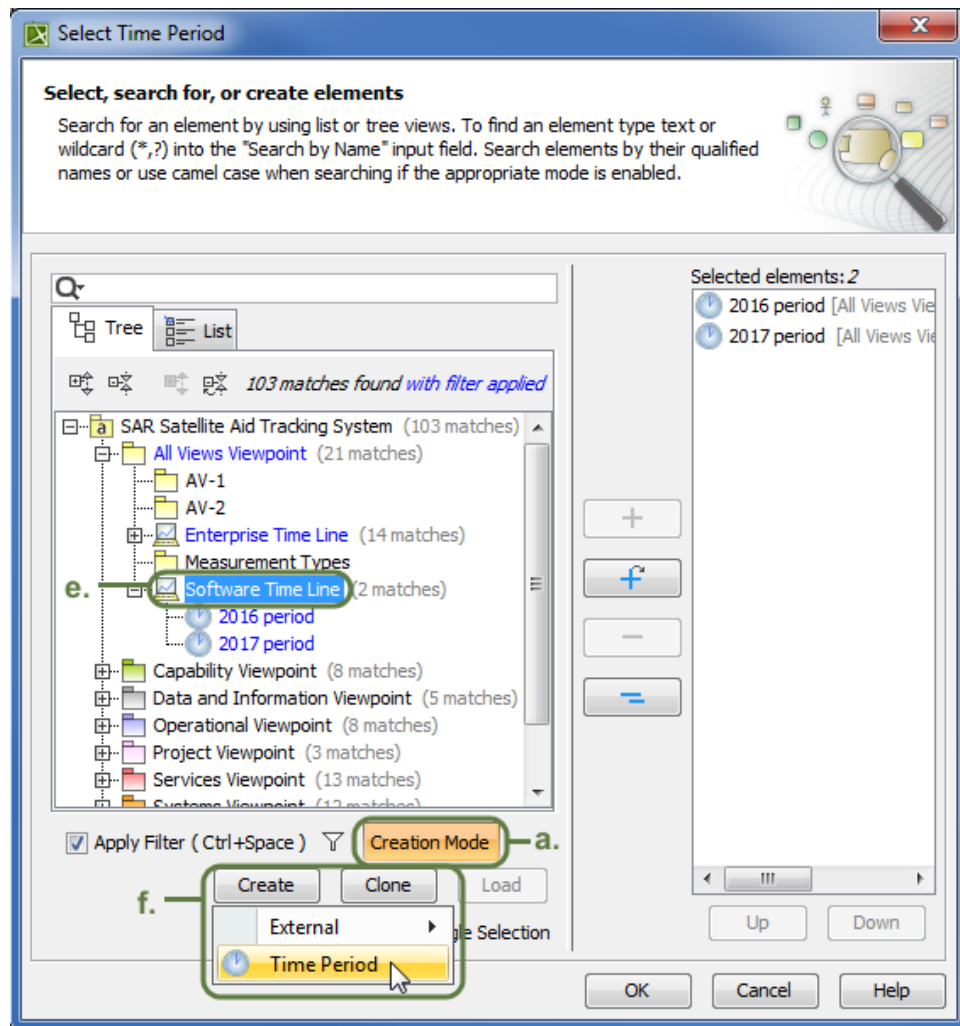


#	Technology area	From: 2016-09-23 To: 2017-09-23	From: 2017-09-23 To: 2018-03-23
1	Helicopter		
2	Maritime Rescue Coordination Center Software		
3	Compas-Sarsat System Standard		

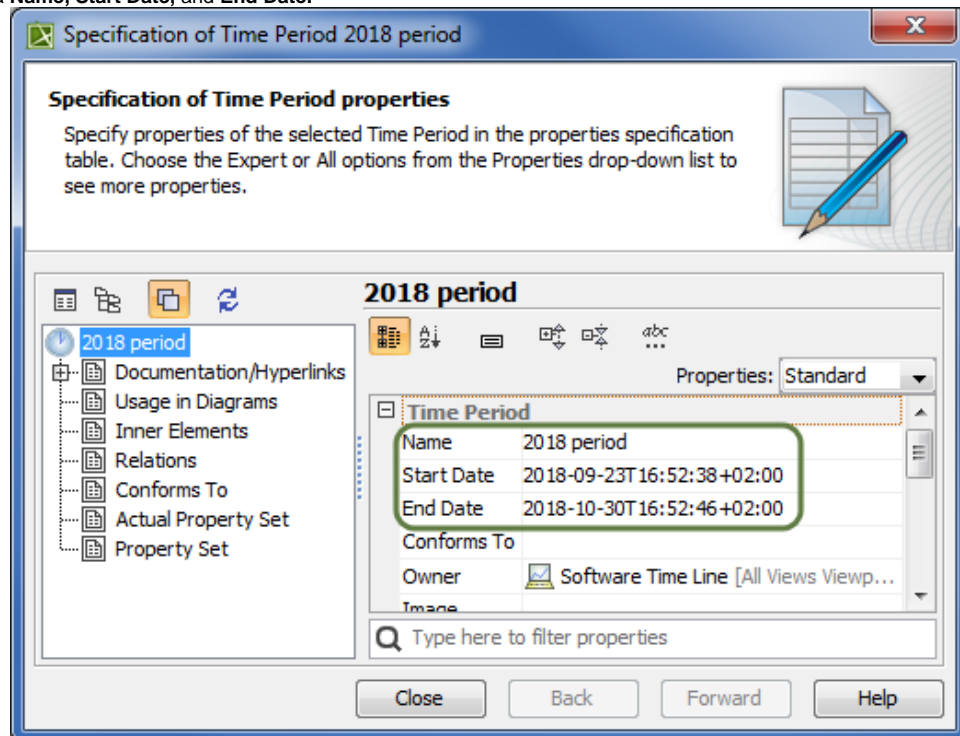
Example of Specified Dates Forecast Kind in the Model

To specify Specified Periods Forecast Kind

1. Select **Specified Periods** as the Forecast Kind.
2. In the **Time Periods** field, click  to open the **Select Time Period** dialog.
3. In the opened dialog, you can do the following:
 - Click the **Tree**  button and expand the tree until you find an existing Timeline element () with existing  , and double-click on each one. Skip to Step 4.
 - Click the **List**  button and double-click each existing Time Periods (). Skip to Step 4.
 - Create a new Timeline element **with** Time Periods. Here's how:
 - Ensure that element **Creation Mode** is turned on.
 - Select the appropriate package from the list in which you want to store a new Timeline element.
 - Click the **Create** button. The Specification window of the newly created Timeline opens automatically.
 - Type a name for the new Timeline, and click **Close**.
 - Select the newly created Timeline element.
 - Click the **Create** button, and select **Time Period**. The Specification window of the newly created Time Period opens automatically.

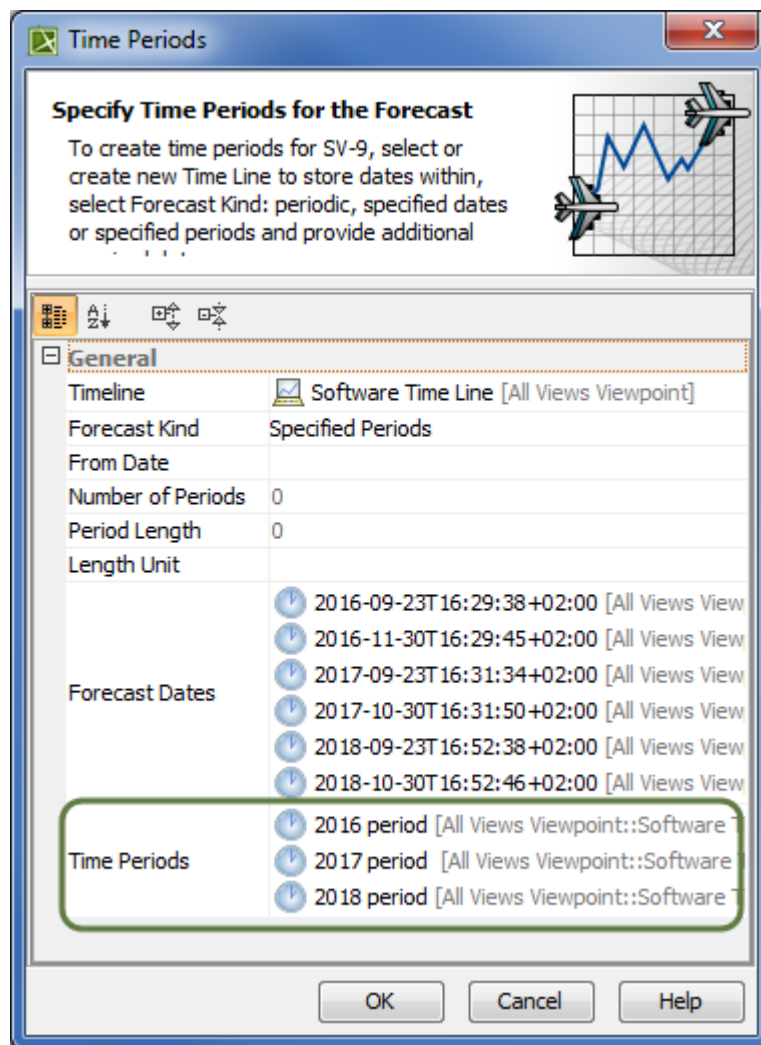


- Specify a **Name**, **Start Date**, and **End Date**.



- Click **Close**.

4. Click **OK**.



Example of a Specified Periods Forecast Kind.

All time periods defined in the **Time Periods** dialog are displayed in the table as columns. In this case, three periods (2016 period, 2017 period, and 2018 period) with their specific start and end dates were defined and displayed as columns in the SV-9 table.

SV-9				
<> Add New Add Existing... Time Period Delete >> Export				
Criteria				
Scope (optional): Drag elements from the Model Browser Filter: Q				
#	Technology area	From: 2016-09-23 To: 2016-11-30	From: 2017-09-23 To: 2017-10-30	From: 2018-09-23 To: 2018-10-30
1	Helicopter			
2	Maritime Rescue Coordination Center Software			
3	Compass-Sarsat System Standard			

Example of Specified Periods Forecast Kind in the Model