

Lr Lines of Development

Description

The Lr Lines of Development view specifies the logical threads (lines of development) for a set of projects and programmes. The status of each of these threads can be shown at the various milestones in the projects or programmes. The Lr view is primarily intended to support the acquisition process across multiple projects or programmes, including the management of dependencies between projects and the integration of all the DLODs to achieve a successfully integrated military capability.

Use of the Lr view should support the management of capability delivery and be aligned with [Cr Capability Roadmap](#) view.

The Lr view may be used for:

- Project management and control (including delivery timescales).
- Project dependencies and the identification of associated risk.
- Portfolio management.
- Through Life Management Planning (TLMP).

Implementation

The L3 view can be represented using:

- Lr Programme to Capability Mapping matrix.

Criteria

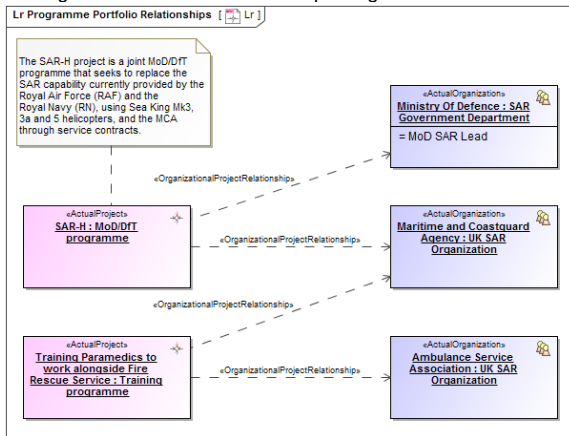
Select Row Scope:

	Emergency Response Enhancement	Flood Response	SAR-H : MoD/DfT programme	SAR Project : DLOD Project	Training Paramedics to work alongside Fire Rescue Service : ...
Assistance					
Distress Signal Monitoring					
Inform					
Land SAR					
Maritime SAR					
Military C2					
Recovery					
SAR					
SAR C2					
Search					
UK SAR Capability					

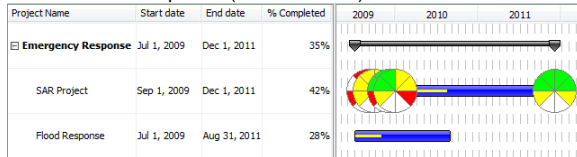
Related procedures

- [Creating Lr Lines of Development \(Lr Gantt chart\)](#)
- [Building Lr Programme to Capability Mapping matrix](#)
- [Creating Lr Responsibility Matrix](#)
- [Creating Lr Programme Portfolio Relationships diagram](#)
- [Manipulations in Lr Lines of Development \(Lr Gantt chart\)](#)

- Lr Programme Portfolio Relationships diagram.



- Lr Lines of Development (Lr Gantt chart).



- Lr Responsibility Matrix.

Criteria

Select Row Scope: NPV-LNPV-2

Select Column Scope: D2

	Reliance Service Association : UK SAR Organization	Department Of Transport : SAR Government Department	DoT SAR Lead : UK SAR SC Member	RAF SAR Lead : UK SAR SC Member	Ministry Of Defence : SAR Government Department	RAF SAR Lead : UK SAR SC Member	RAF SAR Lead : UK SAR SC Member	RAF SAR Lead : UK SAR SC Member	RAF SAR Lead : UK SAR SC Member	RAF SAR Lead : UK SAR SC Member	RAF SAR Lead : UK SAR SC Member
Emergency Response Enhancement [NATO Programme Viewpoint:NPV-1]											
Flood Response [NATO Programme Viewpoint:NPV-1]											
SAR-H : MoD/DfT programme [NATO Programme Viewpoint:NPV-1]											
SAR Project : DLOD Project [NATO Programme Viewpoint:NPV-1]											
Training Paramedics to work alongside Fire Rescue Service : Training programme [NATO Programme Viewpoint:NPV-1]											

Related elements

- Capability
- Project
- Activity Part Of Capability
- Activity Part Of Project
- Actual Organization
- Actual Post
- Actual Project
- Actual Project Milestone
- Actual Project Milestone Role
- Increment Milestone
- Milestone Sequence
- Organizational Project Relationship
- Out Of Service Milestone
- Project Milestone
- Project Milestone Role
- Project Ownership
- Project Sequence
- Project Sequence
- Project Status
- Project Theme
- Project Type
- Status Indicators