

Automatic Instantiation wizard

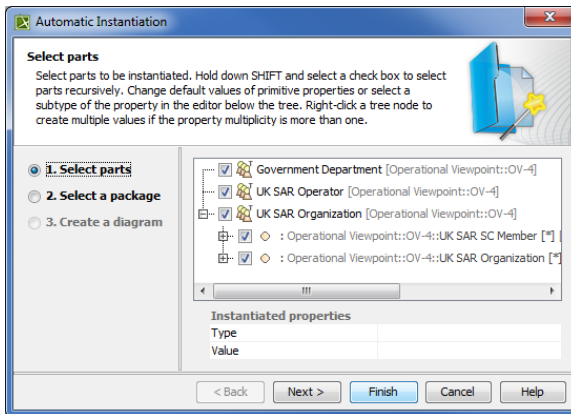
The **Automatic Instantiation** wizard is used to automatically instantiate any typical structure of UPDM architecture.

To open the **Automatic Instantiation** wizard

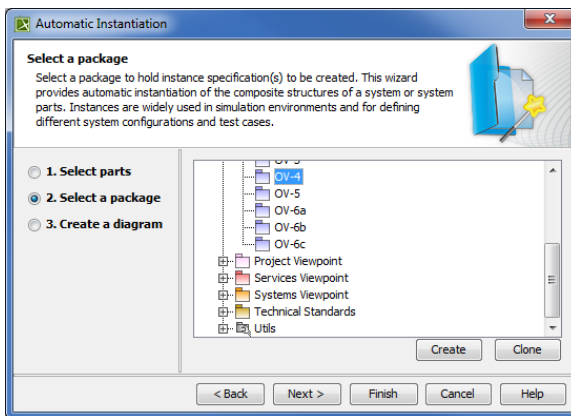
1. Select any number of instantiable UPDM elements and right-click them.
2. On the shortcut menu, choose **Tools > Create Instance**.
The **Automatic Instantiation** wizard opens.

The wizard consists of these three steps:

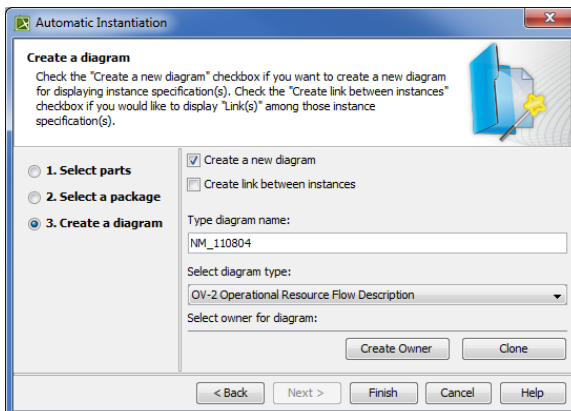
1. Selecting parts.



- In this step, select elements and their internal parts to instantiate.
2. Selecting a package.



- In this step, select, create or clone the package to store the created actual structure.
3. Creating a diagram.



In this step, specify diagram name, select diagram type to visualize the actual structure and the package to store the diagram.

Related procedures

- [Instantiating Structures](#)