

# SvcV-2 Services Resource Flow Description

## Description

A SvcV-2 specifies the Resource Flows between Services and may also list the protocol stacks used in connections.

A SvcV-2 DoDAF-described Model is used to give a precise specification of a connection between Services. This may be an existing connection or a specification of a connection that is to be made for a future connection.

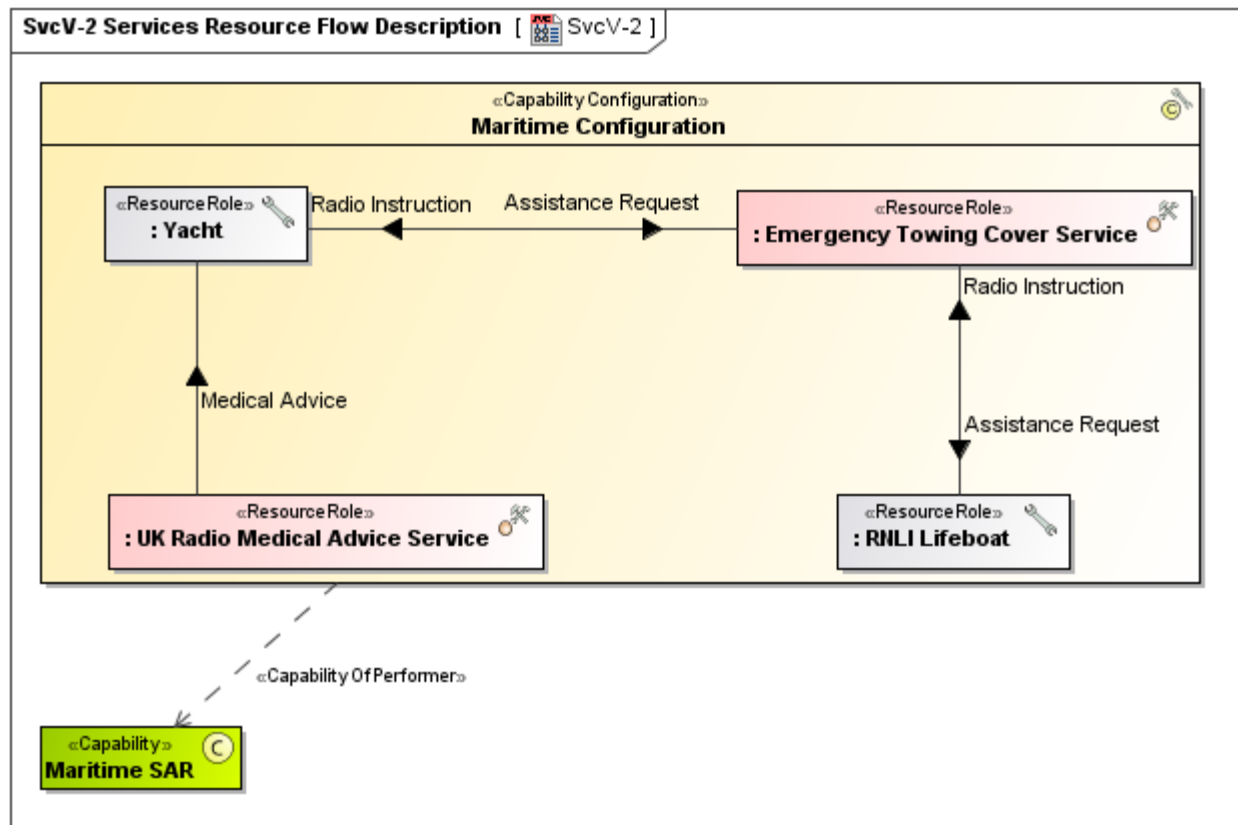
The intended usage of the SvcV-2 includes:

- Resource Flow specification.

## Implementation

SvcV-2 can be represented using:

- A SvcV-2 diagram which is based on the UML Class diagram.
- A SvcV-2 Internal Block diagram which is based on the UML Composite Structure diagram.



Any protocol referred to in a SvcV-2 diagram needs be defined in the [StdV-1 Standards Profile](#).

## Related Pages:

- [Creating SvcV-2 diagram](#)
- [Creating Resource Interaction in SvcV-2 diagram](#)
- [Service Access](#)
- [Capability Of Performer](#)
- [Function](#)
- [Activity Performed By Performer](#)
- [Resource Interaction](#)
- [Protocol](#)
- [Standard](#)
- [Resource Port](#)
- [Service](#)
- [Request](#)
- [Resource Role](#)
- [Resource Operation](#)
- [System](#)
- [Software](#)
- [Capability Configuration](#)

- [Organization Type](#)
- [Person Type](#)