

# S4 Service Functions

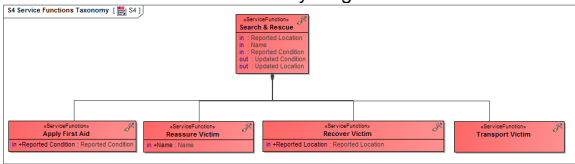
## Description

The S4 Service Functions view defines the behavior of a service in terms of the functions it is expected to perform. S4 is the key behavioral specification for services. Equivalent in nature to L4 - Logical Activities and R4 - Resource Functions, it specifies a set of functions that a service implementation is expected to perform.

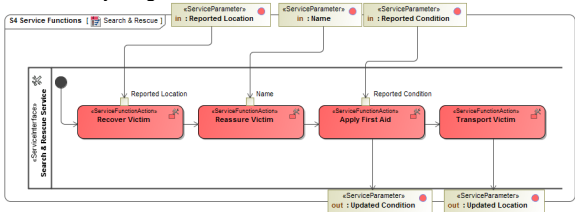
## Implementation

The S4 view can be represented using:

- A S4 Service Functions Taxonomy diagram based on the UML Clas diagram.



- A S4 Service Functions diagram for the Operational Activity flows. This diagram is based on the UML Activity diagram.



- A UML Activity diagram.
- A SysML Activity diagram.
- A SysML Block Definition diagram.
- A UML Class diagram.

## Related procedures

- [Creating S4 Service Functions diagram](#)
- [Creating S4 Service Functions Taxonomy diagram](#)

## Related elements

- Service Function
- Service Operation Action
- Service Function Action
- Function Edge
- Service Operation
- Service Parameter
- Service Interface