

# Automatic Instantiation wizard

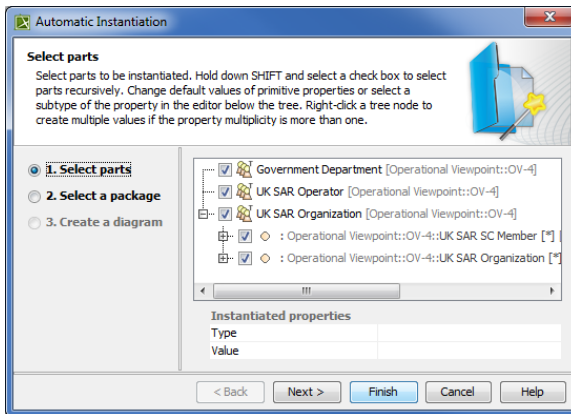
The **Automatic Instantiation** wizard is used to automatically instantiate any typical structure of UPDM architecture.

To open the **Automatic Instantiation** wizard

1. Select any number of instantiable UPDM elements and right-click them.
2. On the shortcut menu, choose **Tools > Create Instance**.  
The **Automatic Instantiation** wizard opens.

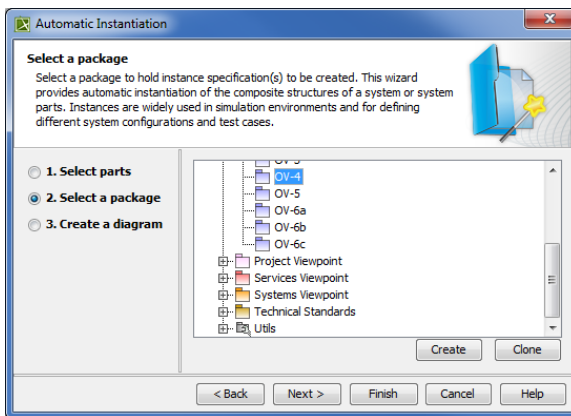
The wizard consists of these three steps:

1. Selecting parts.



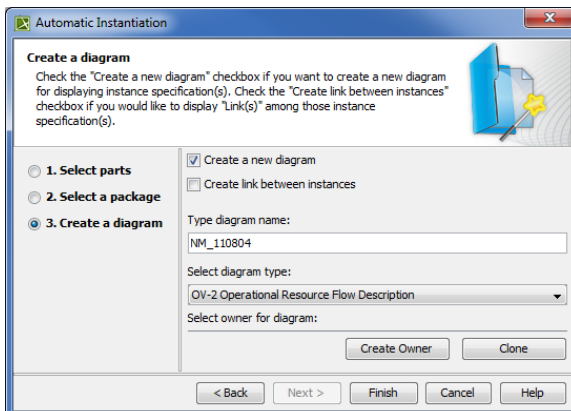
In this step, select elements and their internal parts to instantiate.

2. Selecting a package.



In this step, select, create or clone the package to store the created actual structure.

3. Creating a diagram.



In this step, specify diagram name, select diagram type to visualize the actual structure and the package to store the diagram.

#### Related procedures

- [Instantiating Structures](#)