

Project Status Application Wizard

The **Project Status Application Wizard** is used to apply the DLOD Milestone, DOTMLPF Milestone, or custom Milestone type to the selected element, which can be one of the following:

- Out Of Service Milestone
- Increment Milestone
- Deployed Milestone
- No Longer Used Milestone
- Actual Project Milestone

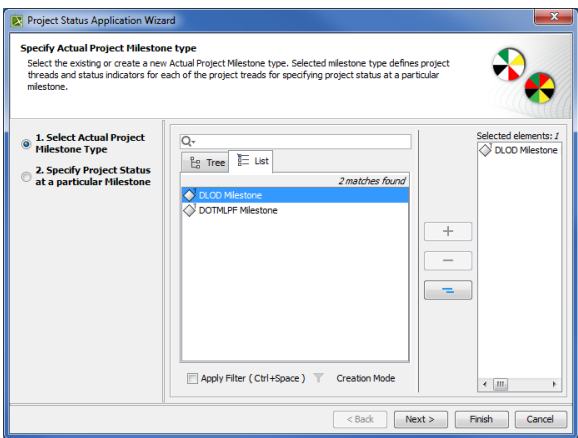
To open the **Project Status Application Wizard**

1. Right-click the Milestone and select **Edit Status**.
The **Project Status Application Wizard** opens.

The wizard consists of two steps:

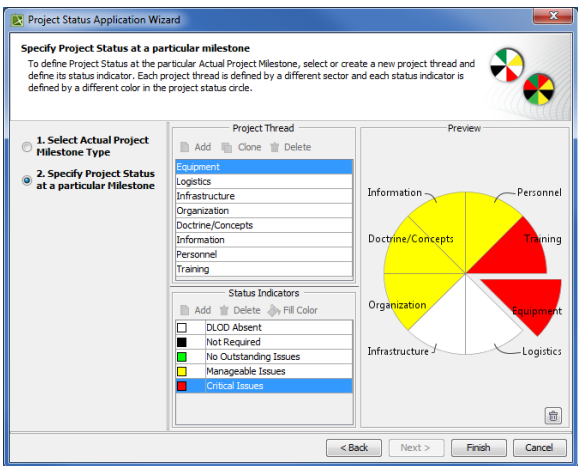
1. Select an Actual Project Milestone Type.

In this step, select DLOD Milestone, DOTMLPF Milestone, or create your own Milestone type.

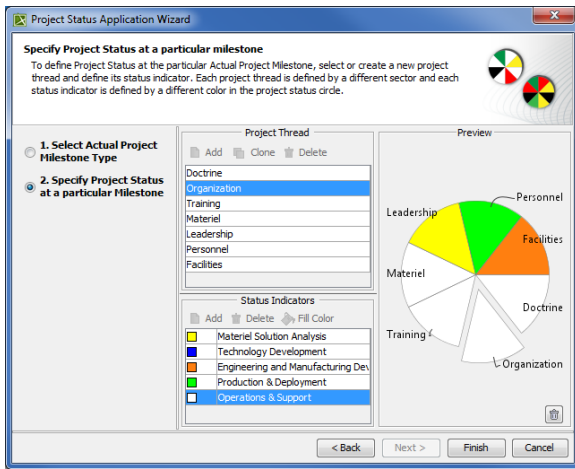


2. Specify Project Status at a particular Milestone.

In this step, specify project threads and status indicators of the selected Actual Project Milestone Type.



	Project threads	Status indicators
DLOD Milestone type	<ul style="list-style-type: none">• Equipment• Logistics• Infrastructure• Organization• Doctrine/Concepts• Information• Personnel• Training	<ul style="list-style-type: none">• DLOD Absent• Not Required• No Outstanding Issues• Manageable Issues• Critical Issues




	Project threads	Status indicators
DOTMLPF Milestone type	<ul style="list-style-type: none"> • Doctrine • Organization • Training • Materiel • Leadership • Personnel • Facilities 	<ul style="list-style-type: none"> • Materiel Solution Analysis • Technology Development • Engineering and Manufacturing Development • Production & Deployment • Operations & Support

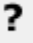
If you selected your own milestone type, you can create your own projects threads and status indicators.

To create project threads and status indicators

1. In the Project Thread area, click the **Add** button.
2. Specify the thread name.
3. In the Status Indicator area, click the **Add** button.
4. Specify the indicator name.
5. Click the **Fill Color** button.
6. In the **Color dialog** choose the color and click **OK**.

 To create a second thread with the same status indicators, select a previously created thread and click the **Clone** button. A new thread with previously defined status indicators is created.

To remove the applied Project Status

1. Click  **Unknown Attachment** in the right bottom corner.

Related procedures

- [Applying Project Status to Lr diagram](#)
- [Applying Project Status in PV-2 diagram](#)
- [Removing Project Status from Lr diagram](#)
- [Removing Project Status from PV-2 diagram](#)