

Displaying information indirectly related to element through derived properties

While working with your models, sometimes in the same diagram or table, you need to see information that is not directly related to an element. You can display that information in the following ways:

- [In the Note](#)
- [In the table](#) (as a new column)

To display the information indirectly related to an element, you need to [create derived properties](#). A property whose values are calculated is called a derived property.

You can [create](#), [edit](#), or [delete](#) derived properties in the:

- Element's Specification window
- Table

You can manage derived properties using the **Expression** dialog.

To create a new derived property

1. Open the **Expression** dialog by doing one of the following:
 - In the selected element's Specification window, click the **Traceability** property group and then click the **Create** button.
 - In the toolbar of an active table, click **Show Columns** and then select **New Derived Property**.
2. In the **Expression** dialog, specify the name and expression for the derived property.
3. Click **OK**.



If you want to create a derived property with the result other than an element, you need to change the derived property type manually.

To edit a derived property

1. Do one of the following:
 - In the selected element's Specification window, click the **Traceability** property group, select a derived property you want to edit, and then click the **Edit** button.
 - In the active table, from the derived property column heading's shortcut menu, select **Edit Expression**.
2. In the **Expression** dialog make changes and click **OK**.

To remove a derived property

1. Do one of the following:
 - In the selected element's Specification window, click the **Traceability** property group, select a derived property you want to edit, and then click the **Delete** button.
 - In the active table, from the derived property column heading's shortcut menu, select **Remove Derived Property**.

To display derived properties on a Note shape

1. Create a Note for the selected element or select an existing one.
2. Do one of the following:
 - Select a Note and click the **Edit Element Properties** smart manipulator. The **Compartment Edit** dialog opens.
 - Right-click the Note shape and select **Edit Compartment**. The **Compartment Edit** dialog opens. Choose **Element Properties** tab.
3. In the **Hidden** list, move properties you want to display on a Note shape to the **Selected** list by doing one of the following:
 - Select one or more properties and click the **>** or **>>** button.
 - Double-click to select properties one by one.
4. Click **OK**.
Selected derived properties are displayed in the Note.

To display derived properties in a table

1. On the table toolbar, click **Show Columns** button and select **Select Columns**.
2. In the opened **Select Columns** dialog, select properties you want to display.
3. Click **OK**, when you are done.

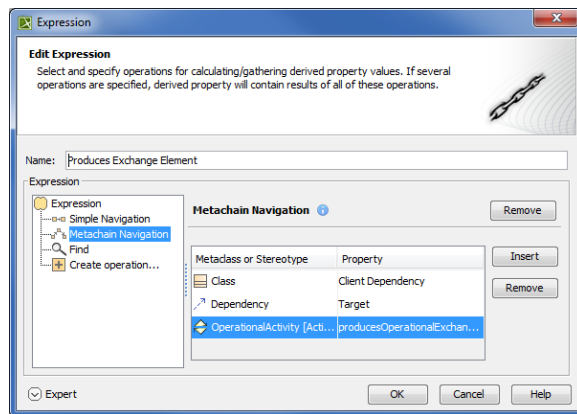
Case Study

Let's say, we need to show *Warning Order* and *Medical Condition* exchange elements that are produced and consumed by the performer *Search Node*. Exchange elements are information indirectly related to the *Search Node* element.

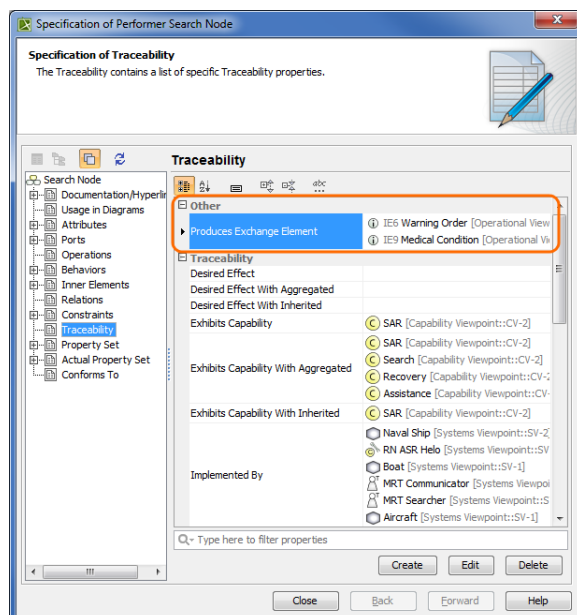
We will analyze the OV-2 diagram from the DoDAF sample project.

First, we will show the exchange elements produced by the *Search Node*.


Let's create the **Produces Exchange Element** derived property for the performer *Search Node*. Open the *Search Node* Specification window and in the **Traceability** property group click the **Create** button. In the **Expression** dialog, select the **Metachain Navigation** property group. Then specify the derived property name and the expression for the meta chain as it is shown in the following figure.



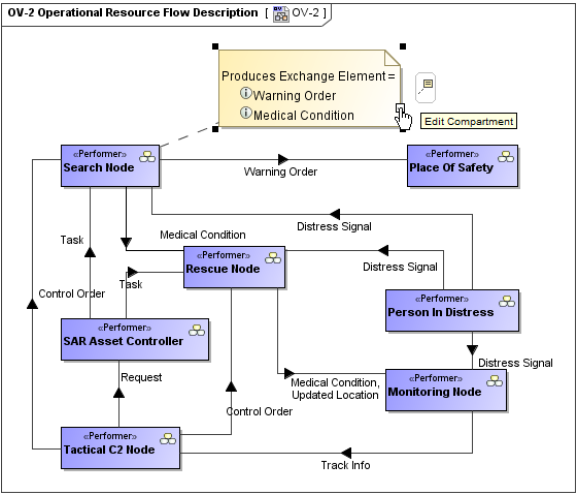
In the following figure, you can see that a new subgroup named **Other** is created in the Performer Specification window. Our created **Produces Exchange Element** derived property is placed under this subgroup. The **Produces Exchange Element** derived property has *Warning Order* and *Medical Condition* exchange elements as its values.



Next, we need to display values of the **Produces Exchange Element** derived property for the *Search Node* performer in the OV-2 diagram.

 A derived property is applicable to an element type, not the specific element. In this particular example, our created derived properties are applicable to all performers, not only to Search Node.

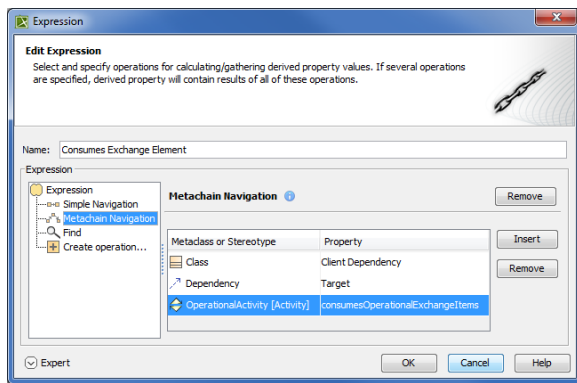
We can use a Note element wherein we can display information indirectly related to the Search Node. Let's create a Note and connect it to the *Search Node* performer. Then click the **Edit Compartment**. In the **Compartment Edit** dialog, select the **Element Properties** tab. From the properties list, select to display the Produces Exchange Element property. After clicking the **OK** button, Warning Order and Medical Condition exchange elements are displayed in the Note.



Now, let's create a generic table wherein we can also display information indirectly related to the *Search Node*, as well as to other performers. For that purpose, we select **Performer** as an **Element Type** and add existing performers to the table. Then we select which information to display as new columns. Previously created **Produces Exchange Element** derived property is also available to add as a new column through the **Show Columns** menu.

Criteria			
Element Type: Performer			
#	Name	Performs Operational Activity	Produces Exchange Element
1	SAR Concept		
2	Person In Distress	Send Distress Signal	Distress Signal
3	Rescue Node	Rescue Provide Medical Assistance	Medical Condition Updated Location
4	Tactical C2 Node	Search & Rescue	
5	Place Of Safety	Transit To SAR Operation	
6	SAR Asset Controller		
7	Search Node	Search Send Warning Order	Warning Order Medical Condition
8	Monitoring Node	Search & Rescue	

Now, let's create a new derived property directly in the generic table. This property will show which exchange elements are consumed by the performer element. We can do that using the same **Expression** dialog and doing the same actions as described previously. In the following figure is the example of the **Consumes Exchange Element** derived property expression.



When the expression is specified, the newly created derived property is displayed as a new column.

Criteria				
Element Type: Performer				
#	Name	Performs Operational Activity	Produces Exchange Element	Consumes Exchange Element
1	SAR Concept			
2	Person In Distress	Send Distress Signal	Distress Signal	
3	Rescue Node	Rescue Provide Medical Assistance	Medical Condition Updated Location	Medical Condition Distress Signal
4	Tactical C2 Node	Search & Rescue		
5	Place Of Safety	Transit To SAR Operation		Warning Order
6	SAR Asset Controller			
7	Search Node	Search Send Warning Order	Warning Order Medical Condition	Distress Signal
8	Monitoring Node	Search & Rescue		