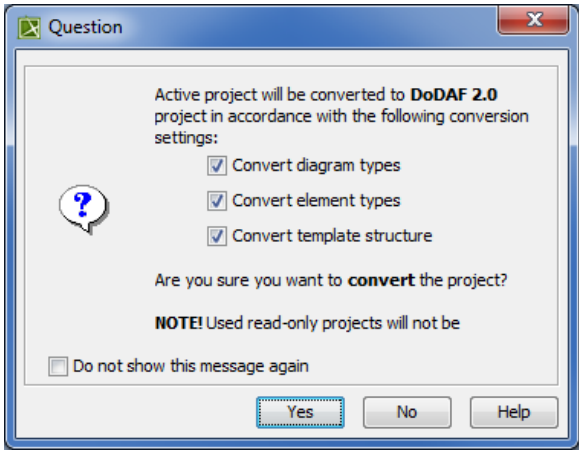


# Question dialog

The **Question** dialog opens when [converting a model to another Enterprise Architecture Framework](#).

The dialog asks whether user wants to convert the model according to specified options or not.



Check box	Description
Convert diagram types	Select to convert all diagram types to corresponding diagram types in the selected framework.
Convert element types	Select to convert all element types to their aliases in the selected framework.
Convert template structure	Select to convert the template structure to the template structure in the selected framework.
Do not show this message again	Select to hide the dialog the next time when performing the model conversion. <div><div><div><div><div><div><span></span></div><div><span>i</span></div></div></div><div><div><span></span></div><div><span>To restore the usage of the <b>Question</b> dialog</span></div></div></div><div><div><div><div><div><span></span></div><div><span>1. Click <b>Options &gt; Environment</b>.</span></div></div></div><div><div><span></span></div><div><span>2. In the <b>Environment Options</b> dialog select the <b>UPDM</b> options group.</span></div></div></div><div><div><span></span></div><div><span>3. In the General properties, set the <b>Display project conversion confirmation question</b> property value to <i>true</i>.</span></div></div></div></div></div>