

# Actual Resources Structure

## Description

An Actual Resources Structure (Ar-Sr) domain describes the analysis, e.g. evaluation of different alternatives, what-if, trade-offs, V&V on the actual resource configurations as it provides a means to capture different solution architectures. The detailed analysis (trade-off, what-if etc.) is carried out using the Resource Constraints view. It illustrates the expected or achieved actual resource configurations required to meet an operational need.

An Actual Resources Structure (Ar-Sr) domain is divided in two forms:

- Typical (e.g., a typical brigade command structure). It shows the possible relationships between organizational resources. The key relationship is composition, i.e., one organizational resource being part of a parent organization. In addition to this, the architect may show the roles each organizational resource has, and the interactions between those roles, i.e., the roles represent the functional aspects of organizational resources. The intended usage of the typical form of the Actual Resources Structure (Ar-Sr) view includes:
  - Organizational analysis.
  - Definition of human roles.
  - Operational analysis.
- Actual (e.g., an organization chart for a department or agency). It shows the structure of a real organization at a particular point in time.

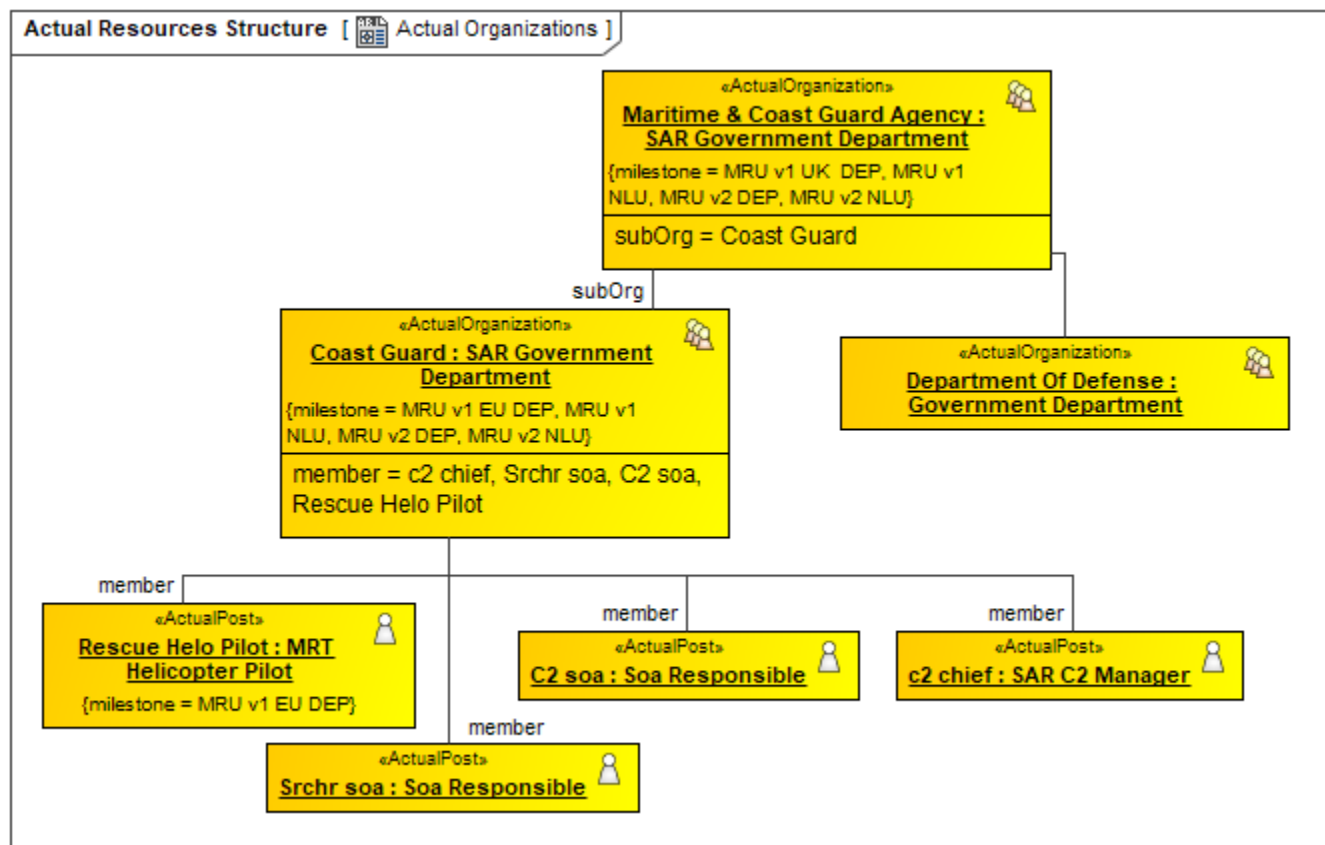
The intended usage of the actual form of the Actual Resources Structure (Ar-Sr) domain includes:

- Identify architecture stakeholders.
- Identify process owners.
- Illustrate current or future organization structures.

## Implementation

Actual Resources Structure (Ar-Sr) domain is represented by [Actual Resources Structure diagram](#).

## Sample



An example of the Actual Resources Structure diagram

## Related elements

- [Actual Organization](#)
- [Actual Organizational Resource](#)
- [Actual Organization Role](#)
- [Actual Person](#)
- [Actual Post](#)

- [Actual Resource](#)
- [Actual Responsibility](#)
- [Actual Responsible Resource](#)
- [Competence](#)
- [Fills Post](#)
- [Organization](#)
- [Organizational Resource](#)
- [Person](#)
- [Post](#)
- [Responsible For](#)

#### **Related procedures**

- [Working with Actual Resources Structure diagram](#)
- [Instantiating structures](#)