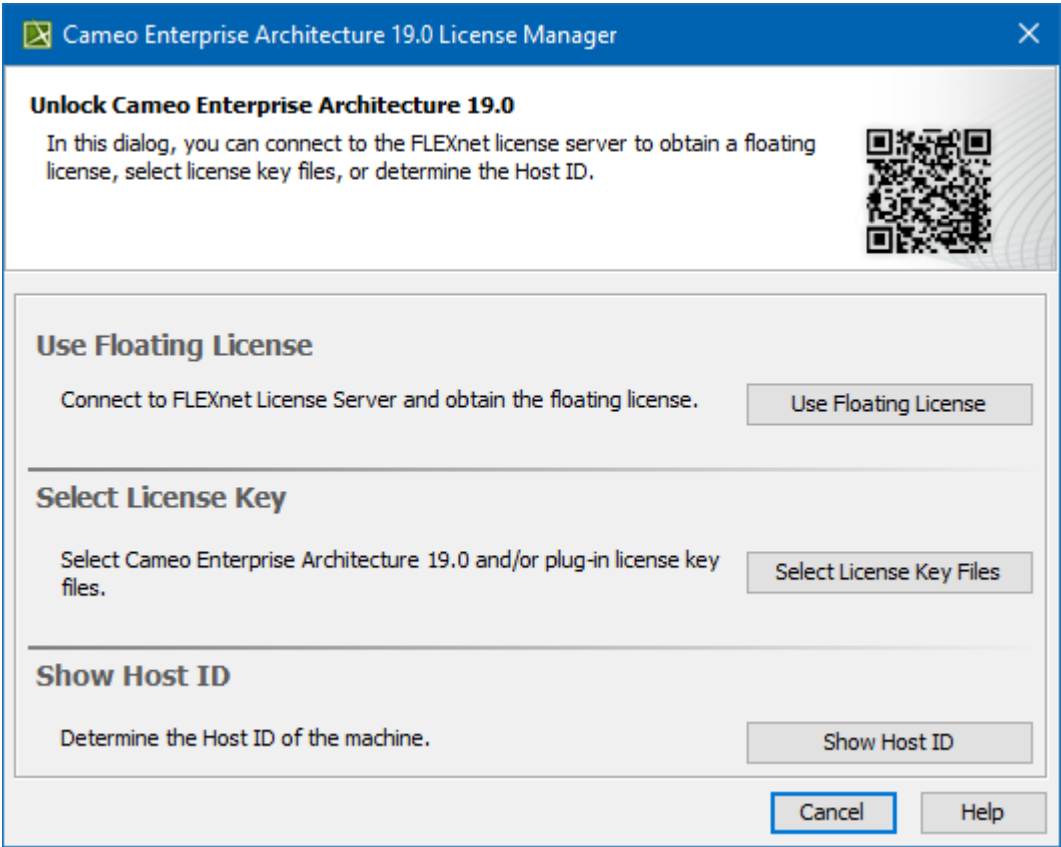


License Manager dialog

There are two ways to view the **License Manager** dialog:

- Starting the modeling tool for the very first time.
- Opening the dialog from the modeling tool's **Help** menu.

When you start the modeling tool for the first time, you will see the following dialog:



The License Manager dialog

In this dialog, you can select one of the license addition options according to the license you have.

| Button name | Description |
|-------------------------|---|
| Use Floating License | If you have the credentials for a Floating license server, click to obtain the Floating license . |
| Select License Key File | If you have a seat, mobile, or academic license, click to add the license key file . |
| Show Host ID | Determine the Host ID of your machine to be able to tie it with the license. |

When you need to change the license key file or obtain a floating license, you can open the **License Manager** dialog from the modeling tool menu (**Help > License Manager**).