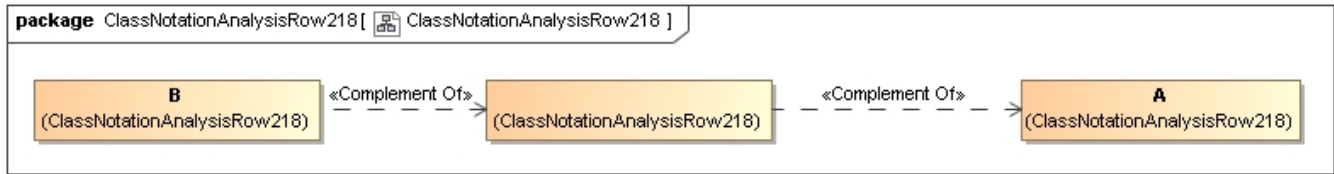


Complement has member Complement



```
Ontology(<http://www.semanticweb.org/wmilnor/ontologies/2018/3/ClassNotationAnalysisRow218>
Import(<http://nomagic.com/ConceptModeler/ConceptModelingSupportLibrary/>)

Declaration(Class(:A))
Declaration(Class(:B))
#####
#   Classes
#####

# Class: :B (:B)

EquivalentClasses(:B ObjectComplementOf(ObjectComplementOf(:A)))

)
```