


Password-protected projects

On this page

- [Setting project password](#)
- [Updating project password](#)
- [Removing project password](#)



- To set, update, and remove project password, you need the **Administer Resources** [permission](#).
- The icon  indicates password-protected projects.

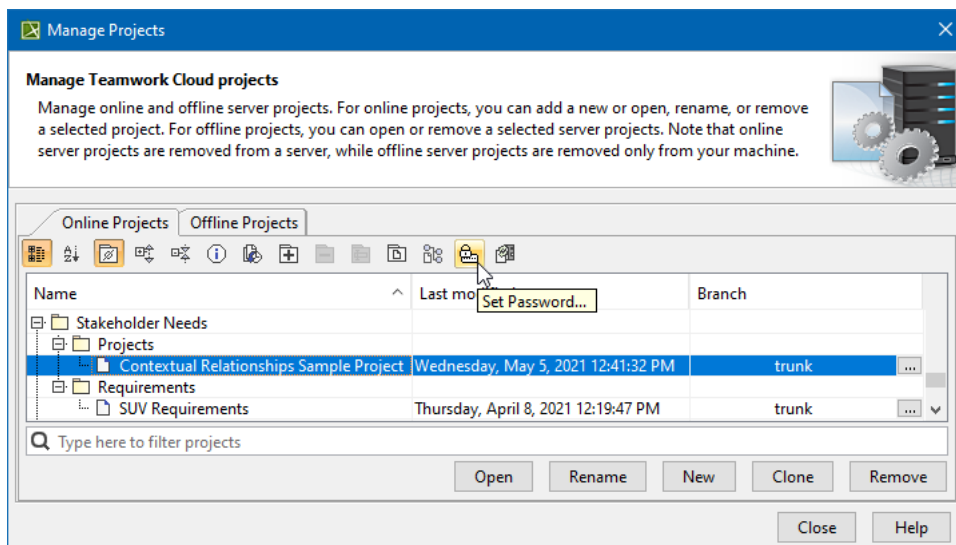
You can protect your server projects with a password. The password covers all project versions, and can be set or removed by a project owner or a user having

You must be logged to a server to set a password for a particular project.

Setting project password

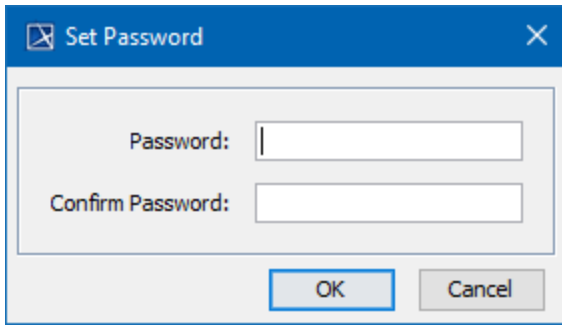
To set a password for a project

1. On the main menu, click **Collaborate > Projects**. The **Manage Projects** dialog opens.
2. In the **Online project** tab, select a project you want to protect by a password and do one of the following:
 - On the dialog toolbar, click the **Set Password** button.
 - Right-click the selected project and click **Set Password**.



You can use the search bar to faster filter used projects by name.


3. The **Set Password** dialog opens.

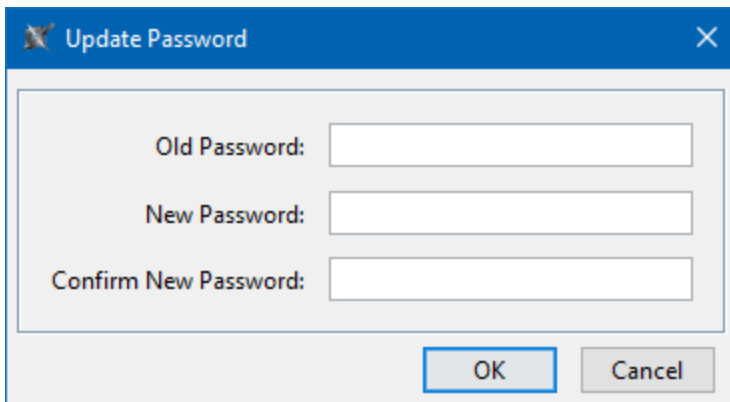
A screenshot of a 'Set Password' dialog box. It has a blue title bar with a close button (X) on the right. The main area is light gray and contains two text input fields. The first field is labeled 'Password:' and the second is labeled 'Confirm Password:'. Below the fields are two buttons: 'OK' and 'Cancel'.

Enter and confirm your password and click **OK**.

Updating project password

To update a password for Teamwork Cloud project


1. On the main menu, click **Collaborate > Projects**. The **Manage Projects** dialog opens.
2. In the **Online project** tab, select a password-protected project (indicated by  icon) and do one of the following:
 - On the dialog toolbar, click the **Set Password** button.
 - Right-click the selected project and click **Set Password**.
3. The **Update Password** dialog opens.

A screenshot of an 'Update Password' dialog box. It has a blue title bar with a close button (X) on the right. The main area is light gray and contains three text input fields. The first field is labeled 'Old Password:', the second is labeled 'New Password:', and the third is labeled 'Confirm New Password:'. Below the fields are two buttons: 'OK' and 'Cancel'.

Enter your old password, then enter and confirm your new password and click **OK**.

Removing project password

To remove a password for Teamwork Cloud project

1. On the main menu, click **Collaborate > Projects**. The **Manage Projects** dialog opens.
2. In the **Online project** tab, select a password-protected project (indicated by  icon) and do one of the following:
 - On the dialog toolbar, click the **Set Password** button.
 - Right-click the selected project and click **Set Password**.
3. The **Update Password** dialog opens. Enter your old password and leave the **New Password** and **Confirm New Password** boxes empty. Click **OK**. Password is removed.