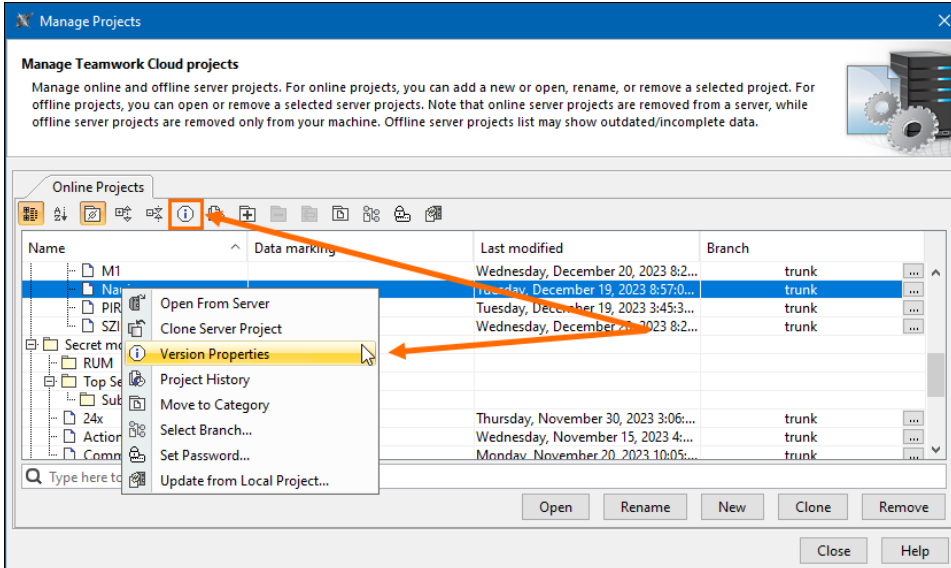


# Viewing Version Properties

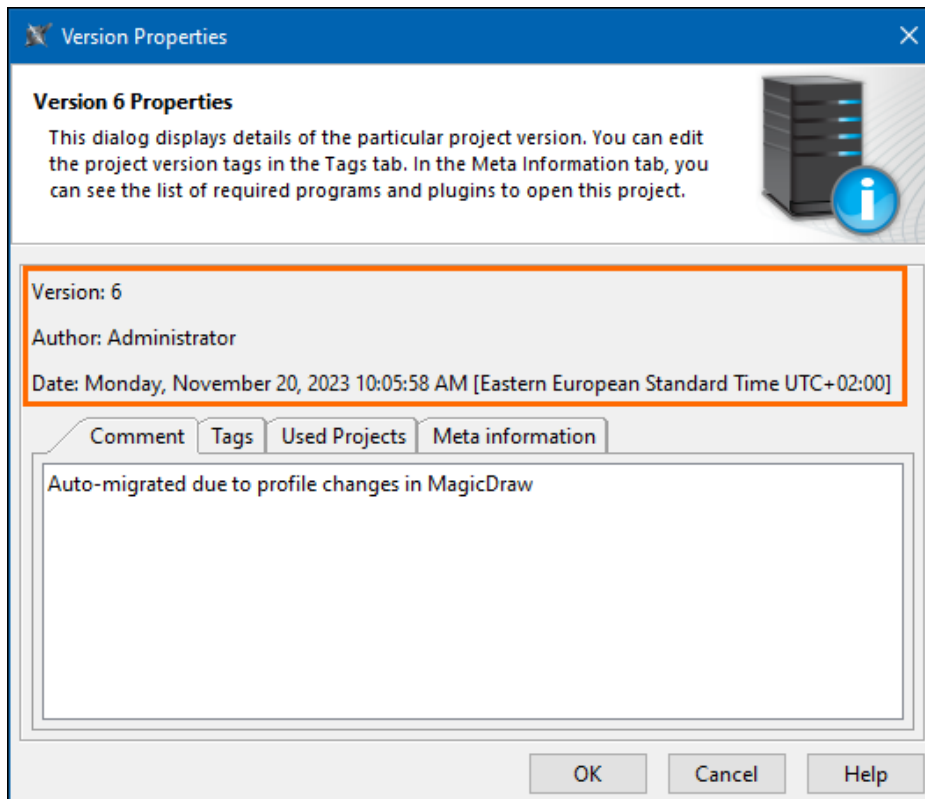
The **Version Properties** dialog shows project version information, for example, comments, tags, modules, and meta information.

To open the Version Properties dialog

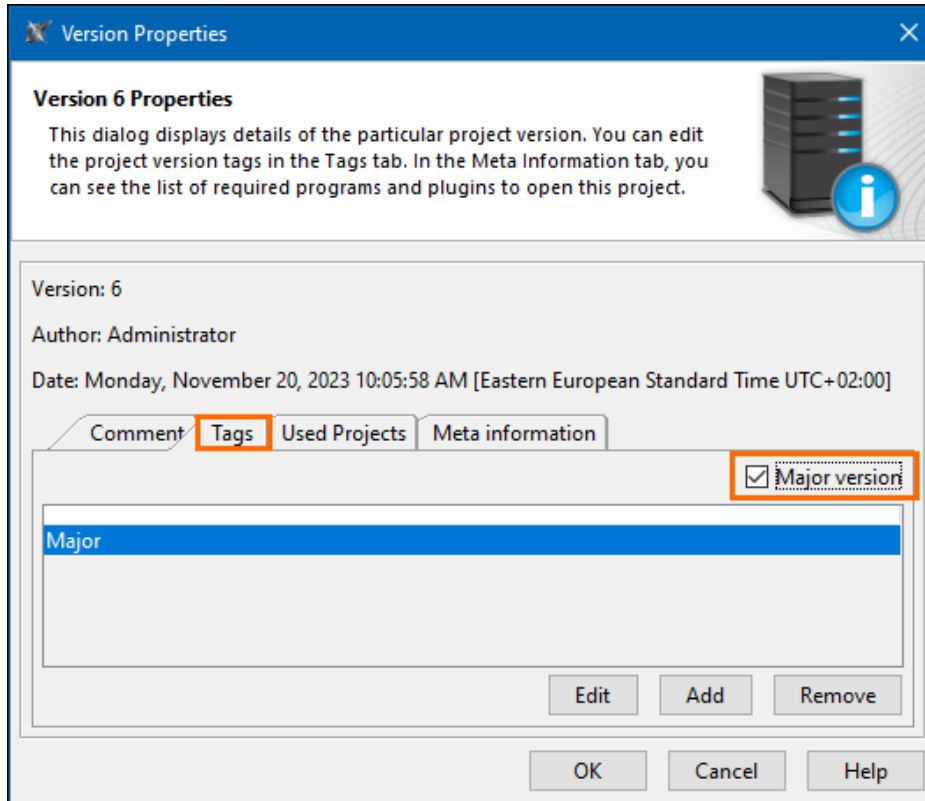
1. From the **Collaborate** menu, select **Open Server Project** or **Projects....**
2. Select a project and click the  button on the **Collaboration** toolbar.  
OR  
Right-click a project and select **Version Properties**.



3. In the Version Properties dialog, you can:
  - View the project author, version number, and creation date with the time zone:



- View project comments in the **Comment** tab.
- Add the *Major* tag in the **Tags** tab to set the selected project as the major version:



**Version Properties**

**Version 6 Properties**

This dialog displays details of the particular project version. You can edit the project version tags in the Tags tab. In the Meta Information tab, you can see the list of required programs and plugins to open this project.

Version: 6  
 Author: Administrator  
 Date: Monday, November 20, 2023 10:05:58 AM [Eastern European Standard Time UTC+02:00]

Comment | **Tags** | Used Projects | Meta information

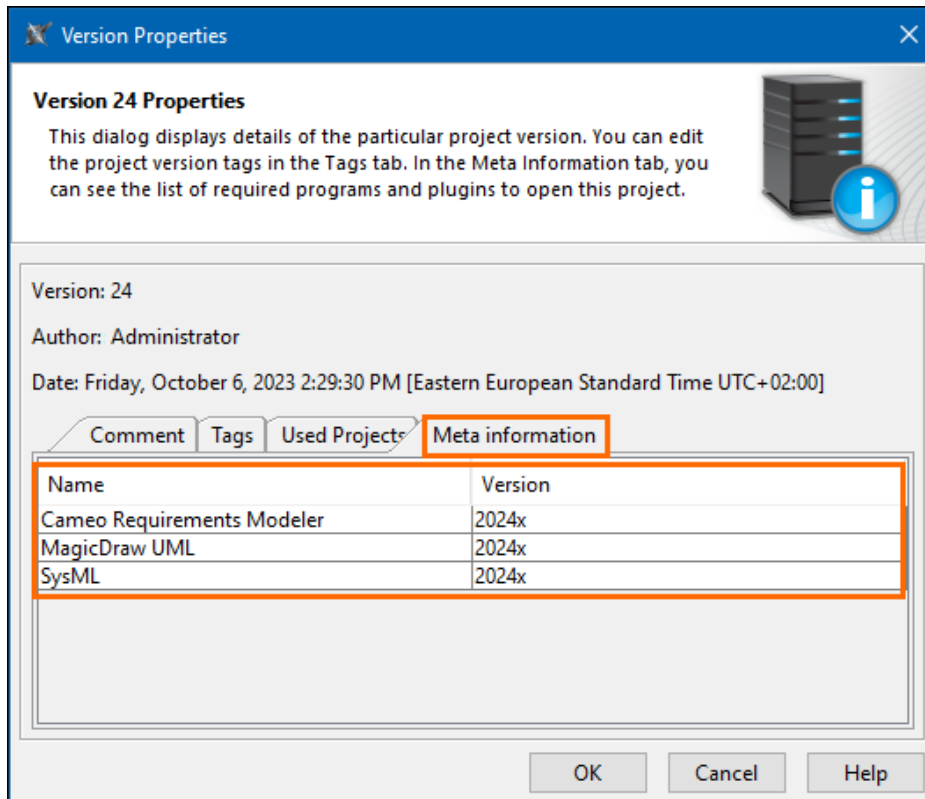
☒ Major version

Major

Edit Add Remove

OK Cancel Help

- View used projects in the **Used Projects** tab.
- Select the **Meta information** tab to see which programs and plugins are required to open the selected project:



**Version Properties**

**Version 24 Properties**

This dialog displays details of the particular project version. You can edit the project version tags in the Tags tab. In the Meta Information tab, you can see the list of required programs and plugins to open this project.

Version: 24  
 Author: Administrator  
 Date: Friday, October 6, 2023 2:29:30 PM [Eastern European Standard Time UTC+02:00]

Comment | Tags | Used Projects | **Meta information**

Name	Version
Cameo Requirements Modeler	2024x
MagicDraw UML	2024x
SysML	2024x

OK Cancel Help