




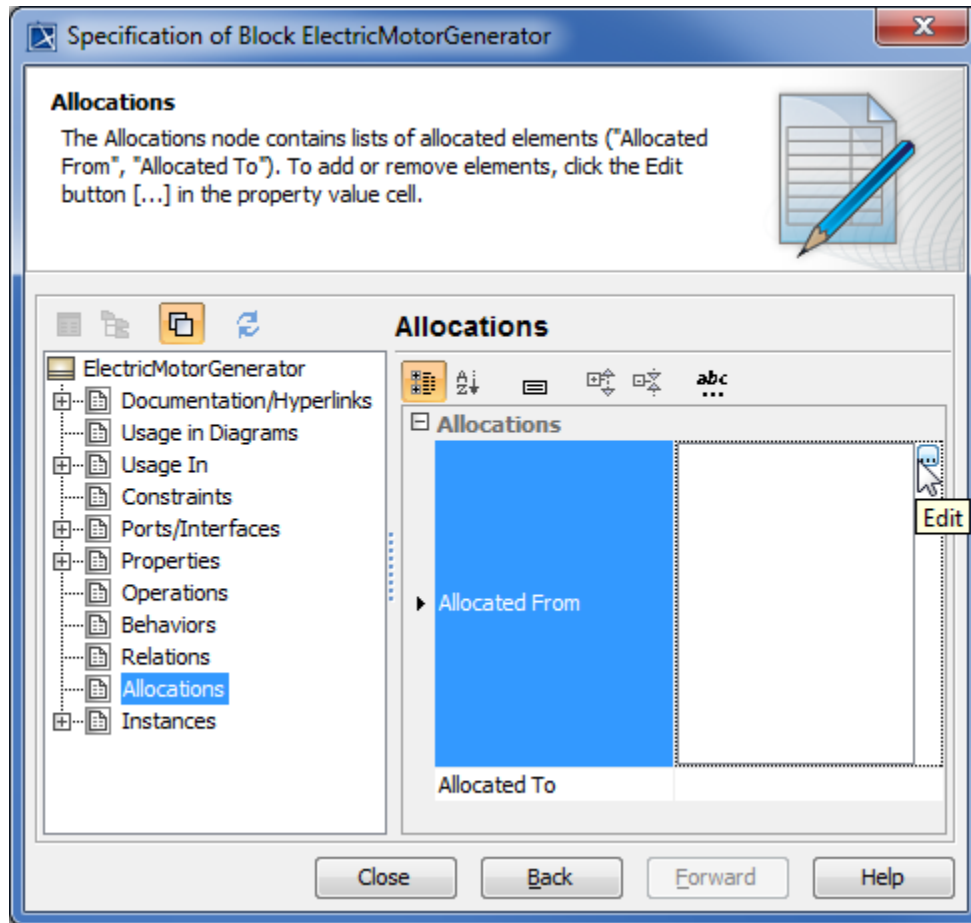
Managing derived SysML properties and tags

All derived SysML properties and tags are collected in the **Allocations** property group.

To add or remove an element

1. Click  on the left.
2. Select an element from the **Select Elements** dialog.
3. Click  to add element /  to remove element.
4. Click **OK**.

The corresponding relationships are created and collected in the **Relations** property group.



Column name	Description
Allocated From	Elements that are allocated to this element.
Allocated To	Elements the selected element is allocated to.